



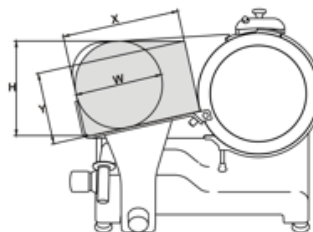
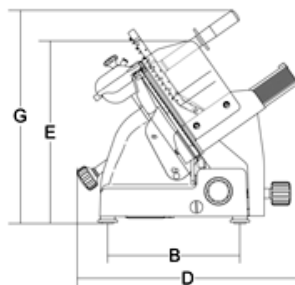
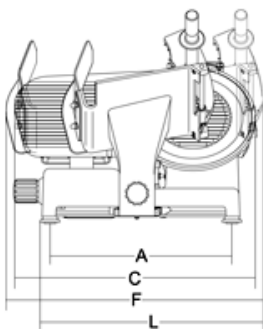
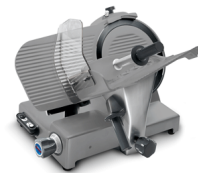
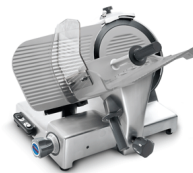
solo per professionisti

Sirman Spa
 Viale dell'Industria 9/11
 35010 PIEVE DI CURTAROLO (PD), Italy
 Tel./Fax. +39 049 9698666 / +39 049 9698688
 email: info@sirman.com



Sirman 切片机, model Palladio 350 :

- 圆形设计, 无可见棱角和螺钉;
- 磨削镀铬的滑动轴;
- 抛光铸铁的滑动轴套;
- 料斗端部带有硫化橡胶挡板;
- 厚度调节板支撑盖可拆卸;
- 销钉式接合不锈钢切片挡板;
- 不锈钢螺钉和零部件;
- 密封的皮带轮;
- 刀片和马达之间间距为49.5毫米;
- 底部保护罩;
- 带有底部保护装置的磨刀器;
- 塑料手柄;
- 橡胶支脚;
- 不提供维护工具箱。



模型	PALLADIO 350
∅ 刀片	mm 350 - inch. 14
电机	watt 370 - Hp 0,50
切削厚度	mm 23
滑车行程	mm 310
盘子	mm 305x270
A	mm 465
B	mm 340
C	mm 660
D	mm 575
E	mm 455
F	mm 710
G	mm 530
L	mm 590
X	mm 270
Y	mm 225
H	mm 275
W	mm 250
净重	kg 37
包装尺寸	mm 760x640x700

毛重	kg 46
HS-CODE	84385000