



## **Ice Machine Parts List for Series Q600 Models**

**QR0600A**

**QD0692N**

**QR0601W**

**QY0604A**

**QR0690N**

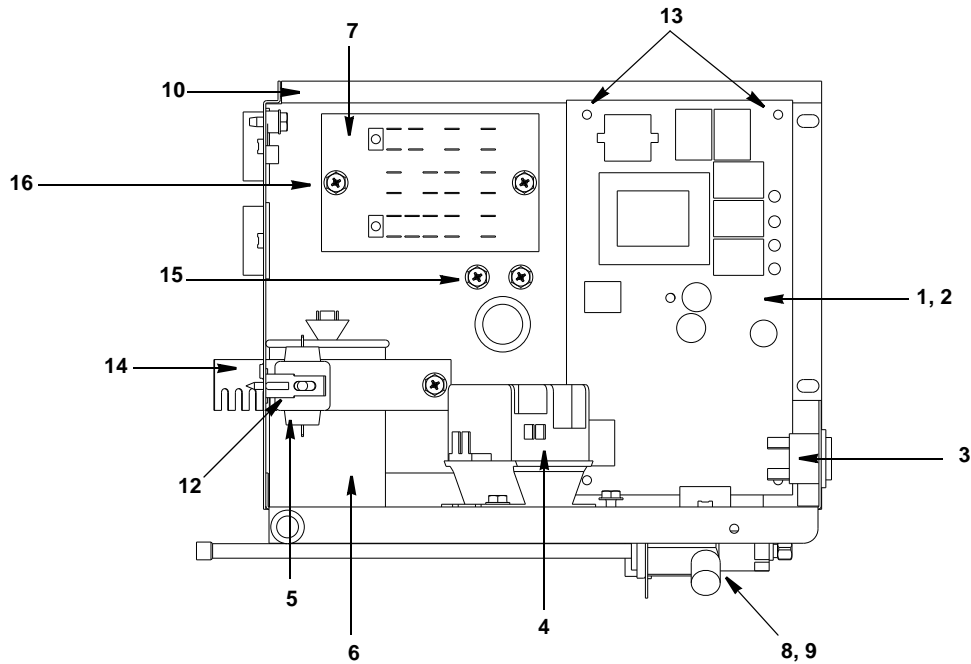
**QY0605W**

**QD0602A**

**QY0694N**

**QD0603W**

## Q600 CONTROL BOX



pt1176

### DESCRIPTION

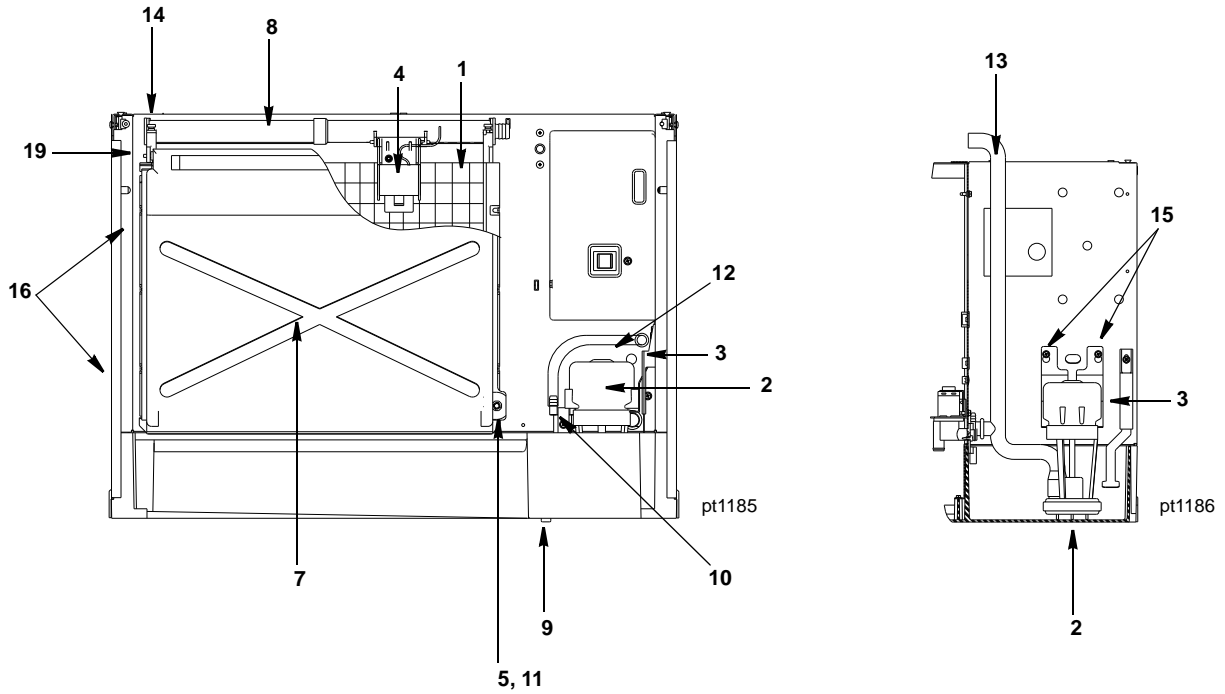
DESCRIPTION	PART NO.
1 Control Board (for use with all voltages) . . . . .	† 7627823
2 7 Amp Fuse – Mounted on Control Board . . . . .	2511003
3 <b>Toggle Switch</b> Only . . . . .	2301343
a. Toggle Switch with Wiring Harness Attached . . . . .	2032173
4 Contactor (208-230V/60 Hz/1 Ph or 230V/50 Hz/1 Ph) . . . . .	† 2006599
5 P.T.C.R. Compressor Starter . . . . .	8504993
6 <b>Compressor Run Capacitor</b>	
a. 60 Hz for RS86CIEPFV251 . . . . .	2010143
b. 60 Hz for RS86CIEPFV218 . . . . .	8503933
c. 60 Hz for CS08KQEPFV255 . . . . .	8503933
d. 50 Hz . . . . .	8503933
7 <b>Terminal Board with Wire Harness Attached</b>	
a. 230V/60 Hz/1 Ph . . . . .	2032293
b. 50 Hz/1 Ph . . . . .	No Longer Available
8 Refrigeration Service Valve Assembly . . . . .	8373263

### Miscellaneous – Brackets, Screws, etc.

9 Locknut Used to Mount Refrigeration Service Valves . . . . .	† 5475039
10 Control Box . . . . .	6025593
11 Control Box Cover (Not shown) . . . . .	† 7628523
12 P.T.C.R. Compressor Starter Mounting Bracket . . . . .	8505013
13 Control Board Mounting Supports . . . . .	4302253
14 Capacitor Mounting Strap . . . . .	6024951
15 Screw, #10-24 x 0.50 Ground . . . . .	† 5202169
16 Screw, #10-24 x 0.50 . . . . .	† 5202069

† Refer to Cross Reference Guide

## Q600 EVAPORATOR COMPARTMENT



### DESCRIPTION

#### 1 Evaporator Assembly

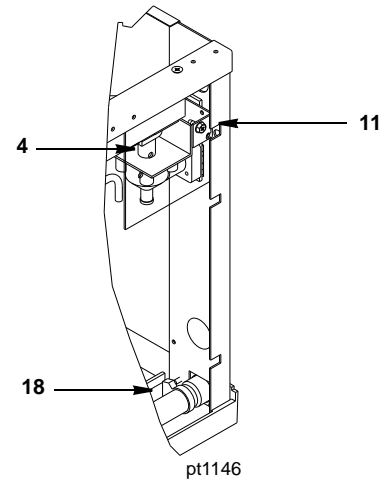
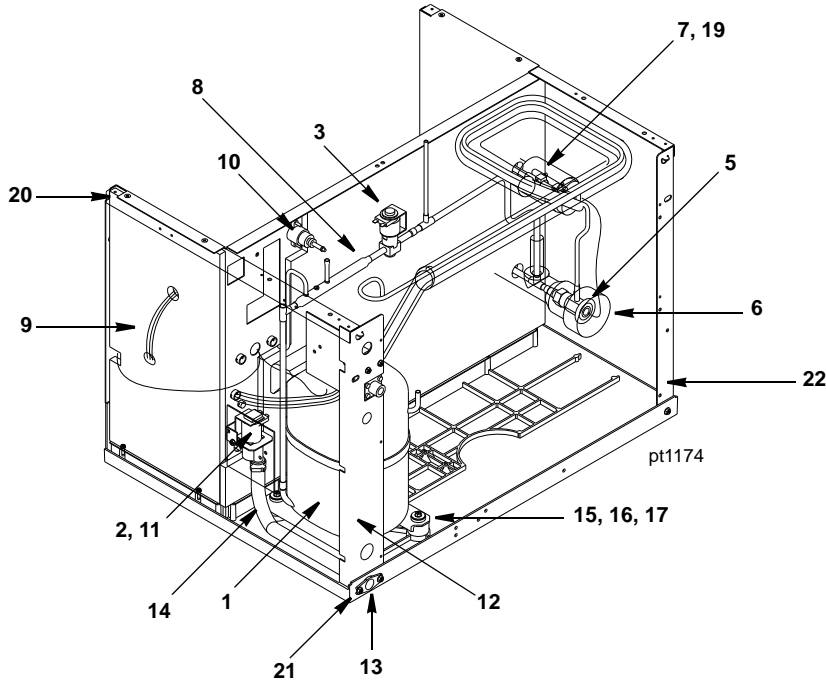
	PART NO.
a. Regular Cube . . . . .	† 7625129
b. Dice Cube . . . . .	† 7625119
c. Half Dice Cube . . . . .	† 7625109
2 Water Pump (208-230V/60 Hz or 230V/50 Hz) . . . . .	† 7626013
3 Water Level Probe . . . . .	2511293
4 Ice Thickness Control Probe . . . . .	† 7627813
5 Magnetic Bin Switch (Mounted to Evaporator). . . . .	† 2301483
6 Water Flow Clamp – Use on Regular Cube Evap. Only (Not shown) . . . . .	7620543
7 Water Curtain . . . . .	† 4304643
8 Water Distribution Tube . . . . .	† 7624983
9 Water Trough Drain Plug . . . . .	† 4300629
10 Water Inlet Flow Tube . . . . .	4303883

#### Miscellaneous – Brackets, Screws, etc.

11 Water Curtain Magnet with Attachment Clip . . . . .	† 7628023
12 Water Inlet Tubing 0.375 ID . . . . .	4421113
13 Tubing (Water Pump Out) . . . . .	4421093
14 Screw, #8-32 x 0.63 Nylon Water Distribution Tube Mounting. . . . .	† 5000013
15 Screw, #10-24 x 0.50 . . . . .	† 5202069
16 Screw, #10-24 x 0.750 Used to Mount Evaporator . . . . .	† 5202189
17 Base and Water Trough Repair Kit . . . . .	† 7628063
18 Evaporator Top Molding and Gasket Assembly . . . . .	7626213
19 Water Curtain Pin Assembly . . . . .	7627763

† Refer to Cross Reference Guide

## Q600 REFRIGERATION COMPARTMENT – COMMON PARTS

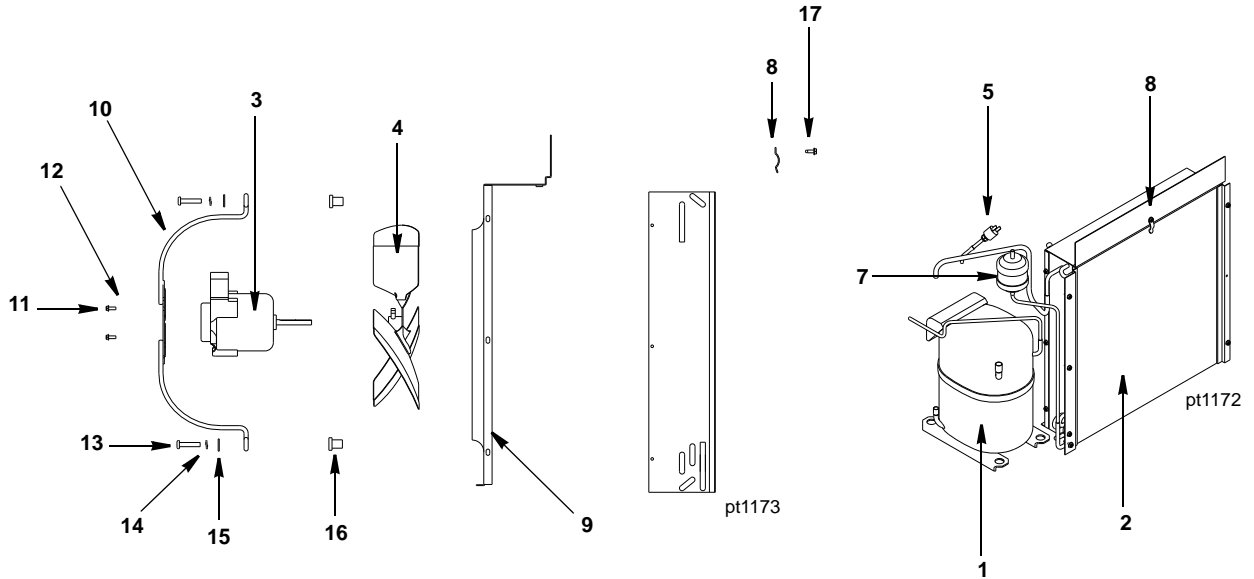


### DESCRIPTION

		PART NO.
1	<b>Compressor</b>	
	a. 208-230V 60 Hz/1 Ph .....	7600923
	b. 230V/50 Hz/1 Ph .....	7600913
2	<b>Water Dump Valve</b>	
	a. Dump Valve, 208-230V/50-60 Hz .....	000001768
	b. Dump Valve Rebuild Kit .....	No Longer Available
3	<b>Hot Gas Valve</b>	
	a. Hot Gas Valve Including 208-230V/50-60 Hz Electrical Coil (Danfoss) .....	† 7630101
	b. Hot Gas Valve 208-230V/50-60 Hz Coil Only Danfoss .....	000005157
	c. Hot Gas Valve 208-230V/50-60 Hz Coil Only Alco .....	† 2404483
4	<b>Water Inlet Valve</b>	
	a. Water Inlet Valve Including 208-230V/50-60 Hz Coil .....	000007966
5	Expansion Valve .....	† 7600203
6	Expansion Valve Body Insulation Boot	
	a. Alco .....	4007213
	b. Danfoss .....	4000363
7	Expansion Valve Bulb Insulation Boot .....	4007203
8	Manifold Strainer 3 Hole (in front of hot gas valve) .....	8310153
	a. Manifold Strainer 4 Hole (in front of hot gas valve) .....	8250963
9	Water Pump Electrical Wire Lead .....	† 2078103
10	High Pressure Cut-out (Manual Reset) .....	† 2355369
10	High Pressure Cut-out (Auto Reset) .....	† 2001243
<b>Miscellaneous – Brackets, Screws, etc.</b>		
11	Dump Valve/Water Inlet Valve Mounting Bracket .....	6023541
12	Right Corner Post Weldment .....	6019501
13	Water Drain Female Wing Adapter .....	8706083
14	Water Drain Vinyl Tubing, 0.625 ID .....	† 4420383
15	Compressor Mounting Rubber Grommet .....	† 8503069
16	Compressor Mounting Washer .....	† 5573419
17	Compressor Mounting Screw .....	† 5012309
18	Clamp, Water Drain .....	† 5650709
19	Clamp, Expansion Valve Bulb .....	† 5650529
20	Screw, #10-24 x 0.50 .....	† 5202099
21	Screw, #10-24 x 0.75 .....	† 5202189
22	Left Corner Post Weldment .....	6019511
23	Terminal Block (50 Hz only) .....	2006143

† Refer to Cross Reference Guide

## Q600 REFRIGERATION COMPARTMENT – AIR-COOLED



### DESCRIPTION

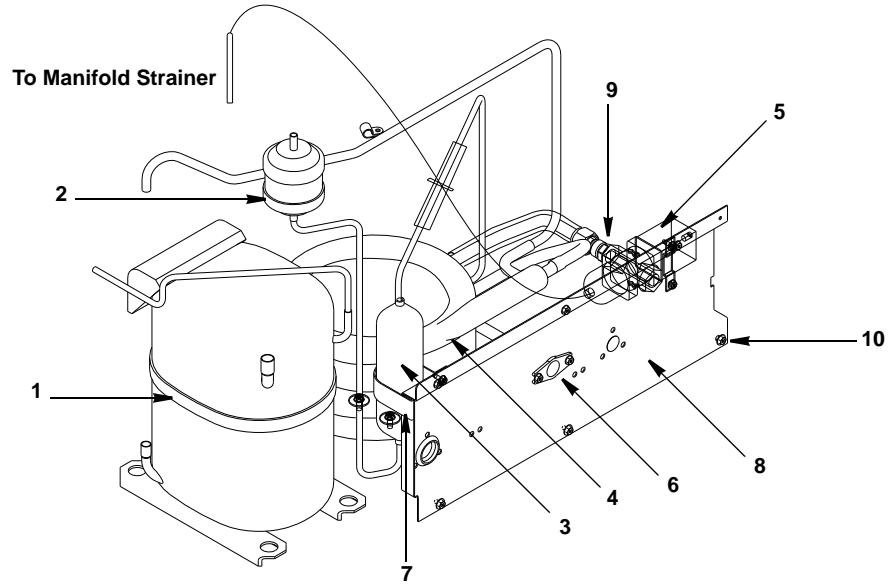
	<b>PART NO.</b>
1 Compressor (Refer to COMMON PARTS Page) . . . . .	Page 4
2 Air Condenser . . . . .	8851253
3 Fan Motor (208-230V/60 Hz or 230V/50 Hz) . . . . .	† 2412939
4 Fan Blade . . . . .	2416173
5 Fan Cycling Control . . . . .	† 2001263
6 Air Filter (Not shown) . . . . .	4040183
7 Drier . . . . .	† 8930259

### Miscellaneous – Brackets, Screws, etc.

8 Air Filter Clip . . . . .	† 5650699
9 Fan Shroud . . . . .	6061631
10 Fan Motor Mounting Bracket . . . . .	3406623
11 Fan Motor Mounting Screw . . . . .	† 5025599
12 Fan Motor Mounting Flatwasher . . . . .	† 5504269
13 Fan Bracket Mounting Screw . . . . .	† 5033589
14 Fan Bracket Mounting Lockwasher . . . . .	† 5545109
15 Fan Bracket Mounting Flatwasher . . . . .	† 5573059
16 Fan Bracket Mounting Rubber Wellnut . . . . .	† 5429559
17 Screw, #10-24 x 0.75 . . . . .	† 5202189

† Refer to Cross Reference Guide

# Q600 REFRIGERATION COMPARTMENT – WATER-COOLED



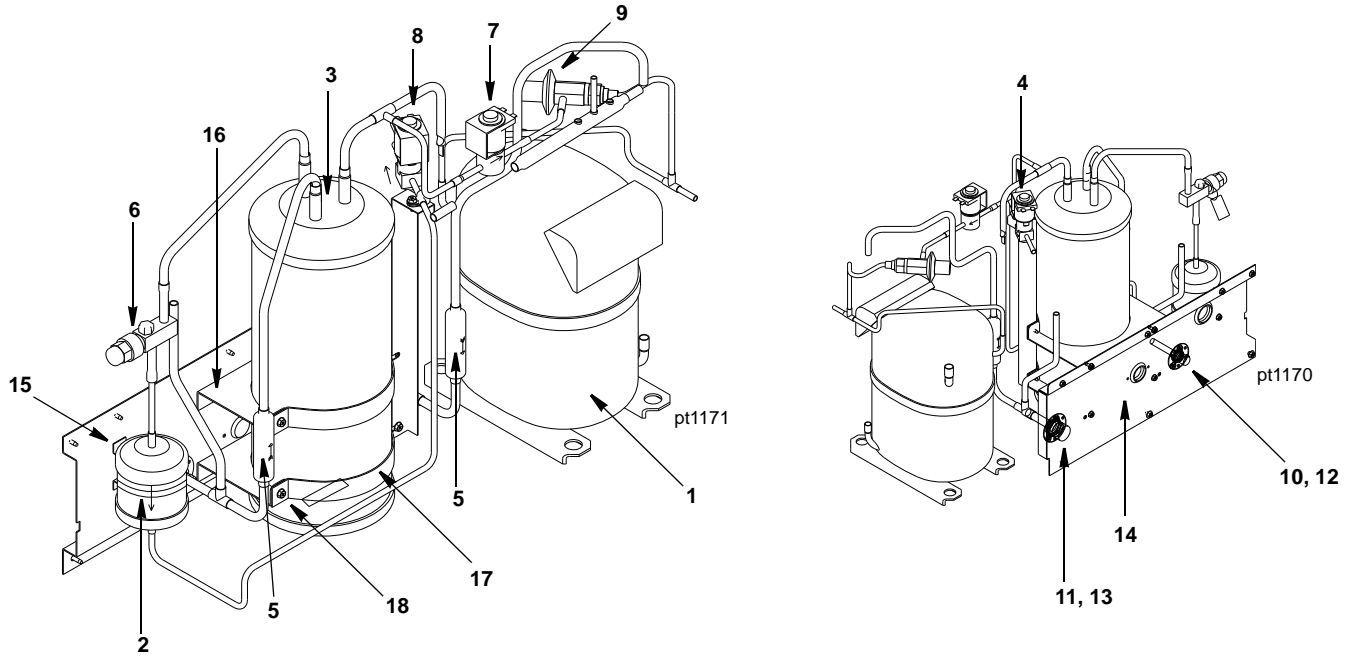
pt1180

## DESCRIPTION

	<b>DESCRIPTION</b>	<b>PART NO.</b>
1	Compressor (Refer to COMMON PARTS Page) .....	Page 4
2	Drier .....	† 8930259
3	Receiver .....	00008892
4	Water-cooled Condenser .....	† 8865333
5	Water Regulating Valve .....	† 8372069
6	Water Drain Female Wing Adapter .....	8706083
<b>Miscellaneous – Brackets, Screws, etc.</b>		
7	Receiver Strap .....	6000541
8	Back Panel .....	6019061
9	Water Coupling .....	8332033
10	Screw, #10-24 x 0.75 .....	† 5202189

† Refer to Cross Reference Guide

## Q600 REFRIGERATION COMPARTMENT – REMOTE



### DESCRIPTION

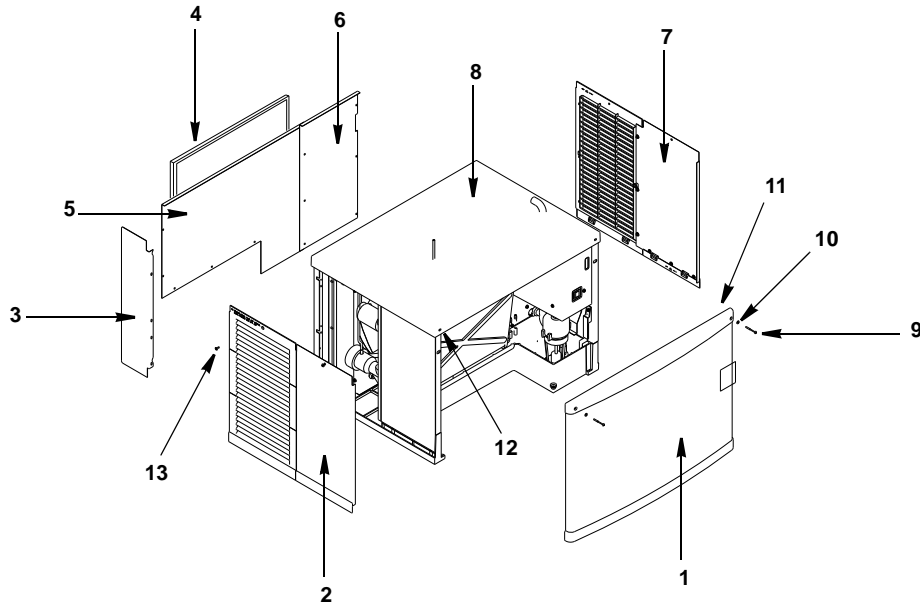
DESCRIPTION	PART NO.
1 Compressor (Refer to COMMON PARTS) . . . . .	Page 4
2 Drier . . . . .	† 8930279
3 Receiver . . . . .	† 7629573
4 Safety Soft Plug . . . . .	No Longer Available
5 Magni-Check Valve . . . . .	† 8373149
6 Refrigeration Service Valve . . . . .	† 8373169
a. Cap for Refrigeration Service Valve . . . . .	5650753
7 <b>Harvest Pressure Regulating Solenoid (HPR) Valve</b>	
a. HPR Valve Including 208-230V/50-60 Hz Electrical Coil (Danfoss) . . . . .	† 7630061
b. HPR Valve 208-230V/50-60 Hz Coil Only Danfoss . . . . .	000005157
c. HPR Valve 208-230V/50-60 Hz Coil Only Alco . . . . .	† 2404483
8 <b>Liquid Line Solenoid (LLS) Valve</b>	
a. LLS Valve Including 208-230V/50-60 Hz Electrical Coil (Danfoss) . . . . .	† 7630081
b. LLS Valve 208-230V/50-60 Hz Coil Only Danfoss . . . . .	000005157
c. LLS Valve 208-230V/50-60 Hz Coil Only Alco . . . . .	† 2404483
9 Harvest Pressure Regulating Valve (HPR) . . . . .	† 8367793
10 Coupling – Male, 5/8-18 . . . . .	† 8360343
11 Coupling – Male, 1-1/16-12 . . . . .	† 8360353

### Miscellaneous – Brackets, Screws, etc.

12 Coupling Mounting Flange (for 5/8-18) . . . . .	8360053
13 Coupling Mounting Flange (for 1-1/16-12) . . . . .	8360063
14 Back Panel . . . . .	6019061
15 Drier Support Bracket . . . . .	6017371
16 Receiver Mounting Bracket . . . . .	6000561
17 Receiver Mounting Strap . . . . .	6307214
18 Screw, #10-24 x 0.50 . . . . .	† 5202069

† Refer to Cross Reference Guide

## Q600 PANELS



pt1177

### DESCRIPTION

		<b>PART NO.</b>
1	Front Panel Assembly .....	7628533
2	Left Side Panel .....	† 7628303
3	Air Baffle .....	6023631
4	Air Filter .....	4040183
5	Back Panel, Water or Remote .....	6019981
6	Back Panel, Air .....	6021581
7	Right Side Panel .....	† 7628313
8	Top Cover .....	4303313

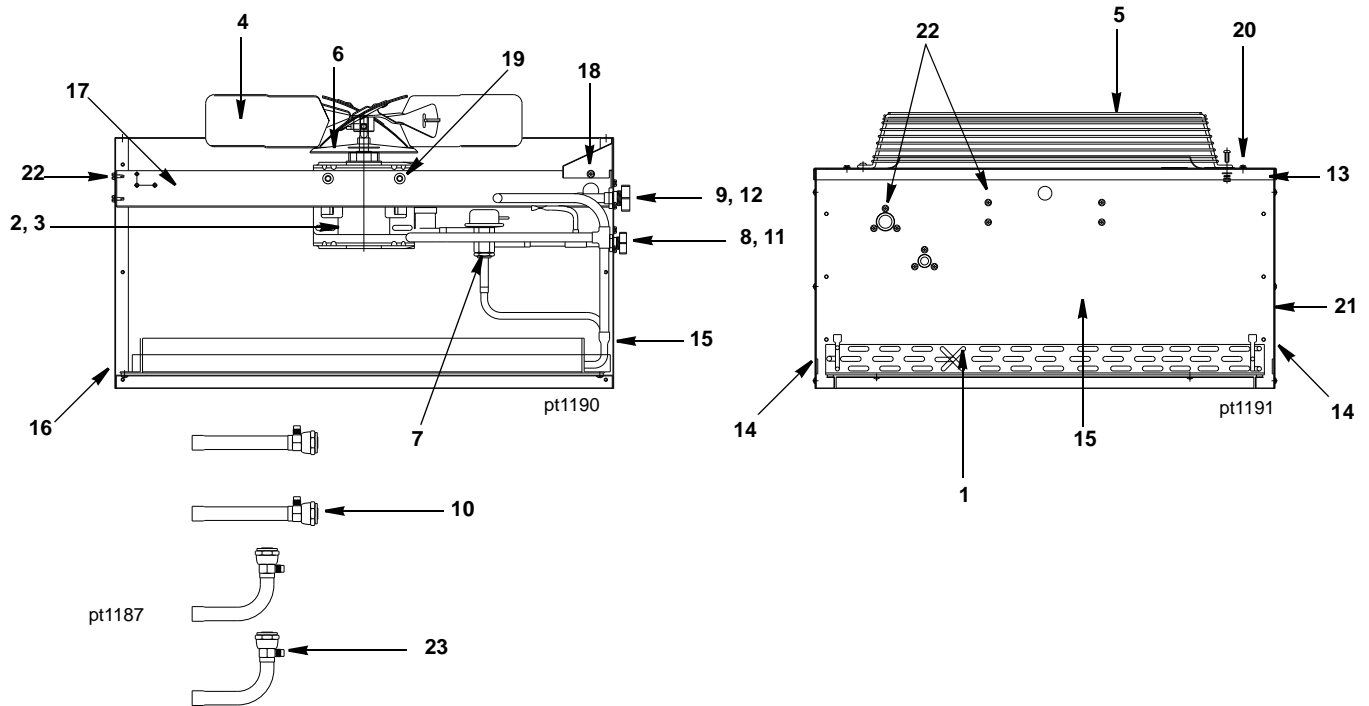
### Miscellaneous – Brackets, Screws, etc.

9	Front Cover Screw .....	† 5119019
10	Front Cover Washer .....	† 5573389
11	Front Cover Screw Retainer .....	† 5648279
12	Speed Nut Assembly to Mount Front Cover .....	† 5473039
13	Screw, #10-24 x 0.50 Flat .....	† 5202099
14	Extruded Tape (Not Shown) .....	† 9202509
15	Front Top Support (Not Shown) .....	† 6580419

**NOTE:** Items 9, 10, 11 and 12 can be ordered as assembly 7628983.



## JC0895 REMOTE CONDENSER (USED WITH Q600 AND Q800 REMOTE ICE MACHINES)



### DESCRIPTION

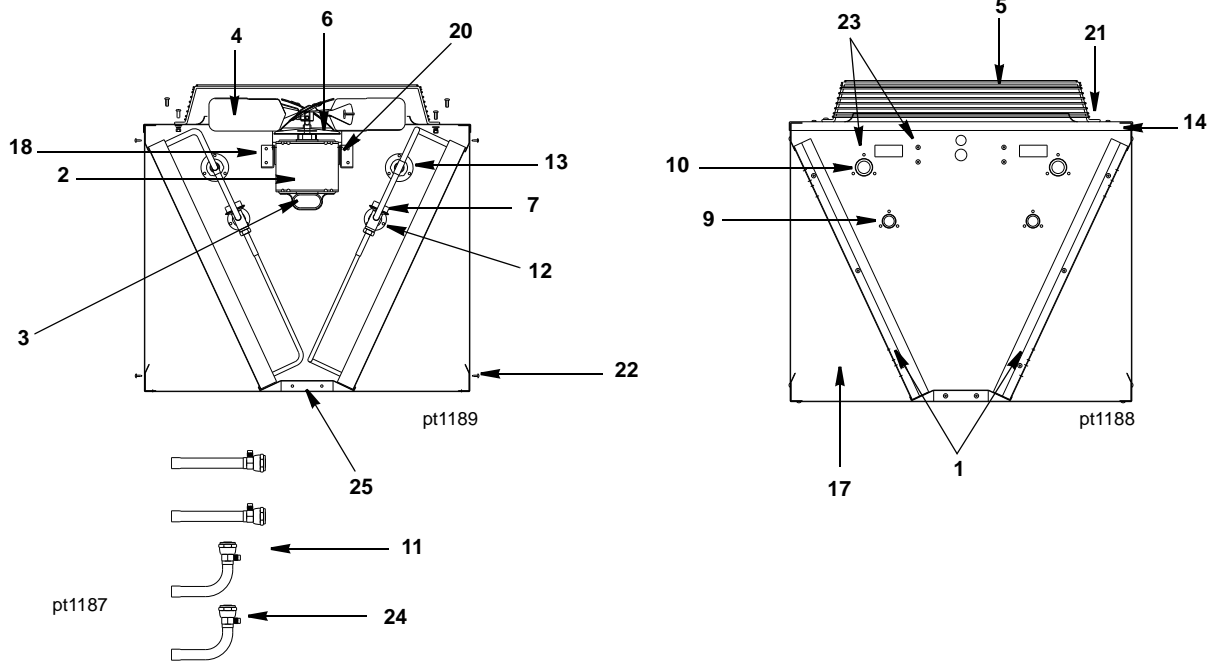
DESCRIPTION	PART NO.
1 Air Condenser .....	† 8850629
2 Fan Motor (208-230V/50-60 Hz/1 Ph) .....	† 7629413
3 Fan Motor Run Capacitor (Emerson) .....	8504583
3 Fan Motor Run Capacitor (Magnatec) .....	No Longer Available
4 Fan Blade .....	2416113
5 Fan Guard .....	3400643
6 Rain Slinger .....	2415053
7 Head Pressure Control .....	000004070
8 Coupling – Male, 5/8-18 .....	† 8360343
9 Coupling – Male, 1 1/16-12 .....	† 8360353
10 Female Line Set Coupling Kit (Sold as Finished Goods Sales Kit) .....	Sales K0129

### Miscellaneous – Brackets, Screws, etc.

11 Coupling Mounting Flange (for 5/8-18) .....	8360053
12 Coupling Mounting Flange (for 1-1/16-12) .....	8360063
13 Top Cover .....	† 6017751
14 Panel – Side .....	† 6017741
15 Panel – Rear .....	† 6017731
16 Panel – Front .....	† 6017721
17 Fan Motor Mounting Bracket .....	† 6017681
18 Electrical Box Cover .....	† 6017761
19 <b>Fan Motor Mounting Screw</b> (5/16-18 x 5/8) .....	† 5035659
a. Fan Motor Mounting Flatwasher .....	† 5573099
b. Fan Motor Mounting Lockwasher .....	† 5573139
c. Fan Motor Mounting Hexnut .....	5429759
20 <b>Fan Guard Mounting Screw</b> (1/4-20 x 5/8) .....	† 5033459
a. Fan Guard Mounting Flatwasher .....	† 5573049
b. Fan Guard Mounting Lockwasher .....	† 5545119
c. Fan Guard Mounting Hexnut .....	† 5429529
21 <b>Panel/Condenser Mounting Screw</b> (#8 x 1/2) .....	† 5121539
a. Panel/Condenser Mounting Lockwasher .....	† 5544599
22 Screw (#10-24 x 1/2) .....	† 5202069
23 Valve Cores (used in line sets) .....	7626843
24 Legs (Not shown) .....	† 6017691

† Refer to Cross Reference Guide

## DC0862 DUAL CIRCUIT REMOTE CONDENSER (USED WITH Q600 AND Q800 REMOTE ICE MACHINES)



### DESCRIPTION

	<b>PART NO.</b>
1 Air Condenser . . . . .	† 8850629
2 Fan Motor (115V/60 Hz/1 Ph) . . . . .	† 7629423
3 Fan Motor Run Capacitor . . . . .	No Longer Available
4 Fan Blade . . . . .	2416113
5 Fan Guard . . . . .	3400643
6 Rain Slinger . . . . .	2415053
7 Head Pressure Control . . . . .	000004070
8 Terminal Block . . . . .	000008040
9 Coupling – Male, 5/8-18 . . . . .	† 8360343
10 Coupling – Male, 1-1/16-12 . . . . .	† 8360353
11 Female Line Set Coupling Kit (Sold as Finished Goods Sales Kit) . . . . .	Sales K0129

### Miscellaneous – Brackets, Screws, etc.

12 Coupling Mounting Flange (for 5/8-18) . . . . .	8360053
13 Coupling Mounting Flange (for 1-1/16-12) . . . . .	8360063
14 Top Cover . . . . .	6017891
15 Legs (Not shown) . . . . .	† 6017691
16 Panel – Rear (Not shown) . . . . .	† 6017881
17 Panel – Front . . . . .	† 6017871
18 Fan Motor Mounting Bracket . . . . .	† 6017681
19 Electrical Box Cover (Not shown) . . . . .	† 6017761
20 <b>Fan Motor Mounting Screw</b> (5/16-18 x 5/8) . . . . .	† 5035659
a. Fan Motor Mounting Flatwasher . . . . .	† 5573099
b. Fan Motor Mounting Lockwasher . . . . .	† 5573139
c. Fan Motor Mounting Hexnut . . . . .	5429759
21 <b>Fan Guard Mounting Screw</b> (1/4-20 x 5/8) . . . . .	† 5033459
a. Fan Guard Mounting Flatwasher . . . . .	† 5573049
b. Fan Guard Mounting Lockwasher . . . . .	† 5545119
c. Fan Guard Mounting Hexnut . . . . .	† 5429529
22 <b>Panel/Condenser Mounting Screw</b> (#8 x 1/2) . . . . .	† 5121539
a. Panel/Condenser Mounting Lockwasher . . . . .	† 5544599
23 Screw (#10-24 x 1/2) . . . . .	† 5202069
24 Valve Cores (used in line sets) . . . . .	7626843
25 Base Angle . . . . .	6017791
26 Fan Cycle Kit K00095 (Not shown)	
a. Relay . . . . .	No Longer Available
b. Relay Mounting Bracket . . . . .	No Longer Available
c. Transformer . . . . .	No Longer Available
d. Electrical Junction . . . . .	2515013