

Hoshizaki America, Inc.

Modular Crescent Cuber

Models

KML-45 IMAH

KML-45 IMWH



“A Superior Degree
of Reliability”

www.hoshizaki.com

PARTS LIST



Number: 71262
Issued: 10-12-2006
Revised: 11-13-2014

CONTENTS

Auxiliary Codes.....	3
Note About Ordering Parts	4
A. Ice Cuber Assembly & Refrigeration Circuit	5
KML-451MAH.....	5
KML-451MWH.....	7
B. Water Circuit.....	9
C. Control Box Assembly	11
D. Accessories & Labels	13

Auxiliary Codes

KML-451MAH	R-0	June 2006
	S-1	January 2007
	S-2	December 2007
	T-0	January 2008
	T-1	November 2008
	T-2	December 2008
	U-0	January 2009
	U-1	August 2009
	V-0	January 2010
	V-1	July 2010
	A-0	January 2011
	A-1	September 2011
	B-0	January 2012
	B-1	November 2012
C-0	January 2013	
D-0	January 2014	

KML-451MWH	R-0	June 2006
	S-1	April 2007
	S-2	December 2007
	T-0	January 2008
	U-0	January 2009
	U-1	January 2009
	V-0	January 2010
	V-1	July 2010
	V-2	December 2010
	A-0	January 2011
	A-1	September 2011
	B-0	January 2012
	B-1	November 2012
	C-0	January 2013
D-0	January 2014	

Auxiliary Code Breakdown

The auxiliary code is the first two characters in the serial number. The first character indicates the year. Years progress or regress in alphabetical order. The series runs from "A" through "V" and the letters "I" and "O" are skipped. The second character indicates significant part changes within a year. Base is "0" and this number advances for each change. In cases where there is a letter in parentheses, this designates the month. This is the last character in the serial number. The series runs from "(A)" through "(M)" and the letter "(I)" is skipped. This designation is only included when identifying a parts change within an auxiliary code.

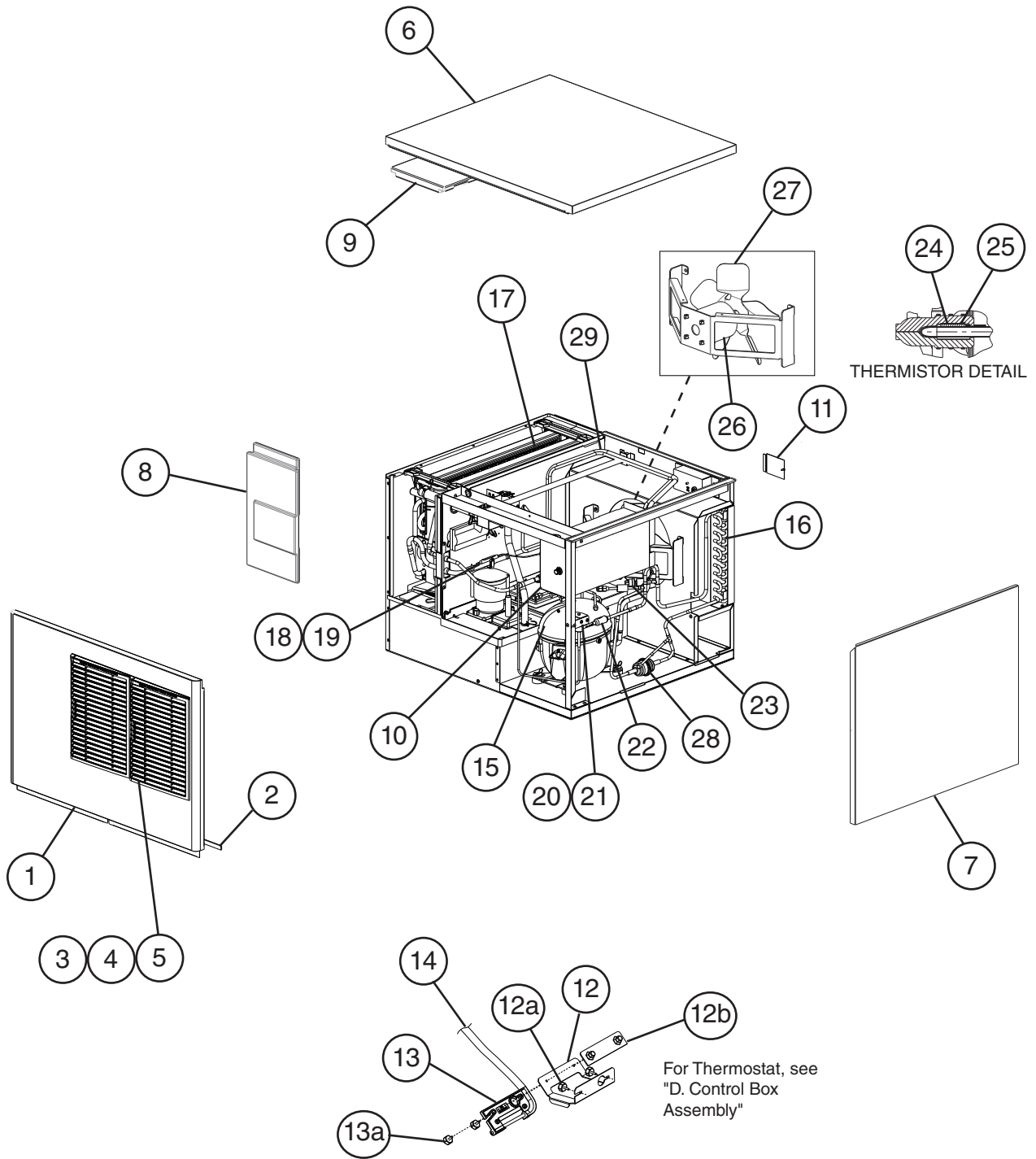
Note About Ordering Parts

Most assemblies cannot be ordered as complete units; parts in the assemblies generally must be ordered separately.

A. Ice Cuber Assembly & Refrigeration Circuit

KML-451MAH

R-0 to D-0

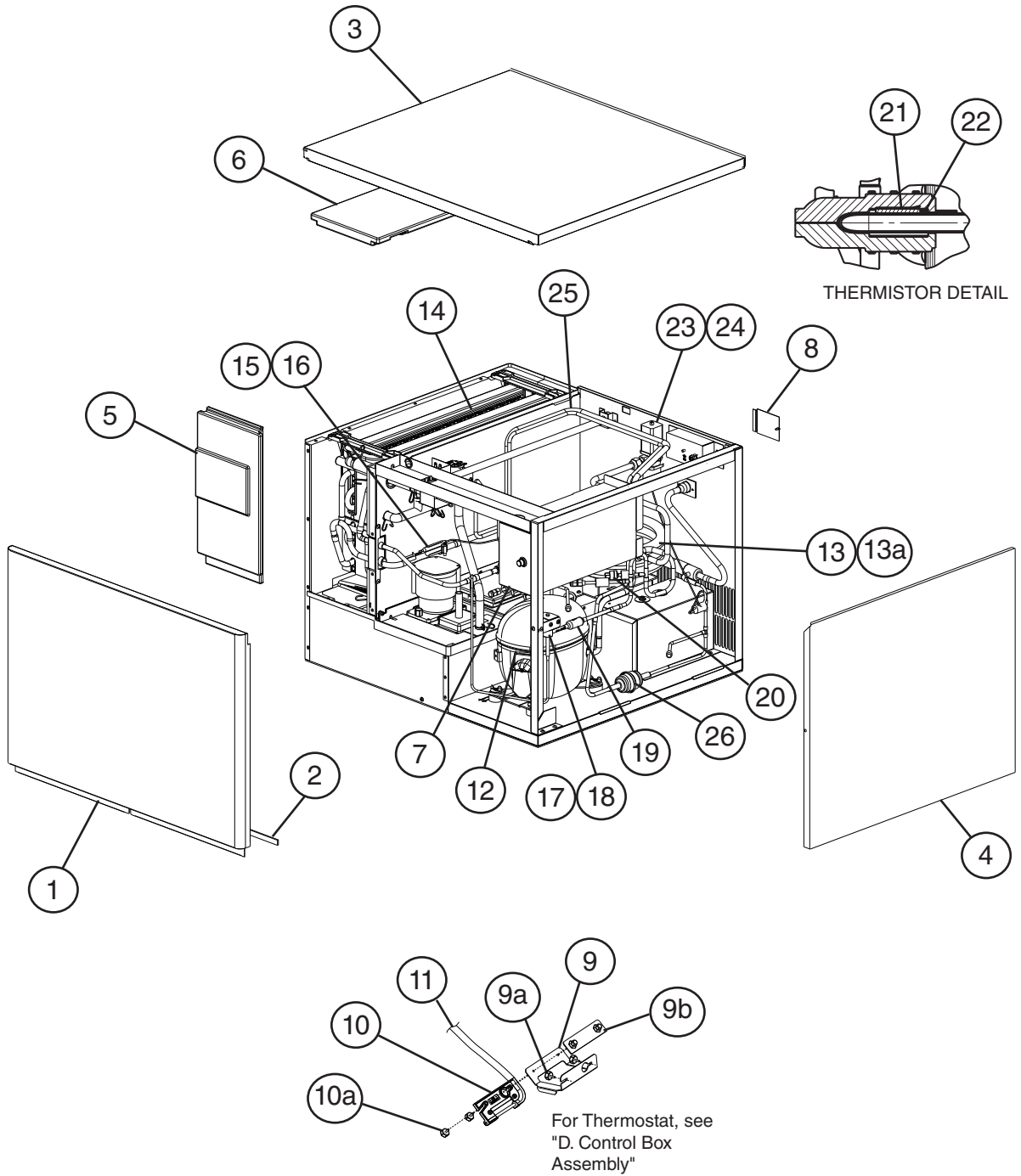


Title: A. Ice Cuber Assembly Model: KML-451MAH												
Index No.	Description	Material Or Model Number	Part Number	Required Number								
				R-0 to T-2 U-0	T-1 to U-1 D-0							
Ice Cuber Assembly												
1	Front Panel		2A2107-01	1	1							
2	Gasket		4A0808L02	1	1							
3	Louver		1A0548-01	2	2							
4	Push Retainer		4A2414-01	6	6							
5	Air Filter		2A2063G01	2	2							
6	Top Panel		2A2110-01	1	1							
7	Right Side Panel		2A2111G01	1	1							
8	Front Insulation		2A4540A01	1	1							
9	Top Insulation		215730G01	1	1							
10	Control Box Cover		3A2371-01	1	1							
11	Junction Box Cover		433410-01	1	1							
12	Bin Control Extension Bracket		4A4358-01	1	1							
12a	Thumbscrew		415949G10	2	2							
12b	NSF Plate		4A4401G01	1	1							
13	Bin Control Bulb Holder		3A3903-01		1							
13a	Thumbscrew		415949G11		2							
14	Silicone Hose	L=310 mm	7730I38I2	1	1							
Refrigeration Circuit												
15	Compressor		4A2300-01	1	-							
			4A4479-01		1							
16	Condenser		2A0640-01	1	1							
17	Evaporator Assembly		2A0717G01	1	1							
18	Thermostatic Expansion Valve		4A4008-01	1	-							
			4A1684-01		1							
19	Thermostatic Expansion Valve Cover		3A0944-01	1	1							
20	Thermostatic Expansion Valve Holder		3A0107-01	1	1							
21	Hot Gas Valve Body		4A3978-01	1	1							
22	Valve Coil		4A3277-01	1	1							
23	Strainer		4A0397-01	1	-							
			441569-02		1							
24	High-Pressure Switch		433441-07	1	-							
			463180-04		1							
25	Thermistor		429006-03	1	1							
26	Thermistor Holder		427430-01	1	1							
27	Fan Motor		4A3158-01	1	1							
28	Fan Blade		4A4014-01	1	1							
29	Drier		4A2666-01	1	1							
30	Heat Exchanger		2A3685G01	1	-							
			2A4894G01		1							

A. Ice Cuber Assembly & Refrigeration Circuit

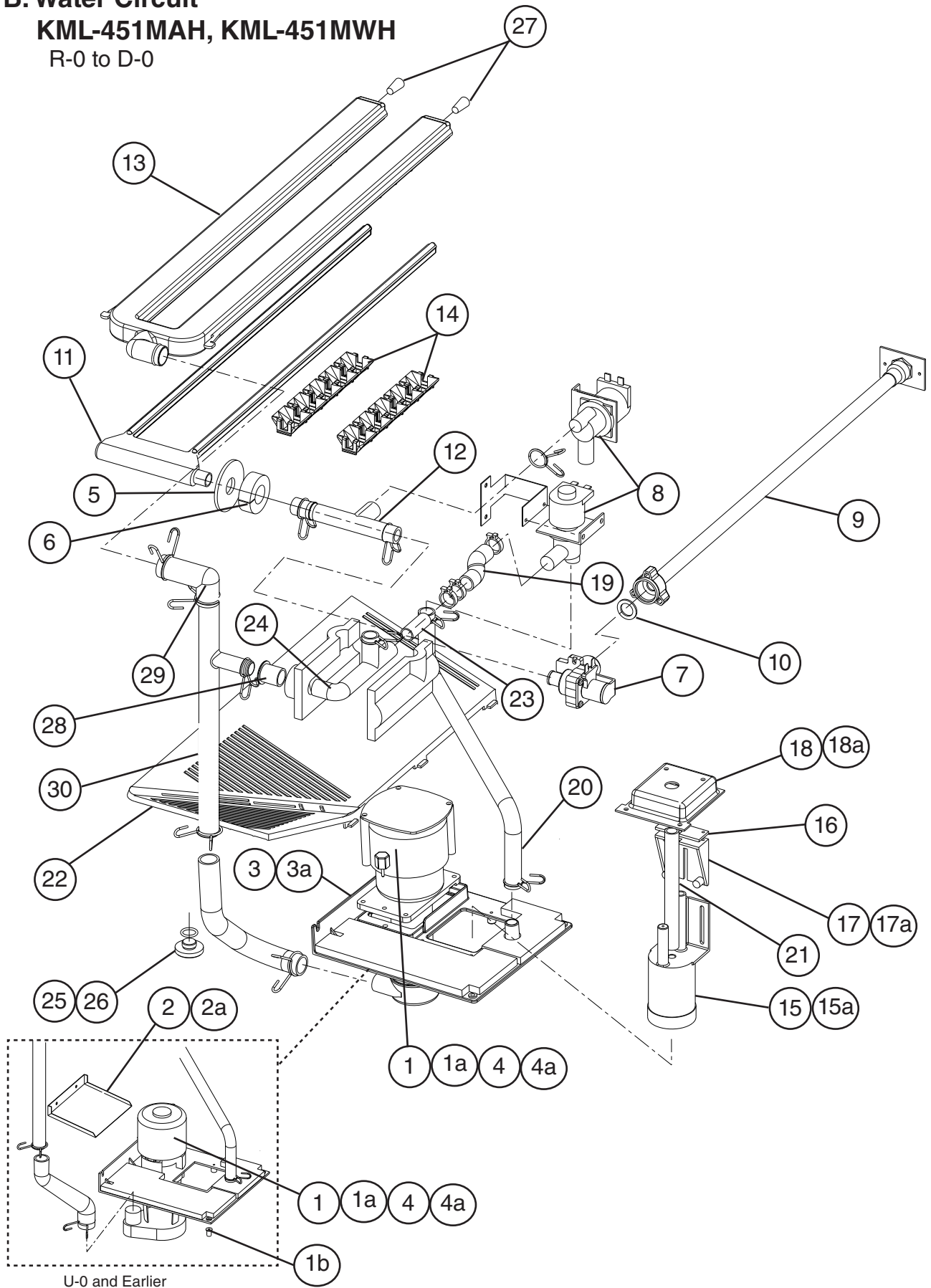
KML-451MWH

V-0 to D-0



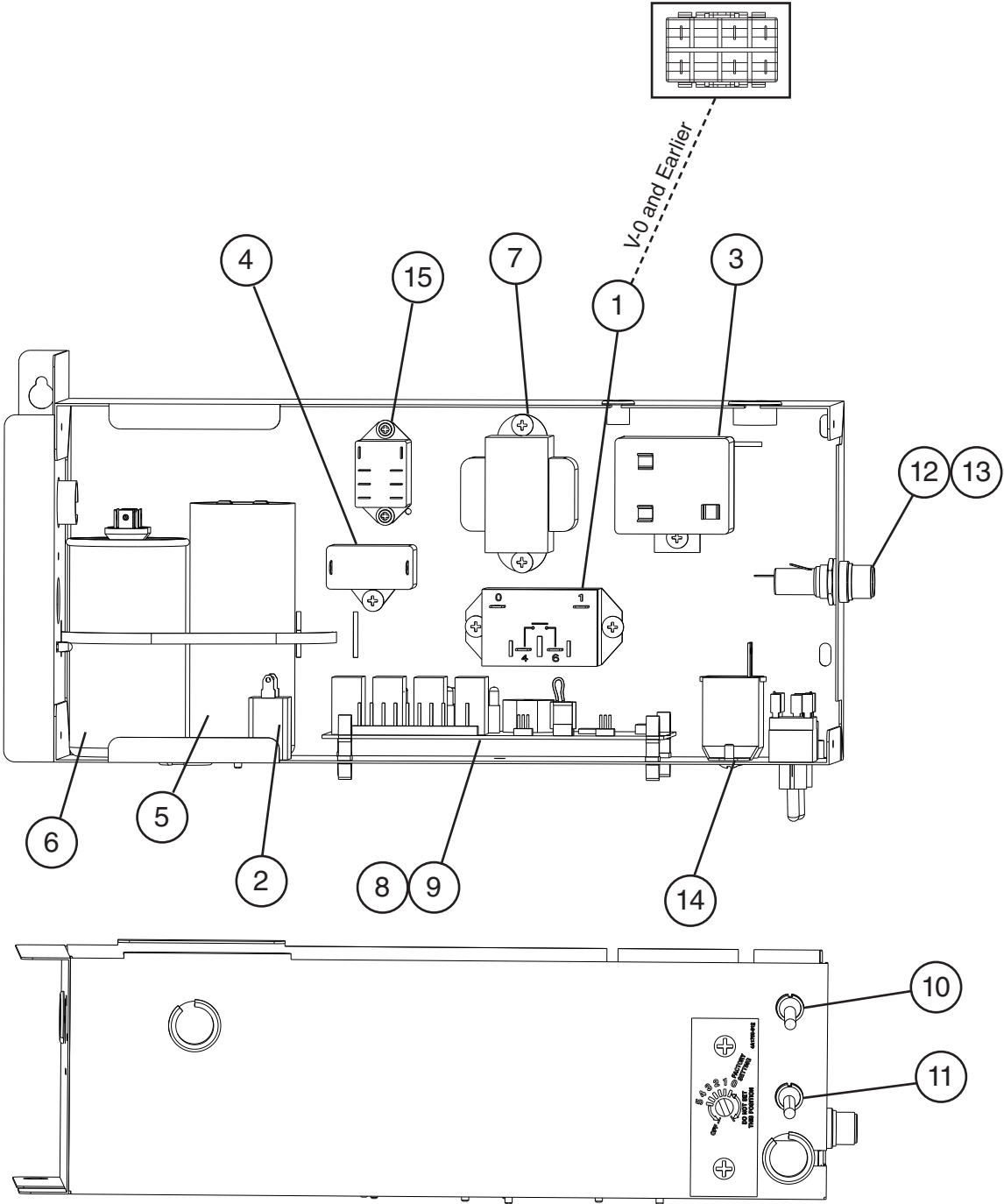
Title: A. Ice Cuber Assembly Model: KML-451MWH												
Index No.	Description	Material or Model Number	Part Number	Required Number								
				R-0 to U-0	U-1 to B-1	C-0 D-0						
Ice Cuber Assembly												
1	Front Panel		2A2107-02	1	1	1						
2	Gasket		4A0808L02	1	1	1						
3	Top Panel		2A2110-01	1	1	1						
4	Right Side Panel		2A2111G01	1	1	1						
5	Front Insulation		2A0664G01	1	1	1						
6	Top Insulation		215730G01	1	1	1						
7	Control Box Cover		3A2371-01	1	1	1						
8	Junction Box Cover		433410-01	1	1	1						
9	Bin Control Extension Bracket		4A4358-01	1	1	1						
9a	Thumbscrew		415949G10	2	2	2						
9b	NSF Plate		4A4401G01	1	1	1						
10	Bin Control Bulb Holder		3A3903-01		1	1						
10a	Thumbscrew		415949G11		2	2						
11	Silicone Hose	L=310 mm	773013812	1	1	1						
Refrigeration Circuit												
12	Compressor		4A2300-01	1	-							
			4A4376-01		1	1						
13	Condenser		2A2359G01	1	1	-						
			3A7321-01			1						
13a	Hex Head Bolt w/Washer (LF)	5x12	7B0130512	2	2	2						
14	Evaporator		2A0717G01	1	1	1						
15	Thermostatic Expansion Valve		4A4008-01	1	-							
			4A1684-01		1	1						
16	Thermostatic Expansion Valve Holder		3A0107-01	1	1	1						
17	Hot Gas Valve Body		4A3978-01	1	1	1						
18	Valve Coil		4A3277-01	1	1	1						
19	Strainer		4A0397-01	1	-							
			441569-02		1	1						
20	High-Pressure Switch		433441-05	1	-							
			463180-05		1	1						
21	Thermistor		429006-03	1	1	1						
22	Thermistor Holder		427430-01	1	1	1						
23	Water Regulator		4A0911-06	1	1	1						
24	Male Connector		4A1087-01	1	1	1						
25	Heat Exchanger		2A3685G01	1	-							
			2A4894G01		1	1						
26	Drier		4A2666-01	1	1	1						

B. Water Circuit
KML-451MAH, KML-451MWH
 R-0 to D-0



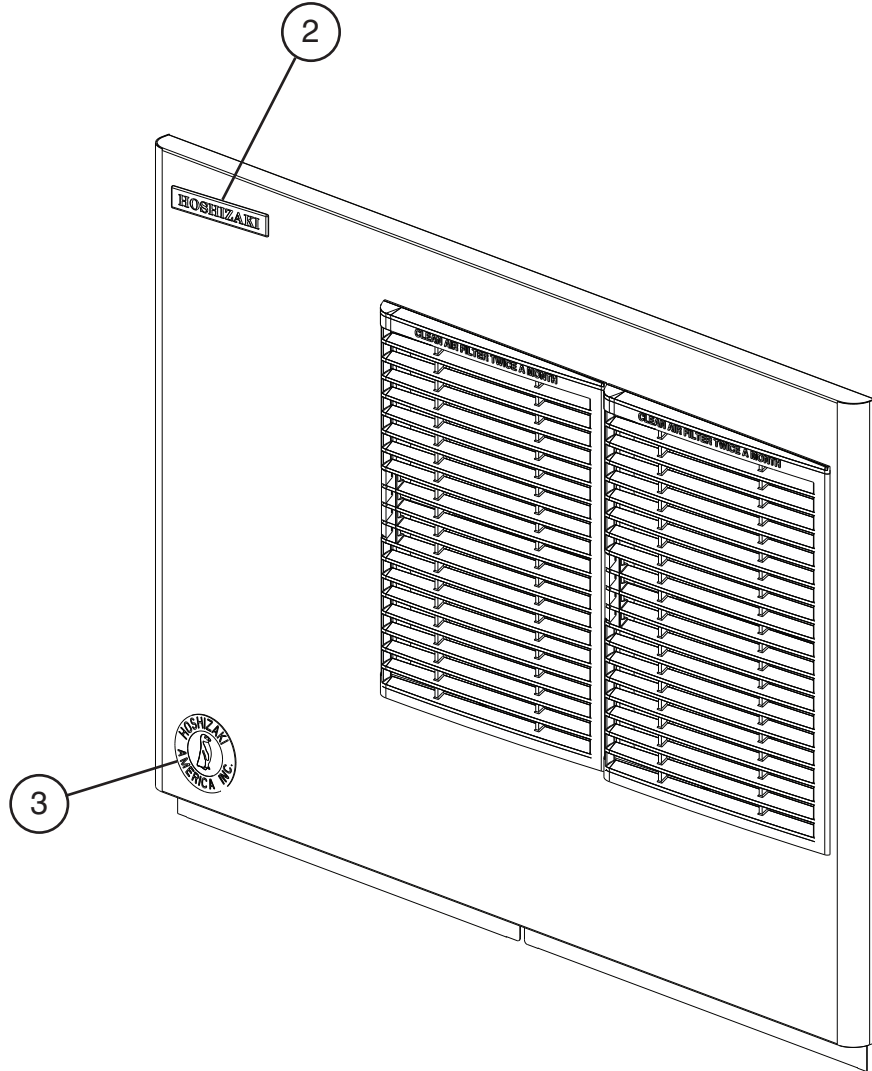
Title: B. Water Circuit Model: KML-451MAH, KML-451MWH												
Index No.	Description	Material or Model Number	Part Number	Required Number								
				R-0 S-1	S-2 T-0	T-0 to U-0	U-1 to D-0					
1	Pump Motor		HS-0232	1	1	1	-					
			4A4259-01				1					
1a	Truss Head Screw		7C32-0416	4	4	4	-					
	Thumbscrew		415949G11				1					
1b	Wellnut		4A1070-01	2	2	-						
2	Barrier		4A2997-01	1	1	1	-					
2a	T2 Screw		7P32-0408	2	2	2	-					
3	Pump Bracket		2A4920G01				1					
3a	Truss Head Screw		7C32-0416				4					
4	Tooth Washer (Pump Motor Ground)		7R21-0400	1	1	1	1					
4a	T2 Screw (Pump Motor Ground)		7P31-0408	1	1	1	1					
5	Flange		439267-01	1	1	1	1					
6	Insulation (E)		4A0392-01	1	1	1	1					
7	Inlet Water Valve		3U0150-01	1	1	1	1					
8	Cleaning Valve/Drain Valve		439322-01	2	-							
			4A3722-01		2	2	2					
9	Water Supply Pipe		4A0768G04	1	1	1	1					
10	Rubber Gasket		413854-03	1	1	1	1					
11	Water Supply Tube		2A0079-01	1	1	1	1					
12	Water Supply Tee		4A1006-01	1	1	1	1					
13	Spray Tube		1A0260-02	1	1	1	1					
14	Spray Guide		208586-01	6	6	6	6					
15	Float Switch		4A3624-01	1	1	1	1					
15a	T2 Screw		7P32-0408	2	2	2	2					
16	Float Switch Spacer		4A0650-01				1					
17	Float Switch Bracket		327757-01	1	1	1	1					
17a	T2 Screw		7P32-0412	2	2	2	2					
18	Float Switch Cover		3A0665-01	1	1	1	1					
18a	T2 Screw		7P32-0412	3	3	3	3					
19	Vinyl Hose	L=55 mm	7716-1519	1	1	1	1					
20	Vinyl Hose	L=325 mm	7716-1519	1	1	1	1					
21	Vinyl Hose	L=150 mm	7716-1216	1	1	1	1					
22	Cube Guide		2A0660-01	1	1	1	1					
23	Joint Pipe		439329-01	1	1	1	1					
24	Bypass Hose		4A1005-01	1	1	1	1					
25	Drain		309246-01	1	1	1	1					
26	O-Ring		7611-P015	1	1	1	1					
27	Plug		4A0176-01	2	2	2	2					
28	Rubber Ring		4A1004-01	1	1	1	1					
29	Elbow		4A0393-01	1	1	1	1					
30	Connecting Pipe		3A1335-01	1	1	1	1					
Hose Clamps												
	Hose Clamp	18 mm	427443-05	5	5	5	5					
	Hose Clamp	27 mm	427443-08	1	1	1	1					
	Hose Clamp	20 mm	427443-06	2	2	2	2					
	Hose Clamp	18 mm	4A2017-06	3	-							
			427443-05		3	3	3					
	Hose Clamp	25 mm	427443-03	3	3	3	3					

C. Control Box Assembly
KML-451MAH, KML-451MWH
 R-0 to D-0



Title: C. Control Box Assembly Model: KML-451MAH, KML-451MWH												
Index No.	Description	Material or Model Number	Part Number	Required Number								
				R-0 to T-0 T-2 U-0	T-1 U-1 to V-0	V-1 to B-0	B-1 to D-0					
1	Magnetic Contactor		428393-01	1	1	-						
	Compressor Relay		4A3140-01			1	1					
2	Pump Motor Capacitor	2.5 MFD, 250 VAC	4A2128-05			1	1					
3	Start Relay		4A1107-11	1	1	1	1					
4	Fan Motor Capacitor	KML-451MAH 5MFD, 250 VAC	443192-02	1	1	1	1					
5	Start Capacitor	243-292MFD, 115VAC	3A0076-10	1	-							
		243-292MFD, 165VAC	3A0076-20		1	1	1					
6	Run Capacitor	15MFD, 370VAC	3A2005-08	1	-							
		35MFD, 440VAC	3A2005-12		1	1	1					
7	Control Transformer		3A0172-01	1	1	1	1					
8	Control Board	"E" Control Board	2A1410-01	1	1	1	-					
		"G" Control Board	2A3792-01				1					
9	Control Board Support		4A0336-03	4	4	4	4					
10	Toggle Switch		443119-01	1	1	1	1					
11	Toggle Switch		4A0985-01	1	1	1	1					
12	Fuse Holder		4A5443-01	1	1	1	1					
13	Fuse		4A0893-07	2	2	2	2					
14	Thermostat		4A2879-01	1	1	1	1					
15	Relay (Drain)		406132-07	1	1	1	1					

D. Accessories & Labels
KML-451MAH, KML-451MWH
 R-0 to D-0



Title: D. Accessories & Labels		Model: KML-451MAH, KML-451MWH		Required Number								
Index No.	Description	Material or Model Number	Part Number	R-0 to D-0								
1	Universal Brace		4A0363-01	2								
1a	Hex Head Bolt	5x12	7B02-0512	2								
2	Hoshizaki Emblem Label		4A0560-01	1								
3	Penguin Label		4A0526-01	1								