

# Hoshizaki America, Inc.

## Stackable Crescent Cuber

### Models

KM-I900SAH/3

KMI900SAH350

KM-I900SVWH/3

KM-I900SRH/3



“A Superior Degree  
of Reliability”

[www.hoshizaki.com](http://www.hoshizaki.com)

## PARTS LIST



Number: 71291  
Issued: 12-22-2008  
Revised: 4-11-2014

## CONTENTS

Auxiliary Codes.....	3
Note About Ordering Parts .....	3
A. Ice Cuber Assembly & Refrigeration Circuit .....	4
KM-1900SAH/3, KM1900SAH350 .....	4
KM-1900SWH/3 .....	7
KM-1900SRH/3 .....	10
B. Water Circuit .....	13
C. Control Box Assembly .....	16
D. Accessories & Labels .....	17

## Auxiliary Codes

<b>KM-1900SAH</b>	T-0 October 2008 U-0 January 2009 V-1 August 2010 A-0 January 2011 B-0 January 2012 C-0 January 2013 D-0 January 2014 D-1 February 2014	<b>KM-1900SWH3</b>	T-0 October 2008 U-0 February 2009 V-1 December 2010 A-0 June 2011 D-1 TBD
<b>KM-1900SAH3</b>	T-0 October 2008 U-0 January 2009 V-0 January 2010 V-1 July 2010 A-0 January 2011 B-0 January 2012 C-0 January 2013 D-0 January 2014 D-1 February 2014	<b>KM-1900SRH</b>	T-0 October 2008 U-0 January 2009 V-0 January 2010 V-1 July 2010 A-0 January 2011 A-1 October 2011 B-0 January 2012 C-0 January 2013 D-0 January 2014 D-1 February 2014
<b>KM1900SAH350</b>	U-0 July 2009 V-0 January 2010 A-0 January 2011 B-0 May 2012 C-0 September 2013 D-0 January 2014	<b>KM-1900SRH3</b>	T-0 October 2008 U-0 January 2009 V-0 January 2010 V-1 July 2010 A-0 January 2011 A-1 October 2011 B-0 January 2012 C-0 January 2013 D-0 January 2014 D-1 February 2014
<b>KM-1900SWH</b>	T-0 October 2008 U-0 April 2009 V-0 February 2010 V-1 July 2010 A-0 February 2011 B-0 March 2012 C-0 February D-1 TBD		

## Auxiliary Code Breakdown

The auxiliary code is the first two characters in the serial number. The first character indicates the year. Years progress or regress in alphabetical order. The series runs from "A" through "V" and the letters "I" and "O" are skipped. The second character indicates significant part changes within a year. Base is "0" and this number advances for each change. In cases where there is a letter in parentheses, this designates the month. This is the last character in the serial number. The series runs from "(A)" through "(M)" and the letter "(I)" is skipped. This designation is only included when identifying a parts change within an auxiliary code.

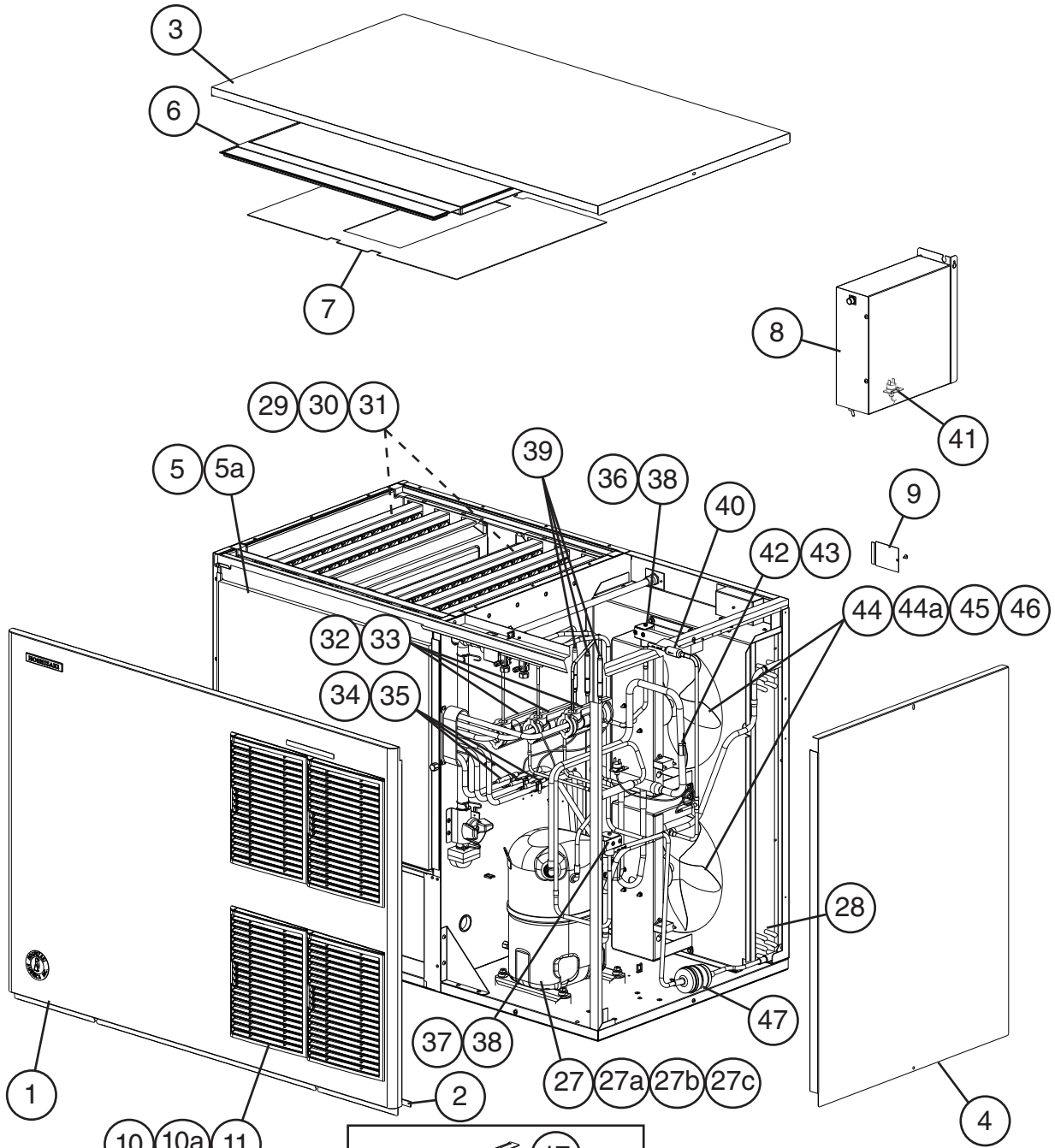
## Note About Ordering Parts

Most assemblies cannot be ordered as complete units; parts in the assemblies generally must be ordered separately.

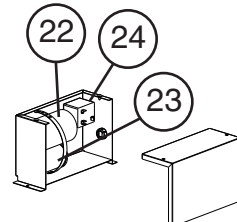
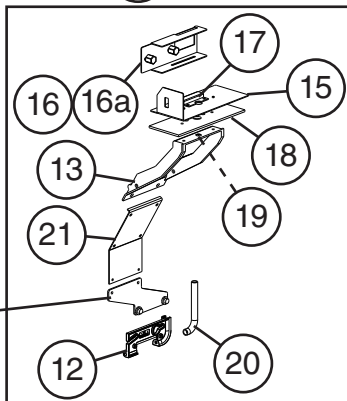
# A. Ice Cuber Assembly & Refrigeration Circuit

## KM-1900SAH/3, KM1900SAH350

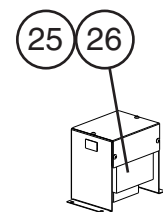
T-0 to D-1



Item 14 is for use with Hoshizaki bins B-1300, B-1500, B-1650, and non-Hoshizaki bins.



KM-1900SAH



KM-1900SAH3  
KM1900SAH350

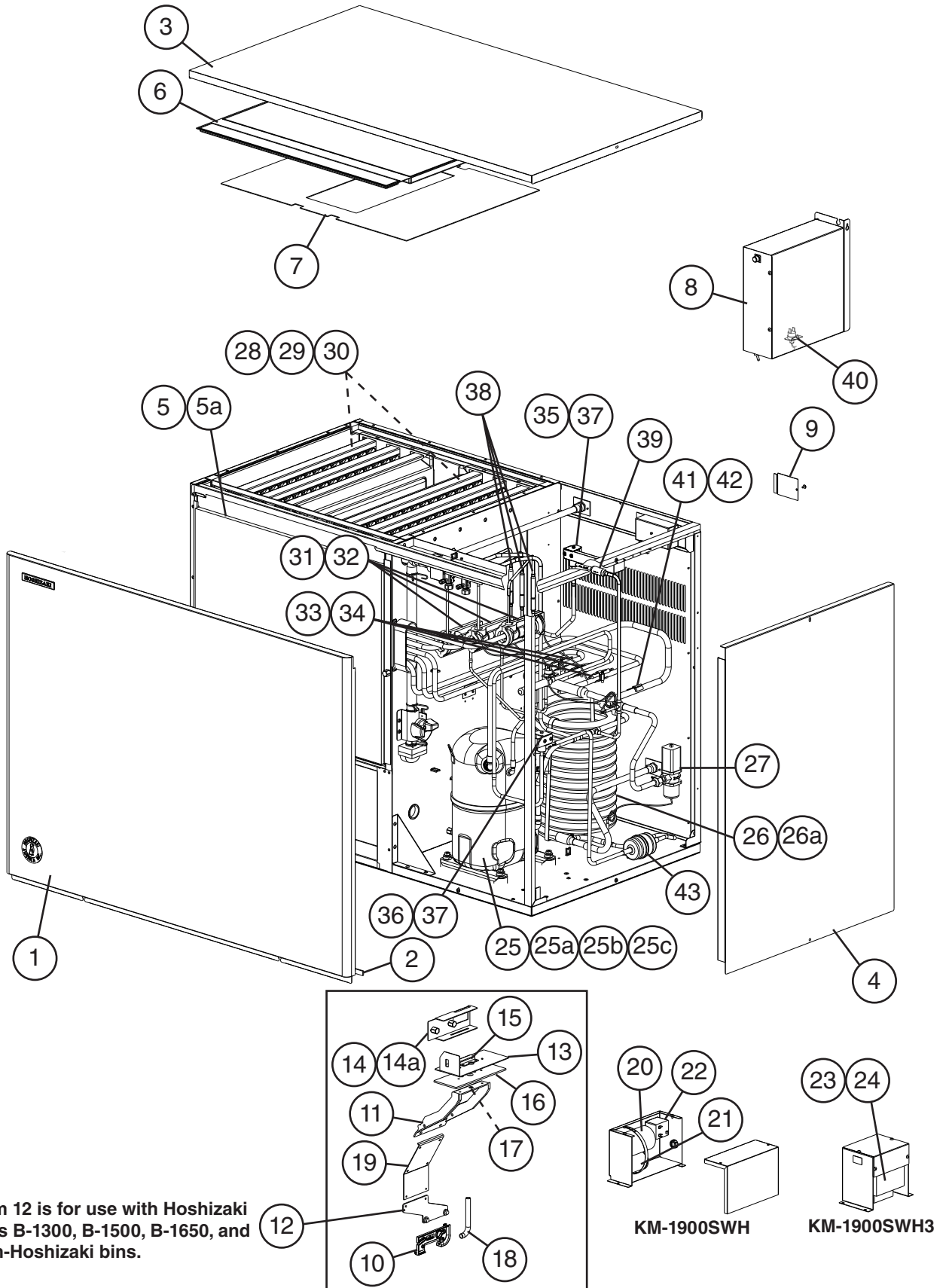
Title: A. Ice Cuber Assembly & Refrigeration Circuit Model: KM-1900SAH/3, KM1900SAH350												
Index No.	Description	Material or Model Number	Part Number	Required Number								
				T-0 to D-1								
<b>Ice Cuber Assembly</b>												
1	Front Panel		3A1800G01	1								
2	Gasket	L=1219	4A0808L02	1								
3	Top Panel		2A2255-01	1								
4	Right Side Panel		215381G02	1								
5	Front Insulation		326041G01	1								
5a	Thumbscrew		415949G12	1								
6	Top Insulation		324216G01	1								
7	Spacer		324321-01	1								
8	Control Box Cover		3A2386-01	1								
9	Junction Box Cover		433410-01	1								
10	Louver		1A0548-01	4								
10a	Push Retainer		4A2414-01	12								
11	Air Filter		2A2063G01	4								
12	Bin Control Bulb Holder		3A3903-01	1								
13	Bin Control Bulb Holder C	ABS	216340G01	1								
14	Bin Control Bulb Holder C	Z Bracket	325845G01	1								
15	Bin Control Bulb Holder E		439725-01	1								
16	Bin Control Bulb Holder F		328743-01	1								
16a	Thumbscrew		415949G12	2								
17	Bin Control Bulb Holder G		439726-01	1								
18	Spacer		439727-01	1								
19	Capillary Ring		425307-01	1								
20	Silicone Hose	L=285	7730I3812	1								
21	Bin Control Extension Bracket		3A0408-01	1								
22	Start Capacitor	<b>KM-1900SAH</b> 189-227 MFD, 330V	3A0076-12	1								
23	Run Capacitor	<b>KM-1900SAH</b> 35MFD, 440V	3A2005-12	1								
24	Start Relay (Starter)	<b>KM-1900SAH</b>	4A1107-09	1								
25	Main Transformer	<b>KM-1900SAH3</b>	4A0817-01	1								
		<b>KM1900SAH350</b>	4A4729-01	1								
26	Voltage Tap Switch	<b>KM-1900SAH3</b>	4A1477-01	1								
<b>Refrigeration Circuit</b>												
27	Compressor	<b>KM-1900SAH</b>	4A4581-01	1								
		<b>KM-1900SAH3</b>	4A4582-01	1								
		<b>KM1900SAH350</b>	4A4732-01	1								
27a	Spacer		434921-01	4								
27b	Grommet		434922-01	4								
27c	Hex Head Bolt w/Washer	8x45	437889-01	4								
28	Condenser		2A1991-01	1								
29	Evaporator Bank (each bank includes 3 of item 30)	HS-008	2A0416G01	2								
30	Evaporator Plate	S-0641	103317G02	6								
31	Separator Hook		324152-01	8								

Title: A. Ice Cuber Assembly & Refrigeration Circuit Model: KM-1900SAH/3, KM1900SAH350											
Index No.	Description	Material or Model Number	Part Number	Required Number							
				T-0 to D-1							
32	Thermostatic Expansion Valve		4A1414-01	3							
33	Thermostatic Expansion Valve Cover		3A0944-01	3							
34	Thermostatic Expansion Valve Bulb Holder		3A0107-01	3							
35	Clamp		443461-02	3							
36	Hot Gas Valve Body		4A3978-01	1							
37	Liquid Line Valve Body		4A3276-01	1							
38	Valve Coil		4A3277-01	2							
39	Check Valve		4A1373-01	3							
40	Strainer		441569-02	1							
41	High-Pressure Switch		433441-07	1							
42	Thermistor		429006-03	1							
43	Thermistor Holder		438247-01	1							
44	Fan Motor	50 Watt GEHI	4A3158-01	2							
44a	Self-Locking Nut	8-32	7N2110832	8							
45	Fan Motor Capacitor	5.0MFD, 250V	443192-02	2							
46	Fan Blade		4A0197-01	2							
47	Drier		4A2663-01	1							

# A. Ice Cuber Assembly & Refrigeration Circuit

## KM-1900SWH/3

T-0 to D-1



<b>Title: A. Ice Cuber Assembly &amp; Refrigeration Circuit Model: KM-1900SWH/3</b>											
Index No.	Description	Material or Model Number	Part Number	T-0 to D-1	Required Number						
<b>Ice Cuber Assembly</b>											
1	Front Panel		3A1838G01	1							
2	Gasket	L=1219	4A0808L02	1							
3	Top Panel		2A2255-01	1							
4	Right Side Panel		215381G02	1							
5	Front Insulation		326041G01	1							
5a	Thumbscrew		415949G12	1							
6	Top Insulation		324216G01	1							
7	Spacer		324321-01	1							
8	Control Box Cover		3A2386-01	1							
9	Junction Box Cover		433410-01	1							
10	Bin Control Bulb Holder		3A3903-01	1							
11	Bin Control Bulb Holder C	ABS	216340G01	1							
12	Bin Control Bulb Holder C	Z Bracket	325845G01	1							
13	Bin Control Bulb Holder E		439725-01	1							
14	Bin Control Bulb Holder F		328743-01	1							
14a	Thumbscrew		415949G12	2							
15	Bin Control Bulb Holder G		439726-01	1							
16	Spacer		439727-01	1							
17	Capillary Ring		425307-01	1							
18	Silicone Hose	L=285	773013812	1							
19	Bin Control Extension Bracket		3A0408-01	1							
20	Start Capacitor	<b>KM-1900SWH</b> 189-227 MFD, 330V	3A0076-12	1							
21	Run Capacitor	<b>KM-1900SWH</b> 35MFD, 440V	3A2005-12	1							
22	Start Relay	<b>KM-1900SWH</b>	4A1107-09	1							
23	Main Transformer	<b>KM-1900SWH3</b>	4A0817-01	1							
24	Voltage Tap Switch	<b>KM-1900SWH3</b>	4A1477-01	1							
<b>Refrigeration Circuit</b>											
25	Compressor	<b>KM-1900SWH</b>	4A4581-01	1							
		<b>KM-1900SWH3</b>	4A4582-01	1							
25a	Spacer		434921-01	4							
25b	Grommet		434922-01	4							
25c	Hex Head Bolt w/Washer	8x45	437889-01	4							
26	Condenser	HS-0164	2A2359G05	1							
26a	Hex Head Bolt w/Washer	5x12	7B0130512	2							
27	Water Regulating Valve		4A0911-07	1							
28	Evaporator Bank (each bank includes 3 of item 29)	HS-008	2A0416G01	2							
29	Evaporator Plate	S-0641	103317G02	6							
30	Separator Hook		324152-01	8							
31	Thermostatic Expansion Valve		4A1414-01	3							
32	Thermostatic Expansion Valve Cover		3A0944-01	3							
33	Thermostatic Expansion Valve Bulb Holder		3A0107-01	3							

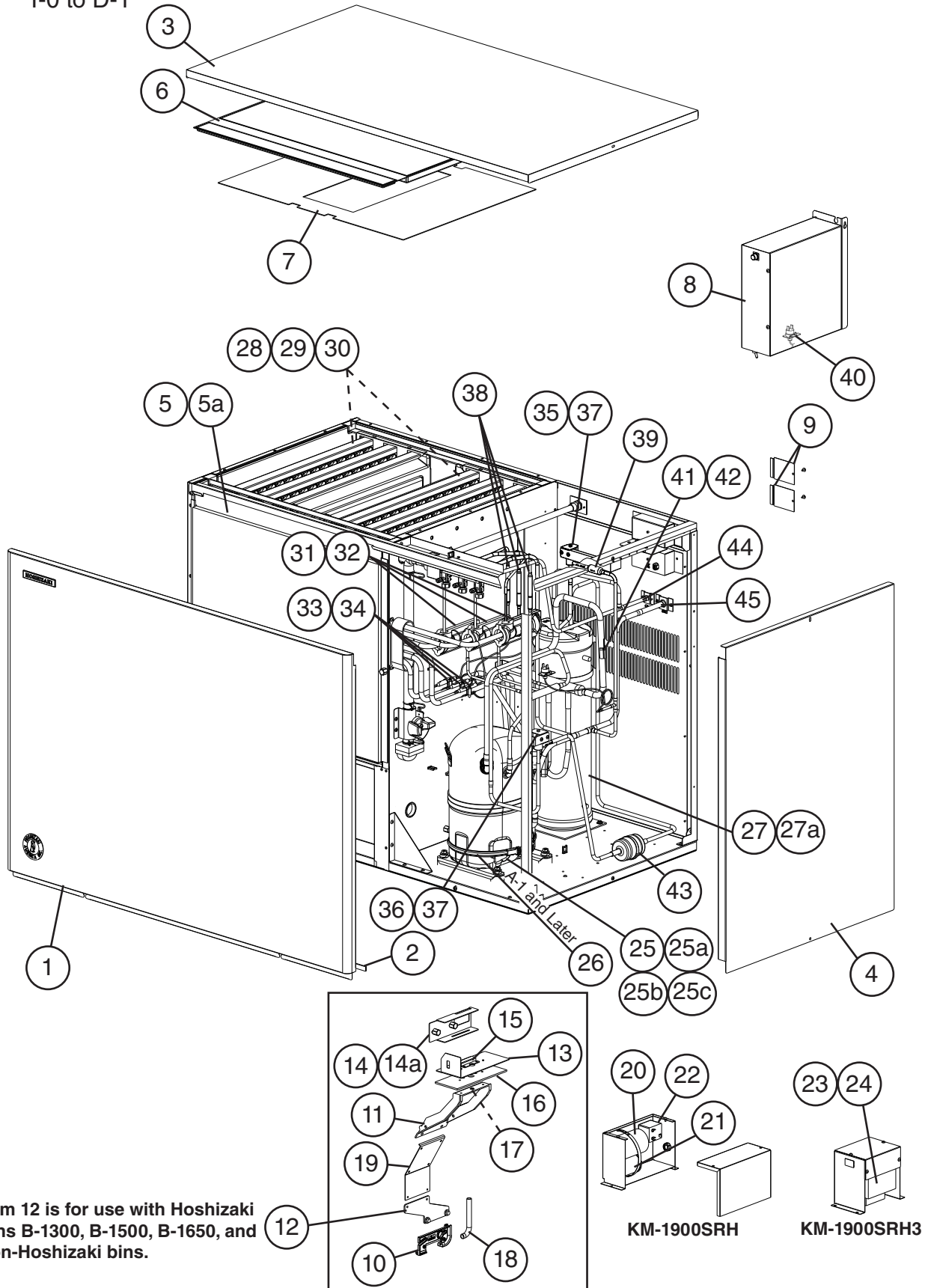


Title: A. Ice Cuber Assembly & Refrigeration Circuit Model: KM-1900SWH/3												
Index No.	Description	Material or Model Number	Part Number	T-0 to D-1	Required Number							
34	Clamp		443461-02	3								
35	Hot Gas Valve Body		4A3978-01	1								
36	Liquid Line Valve Body		4A3276-01	1								
37	Valve Coil		4A3277-01	2								
38	Check Valve		4A1373-01	3								
39	Strainer		441569-02	1								
40	High-Pressure Switch		433441-05	1								
41	Thermistor	L=1050	429006-03	1								
42	Thermistor Holder		438247-01	1								
43	Drier		4A2663-01	1								

# A. Ice Cuber Assembly & Refrigeration Circuit

## KM-1900SRH/3

T-0 to D-1



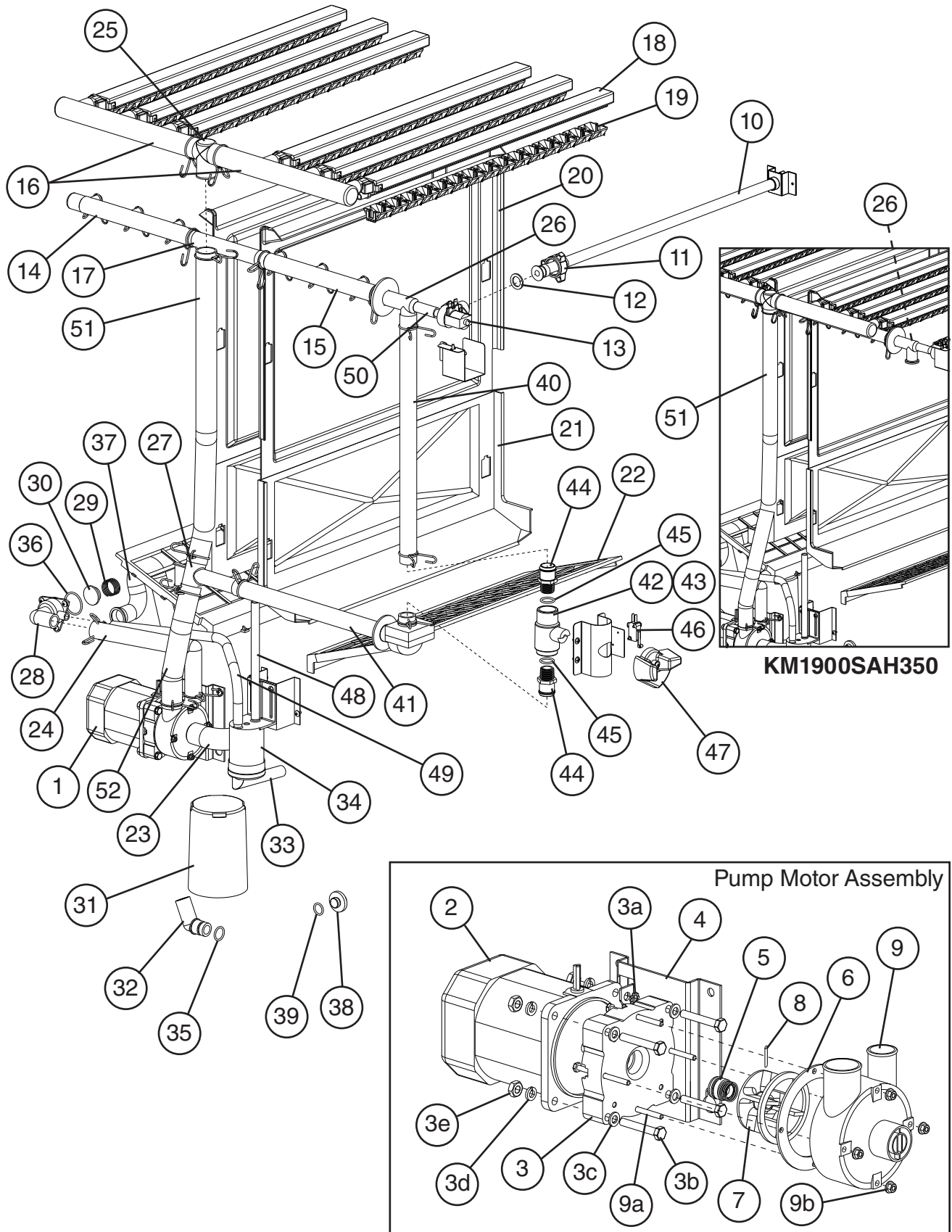
Title: A. Ice Cuber Assembly & Refrigeration Circuit Model: KM-1900SRH/3												
Index No.	Description	Material or Model Number	Part Number	Required Number								
				T-0 to A-0	A-1 to D-1							
<b>Ice Cuber Assembly</b>												
1	Front Panel		3A1838G01	1	1							
2	Gasket	L=1219	4A0808L02	1	1							
3	Top Panel		2A2255-01	1	1							
4	Right Side Panel		215381G02	1	1							
5	Front Insulation		326041G01	1	1							
5a	Thumbscrew		415949G12	1	1							
6	Top Insulation		324216G01	1	1							
7	Spacer		439727-01	1	1							
8	Control Box Cover		3A2386-01	1	1							
9	Junction Box Cover		433410-01	2	2							
10	Bin Control Bulb Holder		3A3903-01	1	1							
11	Bin Control Bulb Holder C	ABS	216340G01	1	1							
12	Bin Control Bulb Holder C	Z Bracket	325845G01	1	1							
13	Bin Control Bulb Holder E		439725-01	1	1							
14	Bin Control Bulb Holder F		328743-01	1	1							
14a	Thumbscrew		415949G12	2	2							
15	Bin Control Bulb Holder G		439726-01	1	1							
16	Spacer		439727-01	1	1							
17	Capillary Ring		425307-01	1	1							
18	Silicone Hose	L=285	773013812	1	1							
19	Bin Control Extension Bracket		3A0408-01	1	1							
20	Start Capacitor	<b>KM-1900SRH</b> 189-227 MFD, 330V	3A0076-12	1	1							
21	Run Capacitor	<b>KM-1900SRH</b> 35MFD, 440V	3A2005-12	1	1							
22	Start Relay (Starter)	<b>KM-1900SRH</b>	4A1107-09	1	1							
23	Main Transformer	<b>KM-1900SRH3</b>	4A0817-01	1	1							
24	Voltage Tap Switch	<b>KM-1900SRH3</b>	4A1477-01	1	1							
<b>Refrigeration Circuit</b>												
25	Compressor (A-1 and later utilize external crankcase heater - item 26)	<b>KM-1900SRH</b>	4A4581-02	1	-							
			4A4581-01		1							
			<b>KM-1900SRH3</b>	4A4582-02	1	-						
				4A4582-01		1						
25a	Spacer		434921-01	4	4							
25b	Grommet		434922-01	4	4							
25c	Hex Head Bolt w/Washer	8x45	437889-01	4	4							
26	Crankcase Heater		434186-01		1							
27	Receiver		440366-01	1	1							
27a	Hex Head Bolt w/Washer (LF)	5x10	7B0130510	3	3							
28	Evaporator Bank (each bank includes 3 of item 29)	HS-008	2A0416G01	2	2							
29	Evaporator Plate	S-0641	103317G02	6	6							
30	Separator Hook		324152-01	8	8							

Title: A. Ice Cuber Assembly & Refrigeration Circuit Model: KM-1900SRH/3												
Index No.	Description	Material or Model Number	Part Number	Required Number								
				T-0 to A-0	A-1 to D-1							
31	Thermostatic Expansion Valve		4A1414-01	3	3							
32	Thermostatic Expansion Valve Cover		3A0944-01	3	3							
33	Thermostatic Expansion Valve Bulb Holder		3A0107-01	3	3							
34	Clamp		443461-02	3	3							
35	Hot Gas Valve Body		4A3978-01	1	1							
36	Liquid Line Valve Body		4A3276-01	1	1							
37	Valve Coil		4A3277-01	2	2							
38	Check Valve		4A1373-01	3	3							
39	Strainer		441569-02	1	1							
40	High-Pressure Switch		433441-07	1	1							
41	Thermistor	L=1050	429006-03	1	1							
42	Thermistor Holder		438247-01	1	1							
43	Drier		4A2663-01	1	1							
44	Liquid Line Coupling		433751G01	1	1							
45	Discharge Line Coupling		434136G01	1	1							

## B. Water Circuit

KM-1900SAH/3, KM1900SAH350, KM-1900SWH/3, KM-1900SRH/3

T-0 to D-1



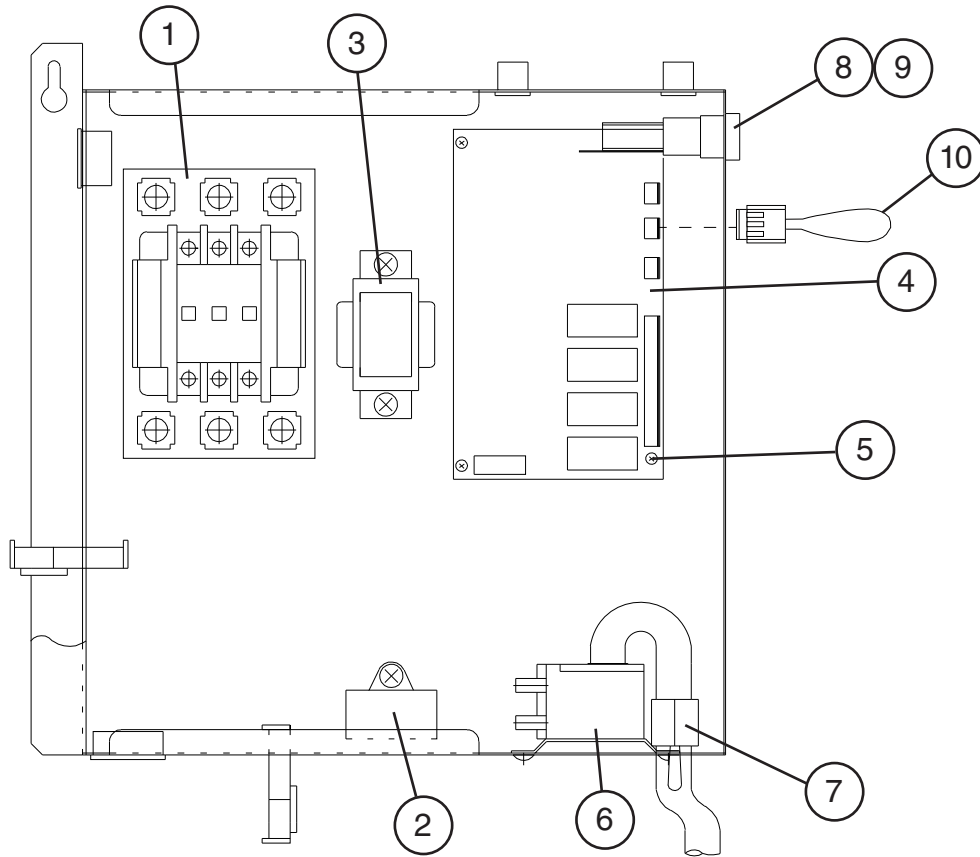
Title: B. Water Circuit Model: KM-1900SAH/3, KM1900SAH350, KM-1900SWH/3, KM-1900SRH/3											
Index No.	Description	Material or Model Number	Part Number	Required Number							
				T-0 to V-1 (L)	V-1 (M) to A-0 or A-1 (L)	A-0 or A-1 (M) to D-1					
1	Pump Motor Assembly (includes items 2 through 9b)	KM-1900SAH/3 KM-1900SWH/3 KM-1900SRH/3 S-0730	215692A03	1	1	1					
		KM1900SAH350 S-0862	215692A04	1	1	1					
2	Pump Motor		2U0106-01	1	1	1					
3	Pump Flange		215662-01	1	1	1					
3a	Tooth Washer	M6, SS	7R22-0600	2	2	2					
3b	Hex Head Bolt	6x40, SS	7B02-0640	4	4	4					
3c	Flat Washer	M6, SS	7W22-0600	4	4	4					
3d	Split Lock Washer	M6, SS	7L22-0600	4	4	4					
3e	Hex Nut	M6, SS	7N12-0600	4	4	4					
4	Pump Motor Bracket		323904-01	1	1	1					
5	Mechanical Seal		4A3820-01	1	1	1					
6	Packing		428547-01	1	1	1					
7	Impeller	KM-1900SAH/3 KM-1900SWH/3 KM-1900SRH/3	436584-01	1	1	1					
		KM1900SAH350	334706G01	1	1	1					
8	Pin		4A0648-01	1	1	1					
9	Pump Housing		213687-01	1	1	1					
9a	Hex Head Bolt	4x55, SS	7B02-0455	4	4	4					
9b	Hex Flange Nut	4, SS	7J02-0400	4	4	4					
10	Water Supply Pipe		4A5216G04	1	1	1					
11	Water Supply Pipe Fitting Nut		468616-01	1	1	1					
12	Rubber Gasket		413854-03	1	1	1					
13	Inlet Water Valve		4A1176-04	1	-						
			4A5251-04		1	1					
14	Distributor Hose A		325738-01	1	1	1					
15	Distributor Hose B		325738-02	1	1	1					
16	Distributor Hose C		325739-01	2	2	2					
17	Joint Pipe		439297-01	1	1	1					
18	Spray Tube		437049G01	6	6	6					
19	Spray Guide		208586-01	18	18	18					
20	Separator A		215046-01	2	2	2					
21	Separator B		2A0100-01	2	2	2					
22	Cube Guide		214243-01	2	2	2					
23	Hose A		435091-01	1	1	1					
24	Hose B		325867-01	1	1	1					
25	Distributor A		439266-01	1	1	1					
26	Distributor B	KM-1900SAH/3 KM-1900SWH/3 KM-1900SRH/3	439239-01	1	1	1					
		KM1900SAH350	4A1175G01	1	1	1					
27	Distributor C	KM-1900SAH/3 KM-1900SWH/3 KM-1900SRH/3	439238-01	1	1	1					
28	Drain Valve Housing		323613-01	1	1	1					

<b>Title: B. Water Circuit Model: KM-1900SAH/3, KM1900SAH350, KM-1900SWH/3, KM-1900SRH/3</b>											
Index No.	Description	Material or Model Number	Part Number	Required Number							
				T-0 to V-1 (L)	V-1 (M) to A-0 or A-1 (L)	A-0 or A-1 (M) to D-1					
29	Spring		322110-01	1	1	1					
30	Valve Seat		433705-01	1	1	1					
31	Overflow Cap		325866-01	1	1	1					
32	Overflow Joint		323923-02	1	1	-					
33	Float Switch Connector		426799-04	1	1	1					
34	Float Switch		4A3624-01	1	1	1					
35	"O" Ring		7611-P018	1	1	-					
36	"O" Ring		7611-G035	1	1	1					
37	Drain Hose		325869-01	1	1	1					
38	Drain Plug		309246-01	1	1	1					
39	"O" Ring		7611-P015	1	1	1					
40	Joint Hose	<b>KM-1900SAH/3</b>	439309-01	1	1	1					
41	Bypass Hose	<b>KM-1900SWH/3</b> <b>KM-1900SRH/3</b>	439237-02	1	1	1					
42	Ball Valve Assembly (includes items 43 through 45)	<b>KM-1900SAH/3</b> <b>KM-1900SWH/3</b> <b>KM-1900SRH/3</b> S-0761	442137A01	1	1	1					
43	Ball Valve		439293-01	1	1	1					
44	Male Adaptor		325826-01	2	2	2					
45	"O" Ring		7611-P018	2	Replaced with Thread Sealant Tape						
46	Microswitch	<b>KM-1900SAH/3</b>	4A2546-01	1	1	1					
47	Handle	<b>KM-1900SWH/3</b> <b>KM-1900SRH/3</b>	215383-01	1	1	1					
48	Silicone Hose	L= 190	773013812	1	1	1					
49	Silicone Hose	L= 430	773013896	1	1	1					
50	Vinyl Hose	L=40	7716-1216	1	1	1					
51	Vinyl Hose	<b>KM-1900SAH/3</b> <b>KM-1900SWH/3</b> <b>KM-1900SRH/3</b> L=550	7716-2732	1	1	1					
		<b>KM1900SAH350</b> L=820	7716-2732	1	1	1					
52	Vinyl Hose	<b>KM-1900SAH/3</b> <b>KM-1900SWH/3</b> <b>KM-1900SRH/3</b> L=230	7716-2732	1	1	1					
<b>Hose Clamps</b>											
	Hose Clamp (25mm, SS)	<b>KM-1900SAH/3</b> <b>KM-1900SWH/3</b> <b>KM-1900SRH/3</b>	427443-03	9	9	9					
		<b>KM1900SAH350</b>	427443-03	5	5	5					
	Hose Clamp (13.5mm, SS)		427443-07	6	6	6					
	Hose Clamp (32mm, SS)	<b>KM-1900SAH/3</b> <b>KM-1900SWH/3</b> <b>KM-1900SRH/3</b>	427443-09	6	6	6					
		<b>KM1900SAH350</b>	427443-09	4	4	4					

### C. Control Box Assembly

KM-1900SAH/3, KM1900SAH350, KM-1900SWH/3, KM-1900SRH/3

T-0 to D-1



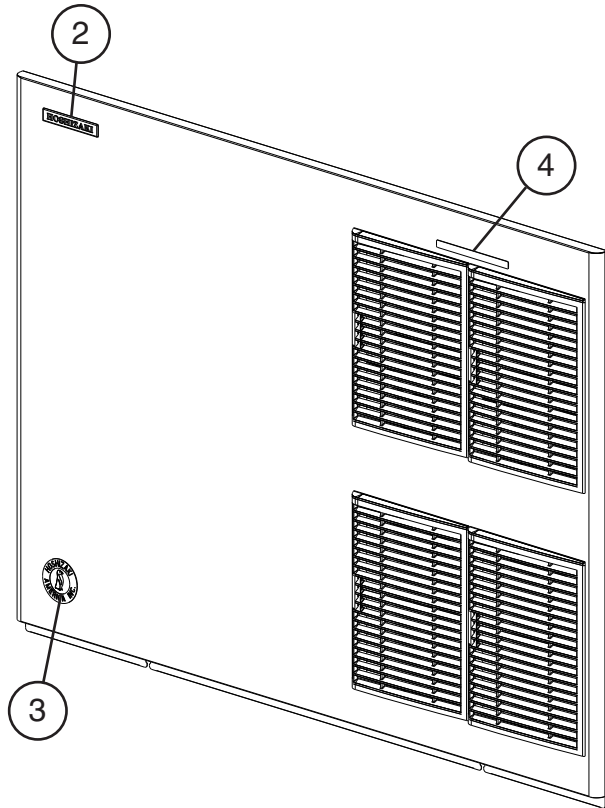
Title: C. Control Box Assembly		Model: KM-1900SAH/3, KM1900SAH350, KM-1900SWH/3, KM-1900SRH/3		Required Number							
Index No.	Description	Material or Model Number	Part Number	T-0 to D-0	D-1						
				1	Magnetic Contactor	<b>KM-1900SAH/3</b> <b>KM1900SAH350</b> <b>KM-1900SWH/3</b>	4A0794-02	1	1		
		<b>KM-1900SRH/3</b>	4A0794-01								
2	Pump Motor Capacitor	<b>KM-1900SAH/3</b> <b>KM-1900SWH/3</b> <b>KM-1900SRH/3</b> 10MFD, 250VAC	443192-01	1	1						
		<b>KM1900SAH350</b> 15MFD, 240VAC	439705-01	1	1						
3	Control Transformer		3A0172-01	1	1						
4	"E" Control Board		2A1410-01	1	-						
	"G" Control Board		2A3792-01		1						
5	Control Board Support		4A0336-03	4	4						
6	Bin Control Thermostat		4A2879-02	1	1						
7	Control Switch		443119-01	1	1						
8	Fuse Holder		4A5443-01	1	1						
9	Fuse	10A, 250V	4A0893-07	2	2						
10	K-4 Jumper		4A4883G01		1						



## D. Accessories & Labels

KM-1900SAH/3, KM1900SAH350, KM-1900SWH/3, KM-1900SRH/3

T-0 to D-1



Title: D. Accessories, Labels, & Packaging Model: KM-1900SAH/3, KM1900SAH350, KM-1900SWH/3, KM-1900SRH/3													
Index No.	Description	Material or Model Number	Part Number	Required Number									
				T-0 to D-1									
1	Universal Brace		4A0363-01	2									
1a	Hex Bolt	5x12, SS	7B02-0512	4									
2	Hoshizaki Emblem Label		4A0560-01	1									
3	Penguin Label		4A0526-01	1									
4	Air Filter Label	<b>KM-1900SAH/3</b> <b>KM1900SAH350</b>	426177-01	1									