

Hoshizaki America, Inc.

Stackable Crescent Cuber

Models

KM-160ISAH/3

KM-160ISWH/3

KM-160ISRH/3



“A Superior Degree
of Reliability”

www.hoshizaki.com

PARTS LIST



Number: 71249
Issued: 8-23-2006
Revised: 04-10-2013

CONTENTS

Auxiliary Codes.....	3
Note About Ordering Parts	3
A. Ice Cuber Assembly & Refrigeration Circuit	4
KM-1601SAH/3.....	4
KM-1601SWH/3.....	7
KM-1601SRH/3.....	10
B. Water Circuit	13
C. Control Box Assembly	16
KM-1601SAH.....	16
KM-1601SAH3, KM-1601SWH/3, KM-1601SRH/3	17
D. Accessories and Labels.....	18

Auxiliary Codes

KM-1601SAH	A-0	April 2011	KM-1601SAH3	A-0	April 2011
	B-0	March 2012		B-0	June 2011
	C-0	January 2013		C-0	February 2013
KM-1601SWH	R-0	May 2006	KM-1601SWH3	R-0	May 2006
	R-1	July 2006		S-1	August 2007
	S-1	July 2007		S-2	October 2007
	S-2	October 2007		T-0	January 2008
	T-0	April 2008		U-0	June 2009
	U-0	January 2009		V-0	February 2010
	V-0	January 2010		V-1	July 2010
	V-1	July 2010		A-0	January 2011
	A-0	March 2011		B-0	February 2012
	B-0	February 2012		C-0	January 2013
	C-0	February 2013			
	KM-1601SRH	R-0		April 2006	KM-1601SRH3
R-1		August 2006	R-1	July 2006	
S-1		January 2007	S-1	January 2007	
S-2		December 2007	S-2	December 2007	
T-0		February 2008	T-0	January 2008	
U-0		January 2009	U-0	January 2009	
V-0		January 2010	V-0	January 2010	
V-1		August 2010	V-1	July 2010	
A-0		January 2011	A-0	January 2011	
A-1		September 2011	A-1	October 2011	
B-0		January 2012	B-0	January 2012	
B-1		December 2012	C-0	January 2013	
C-0	January 2013				

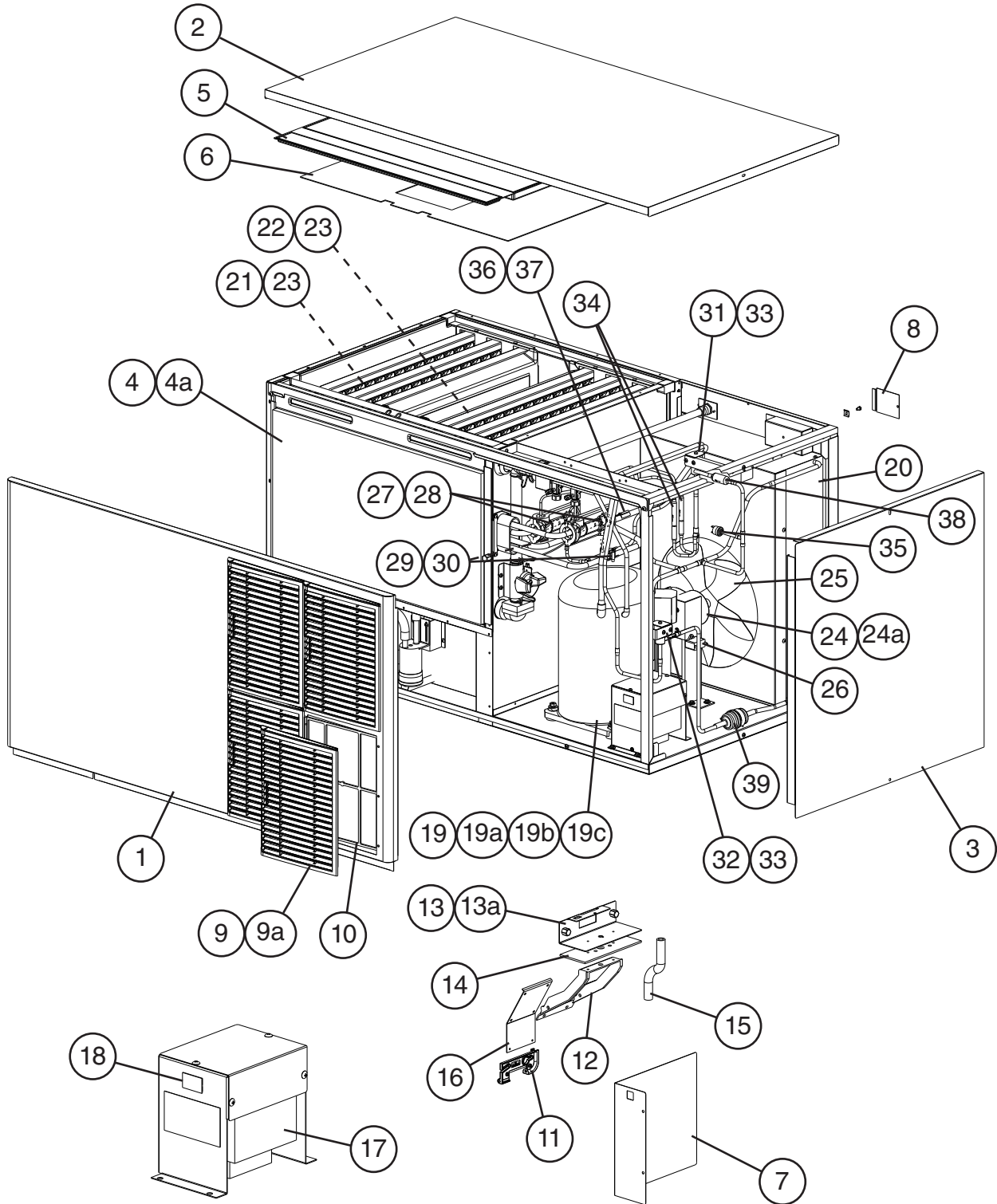
Auxiliary Code Breakdown

The auxiliary code is the first two characters in the serial number. The first character indicates the year. Years progress or regress in alphabetical order. The series runs from "A" through "V" and the letters "I" and "O" are skipped. The second character indicates significant part changes within a year. Base is "0" and this number advances for each change. In cases where there is a letter in parentheses, this designates the month. This is the last character in the serial number. The series runs from "(A)" through "(M)" and the letter "(I)" is skipped. This designation is only included when identifying a parts change within an auxiliary code.

Note About Ordering Parts

Most assemblies cannot be ordered as complete units; parts in the assemblies generally must be ordered separately.

A. Ice Cuber Assembly & Refrigeration Circuit
KM-1601SAH/3
 A-0 to C-0



Main Transformer Box Assembly
KM-1601SAH3

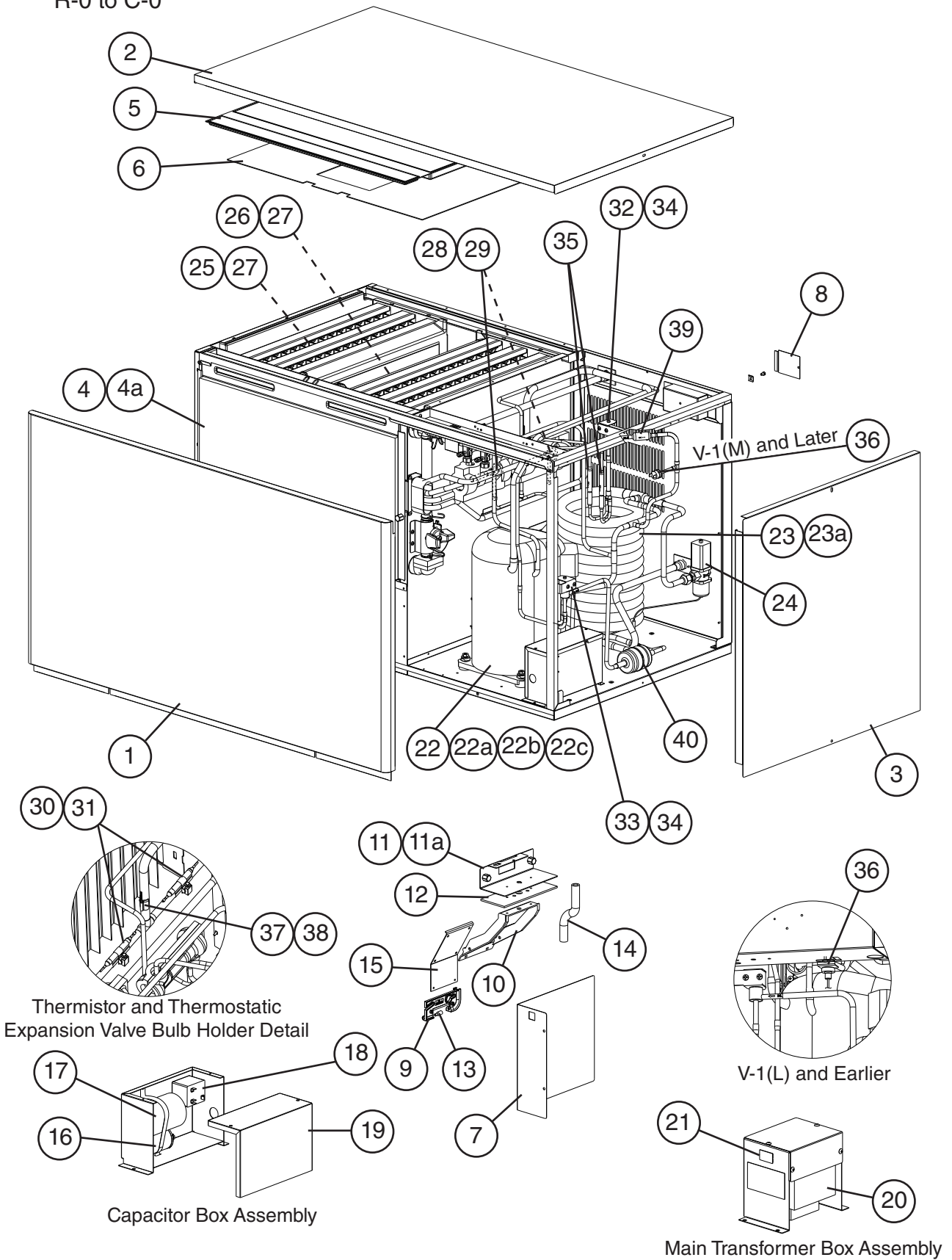
Title: A. Ice Cuber Assembly & Refrigeration Circuit Model: KM-1601SAH/3											
Index No.	Description	Material or Model Number	Part Number	A-0 to C-0	Required Number						
Ice Cuber Assembly											
1	Front Panel		2A2224-02	1							
2	Top Panel		2A2255-01	1							
3	Right Side Panel		2A2226G01	1							
4	Front Insulation		324215G01	1							
4a	Thumbscrew		415949G12	1							
5	Top Insulation		324216G01	1							
6	Spacer		324321-01	1							
7	Control Box Cover		3A2386-01	1							
8	Junction Box Cover		433410-01	1							
9	Louver		1A0548-01	4							
9a	Push Retainer		4A2414-01	12							
10	Air Filter		2A2063G01	4							
11	Bin Control Bulb Holder		3A3903-01	1							
12	Bin Control Bulb Holder C		216340G01	1							
13	Bin Control Bulb Holder D		328742-01	1							
13a	Thumbscrew		415949G12	2							
14	Spacer		439727-01	1							
15	Silicone Hose	L=285	7730I3812	1							
16	Bin Control Extension Bracket		3A0408-01	1							
17	Main Transformer	KM-1601SAH3	4A0817-01	1							
18	Voltage Tap Switch	KM-1601SAH3	4A1477-01	1							
Refrigeration Circuit											
19	Compressor	KM-1601SAH	4A2334-01	1							
		KM-1601SAH3	4A2330-01	1							
19a	Spacer		434921-01	4							
19b	Grommet		434922-01	4							
19c	Bolt	8x45	437889-01	4							
20	Condenser		213621-01	1							
21	Left Evaporator Bank (3 Plates)	HS-0208	2A0414G02	1							
22	Right Evaporator Bank (3 Plates)	HS-0209	2A0415G02	1							
23	Separator Hook		324152-01	8							
24	Fan Motor		4A3158-01	1							
24a	Self-Locking Nut	8-32	7N2110832	4							
25	Fan Blade		4A4144-01	1							
26	Fan Motor Capacitor	5MFD, 250VAC	443192-02	1							
27	Thermostatic Expansion Valve		4A1482-01	2							
28	Thermostatic Expansion Valve Cover		3A0944-01	2							
29	Thermostatic Expansion Valve Bulb Holder		3A0107-01	2							
30	Clamp		443461-02	2							
31	Hot Gas Valve Body		4A3978-01	1							
32	Liquid Line Valve Body		4A3276-01	1							
33	Valve Coil		4A3277-01	2							

Title: A. Ice Cuber Assembly & Refrigeration Circuit Model: KM-1601SAH/3												
Index No.	Description	Material or Model Number	Part Number	Required Number								
				A-0 to C-0								
34	Check Valve		4A1373-01	2								
35	High-Pressure Switch		463180-04	1								
36	Thermistor		429006-03	1								
37	Thermistor Holder		427430-01	1								
38	Strainer		441569-02	1								
39	Drier		4A2666-01	1								

A. Ice Cuber Assembly & Refrigeration Circuit

KM-1601SWH/3

R-0 to C-0



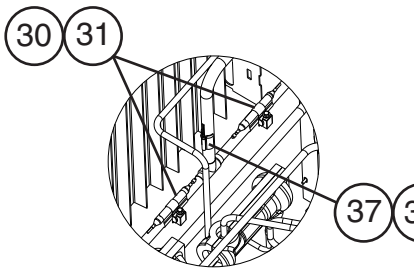
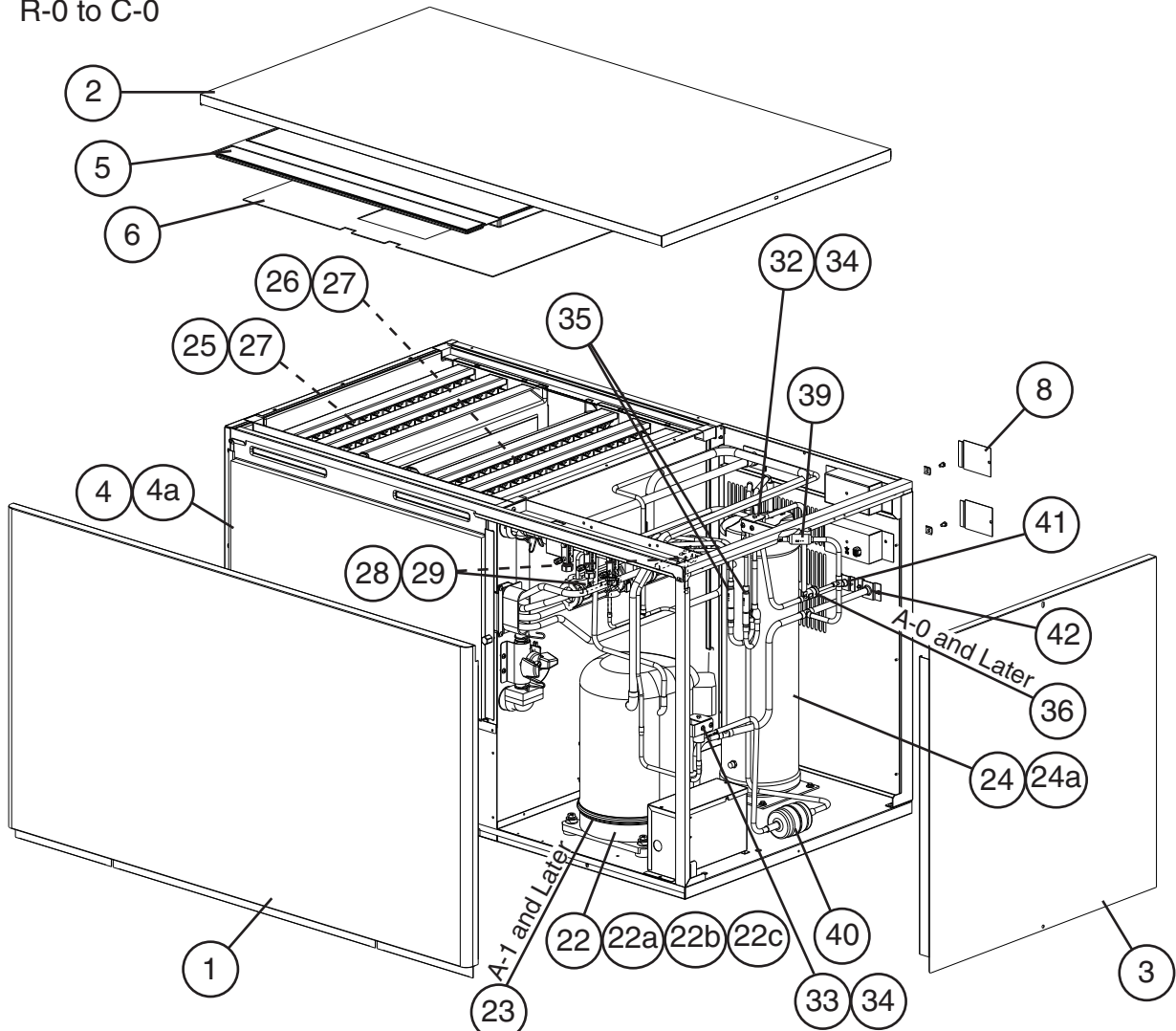
Title: A. Ice Cuber Assembly & Refrigeration Circuit Model: KM-1601SWH/3											
Index No.	Description	Material or Model Number	Part Number	Required Number							
				R-0	S-1 to V-1 (L)	V-1 (M) to C-0					
Ice Cuber Assembly											
1	Front Panel		3A1969G01	1	1	1					
2	Top Panel		2A2255-01	1	1	1					
3	Right Side Panel		2A2226G01	1	1	1					
4	Front Insulation		324215G01	1	1	1					
4a	Thumbscrew		415949G12	1	1	1					
5	Top Insulation		324216G01	1	1	1					
6	Spacer		324321-01	1	1	1					
7	Control Box Cover		3A2386-01	1	1	1					
8	Junction Box Cover		433410-01	1	1	1					
9	Bin Control Bulb Holder		328919-01	1	-						
			3A3903-01		1	1					
10	Bin Control Bulb Holder C		216340G01	1	1	1					
11	Bin Control Bulb Holder D		328742-01	1	1	1					
11a	Thumbscrew		415949G12	1	2	2					
12	Spacer		439727-01	1	1	1					
13	Spacer		443545-01	1	-						
14	Silicone Hose	L=285	773013812	1	1	1					
15	Bin Control Extension Bracket		3A0408-01	1	1	1					
16	Run Capacitor	KM-1601SWH 35MFD, 370VAC	3A2005-05	1	1	1					
17	Start Capacitor	KM-1601SWH 145-174MFD, 250VAC	3A0076-01	1	1	1					
18	Start Relay	KM-1601SWH	4A1107-09	1	1	1					
19	Capacitor Box Cover	KM-1601SWH	326125-01	1	1	1					
20	Main Transformer	KM-1601SWH3	4A0817-01	1	1	1					
21	Voltage Tap Switch	KM-1601SWH3	4A1477-01	1	1	1					
Refrigeration Circuit											
22	Compressor	KM-1601SWH	4A2334-01	1	1	1					
		KM-1601SWH3	4A2330-01	1	1	1					
22a	Spacer		434921-01	4	4	4					
22b	Grommet		434922-01	4	4	4					
22c	Bolt	8x45	437889-01	4	4	4					
23	Condenser	HS-0164	2A2359G05	1	1	1					
23a	Hex Head Bolt w/Washer	5x10, SS	7B0230510	2	2	2					
24	Water Regulating Valve		4A0911-07	1	1	1					
25	Left Evaporator Bank (3 Plates)	HS-0208	2A0414G02	1	1	1					
26	Right Evaporator Bank (3 Plates)	HS-0209	2A0415G02	1	1	1					
27	Separator Hook		324152-01	8	8	8					
28	Thermostatic Expansion Valve		4A1482-01	2	2	2					
29	Thermostatic Expansion Valve Cover		3A0944-01	2	2	2					

Title: A. Ice Cuber Assembly & Refrigeration Circuit Model: KM-1601SWH/3											
Index No.	Description	Material or Model Number	Part Number	Required Number							
				R-0	S-1 to V-1 (L)	V-1 (M) to C-0					
30	Thermostatic Expansion Valve Bulb Holder		3A0107-01	2	2	2					
31	Clamp		443461-02	2	2	2					
32	Hot Gas Valve Body		440352-01	1	-						
			4A3978-01		1	1					
33	Liquid Line Valve Body		440352-01	1	-						
			4A3276-01		1	1					
34	Valve Coil		440353-01	2	-						
			4A3277-01		2	2					
35	Check Valve		4A1373-01	2	2	2					
36	High-Pressure Switch		433441-05	1	1	-					
			463180-05			1					
37	Thermistor		429006-03	1	1	1					
38	Thermistor Holder		438247-01	1	1	1					
39	Strainer		441569-02	1	1	1					
40	Drier		4A2663-01	1	1	1					

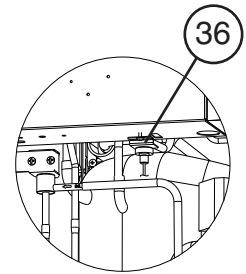
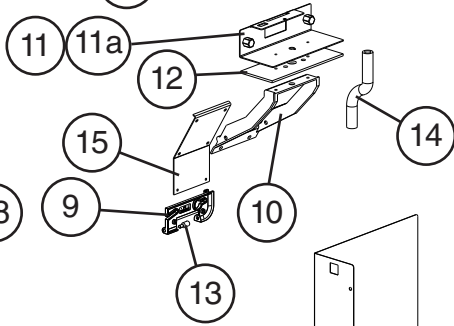
A. Ice Cuber Assembly & Refrigeration Circuit

KM-1601SRH/3

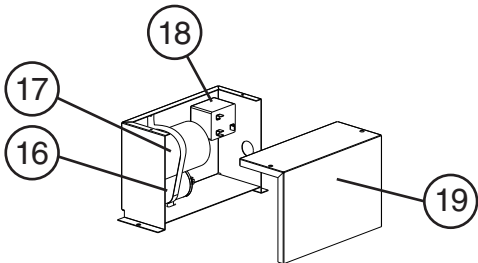
R-0 to C-0



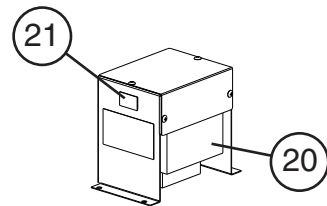
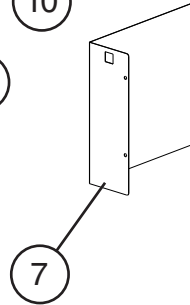
Thermistor and Thermostatic
Expansion Valve Bulb Holder Detail



V-1 and Earlier



Capacitor Box Assembly



Main Transformer Box Assembly

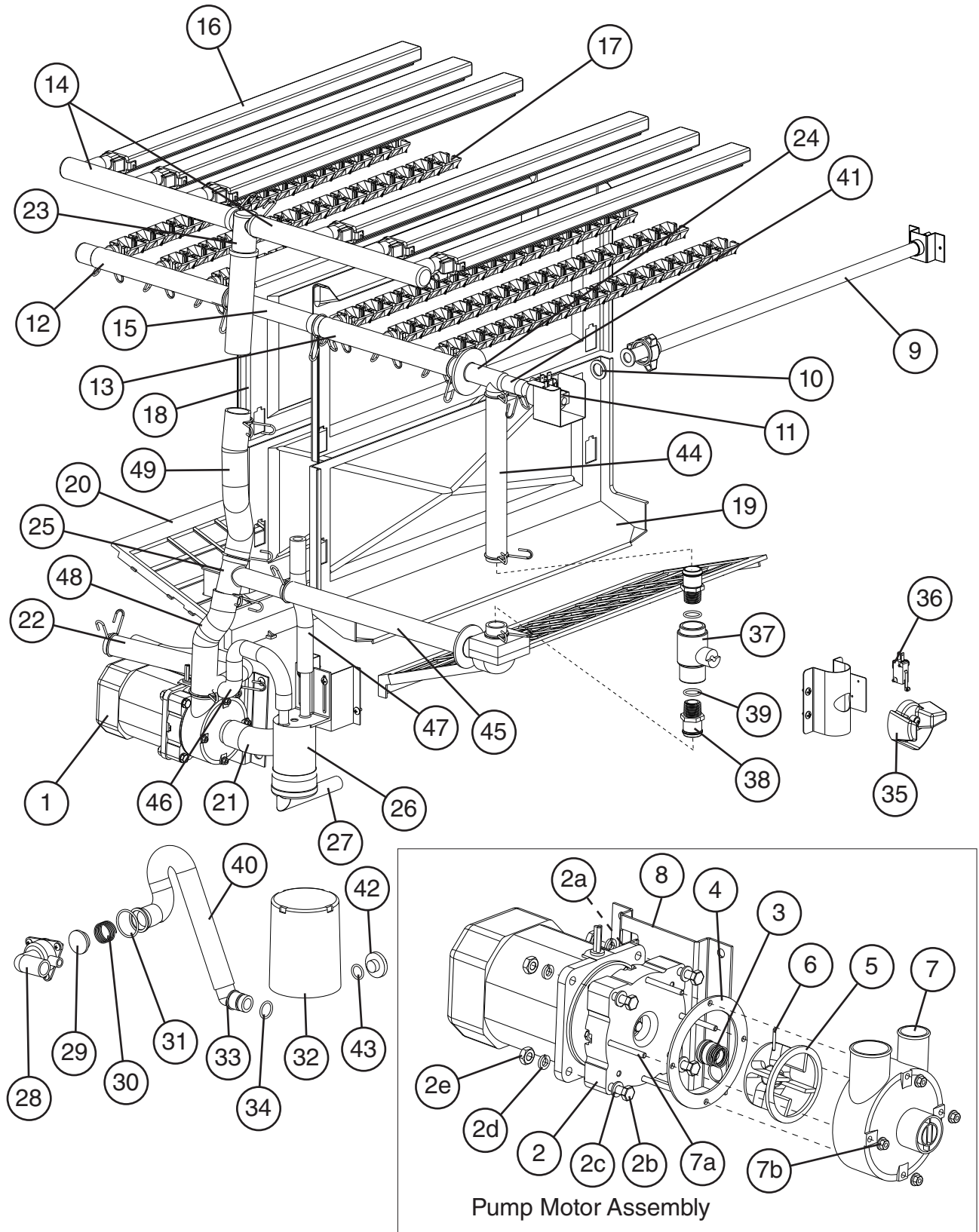
Title: A. Ice Cuber Assembly & Refrigeration Circuit Model: KM-1601SRH/3													
Index No.	Description	Material or Model Number	Part Number	Required Number									
				R-0	R-1	S-1 to V-1	A-0	A-1 to C-0					
Ice Cuber Assembly													
1	Front Panel		3A1969G01	1	1	1	1	1					
2	Top Panel		2A2255-01	1	1	1	1	1					
3	Right Side Panel		2A2226G01	1	1	1	1	1					
4	Front Insulation		324215G01	1	1	1	1	1					
4a	Thumbscrew		415949G12	1	1	1	1	1					
5	Top Insulation		324216G01	1	1	1	1	1					
6	Spacer		324321-01	1	1	1	1	1					
7	Control Box Cover		3A2386-01	1	1	1	1	1					
8	Junction Box Cover		433410-01	2	2	2	2	2					
9	Bin Control Bulb Holder		328919-01	1	1	-							
			3A3903-01			1	1	1					
10	Bin Control Bulb Holder C		216340G01	1	1	1	1	1					
11	Bin Control Bulb Holder D		328742-01	1	1	1	1	1					
11a	Thumbscrew		415949G12	1	1	2	2	2					
12	Spacer		439727-01	1	1	1	1	1					
13	Spacer		443545-01	1	1	-							
14	Silicone Hose	L=285	7730I3812	1	1	1	1	1					
15	Bin Control Extension Bracket		3A0408-01	1	1	1	1	1					
16	Run Capacitor	KM-1601SRH 35MFD, 370VAC	3A2005-05	1	1	1	1	1					
17	Start Capacitor	KM-1601SRH 145-174MFD, 250VAC	3A0076-01	1	1	1	1	1					
18	Start Relay	KM-1601SRH	4A1107-09	1	1	1	1	1					
19	Capacitor Box Cover	KM-1601SRH	326125-01	1	1	1	1	1					
20	Main Transformer	KM-1601SRH3	4A0817-01	1	1	1	1	1					
21	Voltage Tap Switch	KM-1601SRH3	4A1477-01	1	1	1	1	1					
Refrigeration Circuit													
22	Compressor (A-1 and later utilize external crankcase heater - item 23)	KM-1601SRH	4A2334-02	1	1	1	1	-					
			4A2334-01					1					
			KM-1601SRH3	4A2330-02	1	1	1	1	-				
				4A2330-01					1				
22a	Spacer		434921-01	4	4	4	4	4					
22b	Grommet		434922-01	4	4	4	4	4					
22c	Bolt	8x45	437889-01	4	4	4	4	4					
23	Crankcase Heater		4A5397-02					1					
24	Receiver		440366-01	1	1	1	1	1					
24a	Hex Head Bolt w/Washer	5x10, SS	7B0230510	3	3	3	3	3					
25	Left Evaporator Bank (3 Plates)	HS-0208	2A0414G02	1	1	1	1	1					
26	Right Evaporator Bank (3 Plates)	HS-0209	2A0415G02	1	1	1	1	1					
27	Separator Hook		324152-01	8	8	8	8	8					

Title: A. Ice Cuber Assembly & Refrigeration Circuit Model: KM-1601SRH/3												
Index No.	Description	Material or Model Number	Part Number	Required Number								
				R-0	R-1	S-1 to V-1	A-0	A-1 to C-0				
28	Thermostatic Expansion Valve		4A1482-01	2	2	2	2	2				
29	Thermostatic Expansion Valve Cover		3A0944-01	2	2	2	2	2				
30	Thermostatic Expansion Valve Bulb Holder		3A0107-01	2	2	2	2	2				
31	Clamp		443461-02	2	2	2	2	2				
32	Hot Gas Valve Body		440352-01	1	-							
			4A3978-01		1	1	1	1				
33	Liquid Line Valve Body		440352-01	1	-							
			4A3276-01		1	1	1	1				
34	Valve Coil		440353-01	2	-							
			4A3277-01		2	2	2	2				
35	Check Valve		4A2054-01	2	2	2	2	2				
36	High-Pressure Switch		433441-07	1	1	1	-					
			463180-04				1	1				
37	Thermistor		429006-03	1	1	1	1	1				
38	Thermistor Holder		438247-01	1	1	1	1	1				
39	Strainer		441569-02	1	1	1	1	1				
40	Drier		4A2663-01	1	1	1	1	1				
41	Liquid Line Coupling		433751G01	1	1	1	1	1				
42	Discharge Line Coupling		434072-01	1	1	1	1	1				

B. Water Circuit

KM-1601SAH/3, KM-1601SWH/3, KM-1601SRH/3

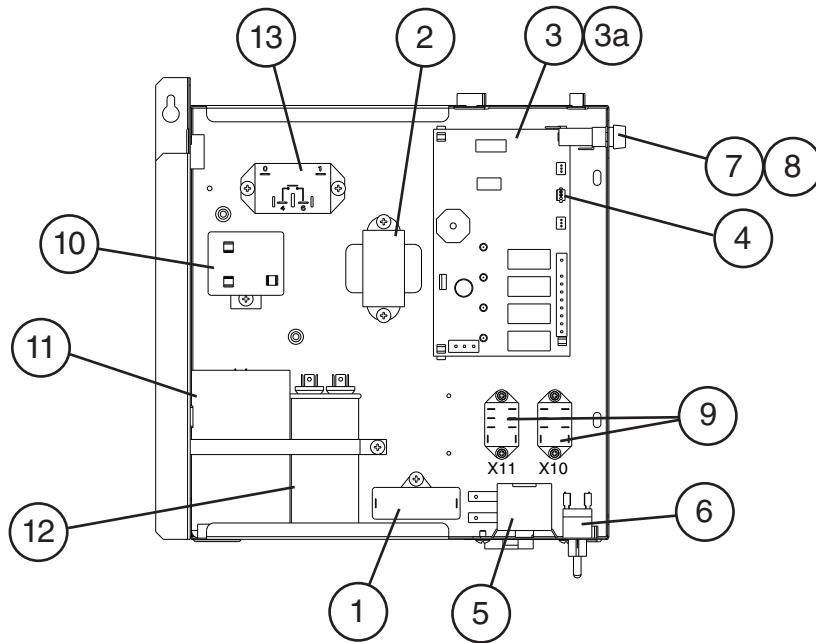
R-0 to C-0



Title: B. Water Circuit Model: KM-1601SAH/3, KM-1601SWH/3, KM-1601SRH/3												
Index No.	Description	Material or Model Number	Part Number	Required Number								
				R-0 R-1	S-1	S-2 to V-1 (L)	V-1 (M)	A-0 to C-0				
1	Pump Motor Assembly (includes items 2 through 8)	S-0730	215692A03	1	1	1	1	1				
2	Pump Flange		215662-01	1	1	1	1	1				
2a	Tooth Washer	M6, SS	7R22-0600	2	2	2	2	2				
2b	Hex Head Bolt	6x40, SS	7B02-0640	4	4	4	4	4				
2c	Flat Washer	M6, SS	7W22-0600	4	4	4	4	4				
2d	Split Lock Washer	M6, SS	7L22-0600	4	4	4	4	4				
2e	Hex Nut	M6, SS	7N12-0600	4	4	4	4	4				
3	Mechanical Seal		4A3820-01	1	1	1	1	1				
4	Packing		428547-01	1	1	1	1	1				
5	Impeller		436584-01	1	1	1	1	1				
6	Pin		4A0648-01	1	1	1	1	1				
7	Pump Housing		213687-01	1	1	1	1	1				
7a	Hex Head Bolt	4x55, SS	7B02-0455	4	4	4	4	4				
7b	Hex Flange Nut	M4, SS	7J02-0400	4	4	4	4	4				
8	Pump Motor Bracket		323904-01	1	1	1	1	1				
9	Water Supply Pipe		4A5216G04	1	1	1	1	1				
10	Rubber Gasket		413854-03	1	1	1	1	1				
11	Inlet Water Valve	KM-1601SAH/3	4A5251-02					1				
		KM-1601SWH/3	3U0111-02	1	1	-						
			4A1176-04			1	-					
			4A5251-04					1	1			
		KM-1601SRH/3 * Use 3U0111-01 for replacement in R-0 to S-1. See Service Manual for dip switch settings.	3U0111-02*	1	-							
			3U0111-01		1	-						
4A1176-04				1	-							
		4A5251-04					1	1				
12	Distributor Hose A		325738-01	1	1	1	1	1				
13	Distributor Hose B		325738-02	1	1	1	1	1				
14	Distributor Hose C		323985-01	2	2	2	2	2				
15	Joint Pipe		439297-01	1	1	1	1	1				
16	Spray Tube		437049G01	6	6	6	6	6				
17	Spray Guide		208586-01	18	18	18	18	18				
18	Separator A		213622-01	2	2	2	2	2				
19	Separator B		2A0100-01	2	2	2	2	2				
20	Cube Guide		214243-01	2	2	2	2	2				
21	Hose A		435091-01	1	1	1	1	1				
22	Hose B		436599-01	1	1	1	1	1				
23	Distributor		438276G01	1	1	1	1	1				
24	Distributor B		439239-01	1	1	1	1	1				
25	Distributor C		439238-01	1	1	1	1	1				
26	Float Switch		4A3624-01	1	1	1	1	1				
27	Float Switch Connector		426799-04	1	1	1	1	1				
28	Drain Valve Housing		323613-01	1	1	1	1	1				

Title: B. Water Circuit Model: KM-1601SAH/3, KM-1601SWH/3, KM-1601SRH/3												
Index No.	Description	Material or Model Number	Part Number	Required Number								
				R-0 R-1	S-1	S-2 to V-1 (L)	V-1 (M)	A-0 to C-0				
29	Drain Valve Seat		433705-01	1	1	1	1	1				
30	Drain Valve Spring		322110-01	1	1	1	1	1				
31	Drain Valve "O" Ring		7611-G035	1	1	1	1	1				
32	Overflow Cap		323978-01	1	1	1	1	1				
33	Overflow Joint		323923-02	1	1	1	1	-				
34	"O" Ring		7611-P018	1	1	1	1	-				
35	Cleaning Valve Handle		215383-01	1	1	1	1	1				
36	Cleaning Valve Microswitch		4A2546-01	1	1	1	1	1				
37	Cleaning Valve Ball Valve		439293-01	1	1	1	1	1				
38	Cleaning Valve Male Adaptor		325826-01	2	2	2	2	2				
39	Cleaning Valve "O" Ring		7611-P018	2	2	2	2	-	Replaced with thread sealant tape.			
40	Drain Hose		324757-01	1	1	1	1	1				
41	Joint Hose		439296-01	1	1	1	1	1				
42	Drain Plug		309246-01	1	1	1	1	1				
43	Drain Plug "O" Ring		7611-P015	1	1	1	1	1				
44	Joint Hose		439309-02	1	1	1	1	1				
45	Bypass Hose		439237-02	1	1	1	1	1				
46	Silicone Hose	L=390	7730I3896	1	1	1	1	1				
47	Silicone Hose	L=140	7730I3812	1	1	1	1	1				
48	Vinyl Hose	L=170	7716-2732	1	1	1	1	1				
49	Vinyl Hose	L=230	7716-2732	1	1	1	1	1				
Hose Clamps												
	Hose Clamp	13.5 mm, SS	427443-07	6	6	6	6	6				
	Hose Clamp	16.5 mm, SS	427443-04	1	1	1	1	1				
	Hose Clamp	25 mm, SS	427443-03	11	11	11	11	11				
	Hose Clamp	32 mm, SS	427443-09	4	4	4	4	4				

C. Control Box Assembly
KM-1601SAH
 A-0 to C-0

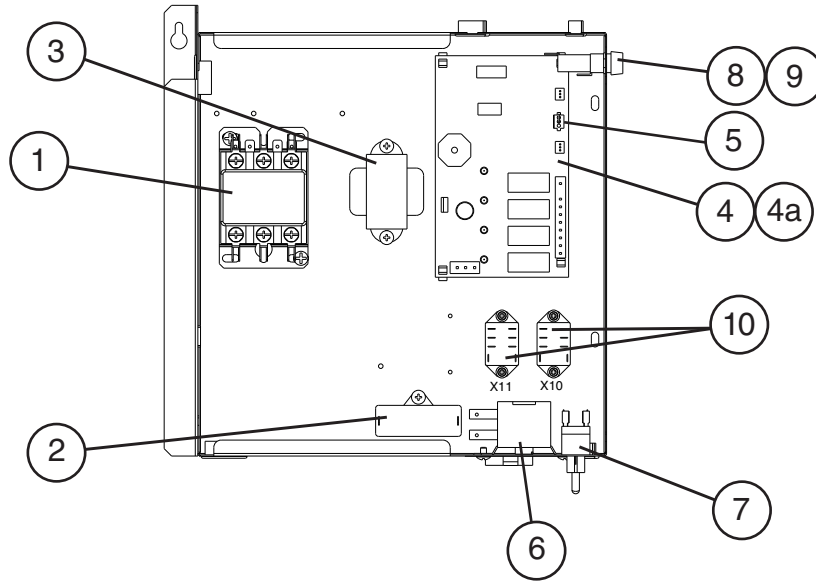


Title: C. Control Box Assembly Model: KM-1601SAH					Required Number											
Index No.	Description	Material or Model Number	Part Number	A-0 to C-0												
1	Pump Motor Capacitor	10MFD, 250VAC	443192-01	1												
2	Control Transformer		3A0172-01	1												
3	"G" Control Board		2A3792-01	1												
3a	Board Support		4A0336-03	4												
4	K4 Jumper		4A4883G01	1												
5	Bin Control Thermostat		4A2879-02	1												
6	Control Switch		443119-01	1												
7	Fuse Holder		4A5443-01	1												
8	Fuse	10A, 250VAC	4A0893-07	1												
9	Harvest Pump Timer Relays		406132-07	2												
10	Start Relay		4A1107-09	1												
11	Start Capacitor	145-175MFD 250VAC	3A0076-01	1												
12	Run Capacitor	35MFD, 370VAC	3A2005-05	1												
13	Compressor Relay		4A3140-01	1												

C. Control Box Assembly

KM-1601SAH3, KM-1601SWH/3, KM-1601SRH/3

R-0 to C-0

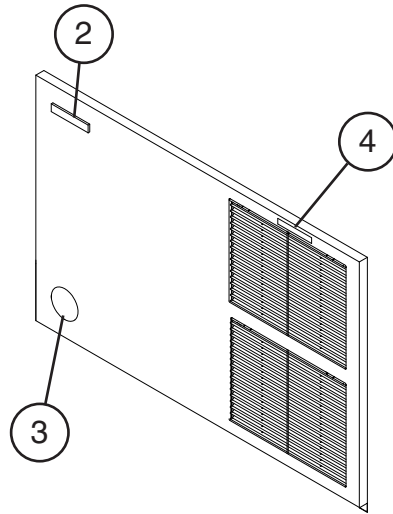


Title: C. Control Box Assembly Model: KM-1601SAH3, KM-1601SWH/3, KM-1601SRH/3										
Index No.	Description	Material or Model Number	Part Number	Required Number						
				R-0 to V-1	A-0 to B-0	B-1 C-0				
1	Magnetic Contactor	KM-1601SAH3	4A0794-02	1	1	1				
		KM-1601SWH/3								
		KM-1601SRH/3	4A0794-01	1	1	1				
2	Pump Motor Capacitor	10MFD, 250VAC	443192-01	1	1	1				
3	Control Transformer		3A0172-01	1	1	1				
4	"G" Control Board	KM-1601SAH3	2A3792-01		1	1				
	"E" Control Board	KM-1601SWH/3 KM-1601SRH/3	2A1410-01	1	1	-				
	"G" Control Board	KM-1601SWH/3 KM-1601SRH/3	2A3792-01			1				
4a	Board Support		4A0336-03	4	4	4				
5	K4 Jumper		4A4883G01	1	1	1				
6	Bin Control Thermostat		4A2879-02	1	1	1				
7	Control Switch		443119-01	1	1	1				
8	Fuse Holder		4A5443-01	1	1	1				
9	Fuse	10A, 250VAC	4A0893-07	1	1	1				
10	Harvest Pump Timer Relays	KM-1601SAH3	406132-07		2	2				

D. Accessories and Labels

KM-1601SAH/3, KM-1601SWH/3, KM-1601SRH/3

R-0 to C-0



Title: D. Accessories and Labels Model: KM-1601SAH/3, KM-1601SWH/3, KM-1601SRH/3										
Index No.	Description	Material or Model Number	Part Number	Required Number						
				R-0 to C-0						
1	Universal Brace		4A0363-01	2						
1a	Hex Head Bolt	5x12, SS	7B02-0512	2						
2	HOSHIZAKI Emblem Label		4A0560-01	1						
3	Penguin Label		4A0526-01	1						
4	Air Filter Label	KM-1601SAH/3	426177-01	1						