

NO. 10DN-2396  
ISSUED: MAR. 2001  
REVISED: JUL. 2008  
SERVICE INFORMATION  
: -



**HOSHIZAKI  
SELF-CONTAINED CUBER**

**MODEL IM-45L-1-25  
IM-45L-1**

**PARTS LIST  
(CHINA)**

K-1	APR. 2000	E-0	DEC. 2004
A-0	DEC. 2000	F-0	DEC. 2005
A-1	JAN. 2001	F-1	FEB. 2006
B-0	DEC. 2001	G-0	JAN. 2007
C-0	DEC. 2002	H-0	JAN. 2008
C-1	MAR. 2003		
C-2	JUL. 2003		
D-0	DEC. 2003		
D-1	NOV. 2004		

## MATERIAL ABBREVIATIONS

### ALUMINUM

AL = Aluminum

### COPPER

CU = Copper

### PLASTIC

ABS = Acrylonitrile -butadiene - styrene  
AC = Polyacetal  
EVA = Ethylene vinyl acetate  
PA = Polyamide = Nylon  
PC = Polycarbonate  
PE = Polyethylene  
PES = Polyester  
PETP = Polyethylene terephthalate = Tetlon  
PP = Polypropylene  
PS = Polystyrene  
PTFE = Polytetrafluoroethylene = Teflon  
PUR = Polyurethane  
PVC = Polyvinyl chloride

### RUBBER

VN = Vinyl Nitrile  
EPDM = EP rubber  
NBR = Nitrile butadiene rubber  
NR = Natural rubber  
NP = Neoprene  
SI.R = Silicone rubber  
SY.R = Synthetic rubber  
EPH = Epichlorohydrin

### STEEL

GS = Galvanized steel  
SS = Stainless steel  
PS = Plated steel  
PAS = Primed steel

### AUXILIARY CODE

K-0

Designates the year. "K" indicates the year 2000. Years progress or regress in alphabetical order. "J" is 1999, "L" is 2001, "M" is 2002, and so on. The letters "I" and "O" were skipped.  
Designates significant part changes within the same year. Base is 0 and this number advances for each change.

Example: P-1

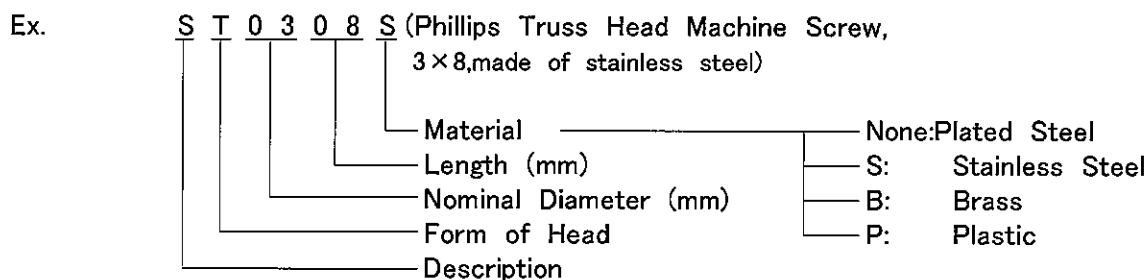
"P" indicates 2004.  
"1" indicates the first significant part change for 2004.

### MARKS LOCATED UNDER THE AUXILIARY CODE

- = Part deleted.  
x = Part deleted and replaced by "o" part.  
o = New part in place of "x" part.

## FASTENER ABBREVIATION LIST

ST	=	Phillips Truss Head Machine Screw
SP	=	Phillips Pan Head Machine Screw
SF	=	Phillips Flat Head Machine Screw
SS	=	Phillips Pan Head Machine Screw with Split Lock Washer
SW	=	Phillips Pan Head Machine Screw with Split Lock Washer and Flat Washer
T1	=	Phillips Truss Head Tapping Screw (Correspond to Type A)
T2	=	Phillips Truss Head Tapping Screw (Correspond to Type B)
T3	=	Phillips Truss Head Tapping Screw (Correspond to Type C)
FT	=	Phillips Truss Head Tapping Screw (Special)
BH	=	Hexagon Head Bolt
BC	=	Socket Head Cap Screw
BS	=	Hexagon Bolt with Split Washer
BW	=	Hexagon Bolt with Split Washer and Flat Washer
BF	=	Hexagon Flange Bolt
BR	=	Cross-Recessed Hexagon Head Bolt
BRW	=	Cross-Recessed Hexagon Head Bolt with Split Lock Washer and Flat Washer
WL	=	Split Lock Washer
WT	=	External Tooth Washer
WF	=	Flat Washer
WS	=	Spring Washer
NH	=	Hexagon Nut
NF	=	Hexagon Flange Nut
NC	=	Hexagon Cap Nut
NS	=	Square Nut
NW	=	Wing Nut



(Note)      Second character is numerical except the list.  
                  Ex: S1,S2,B3 etc.

And abbreviations and names are shown under the illustration.



**CHINA**

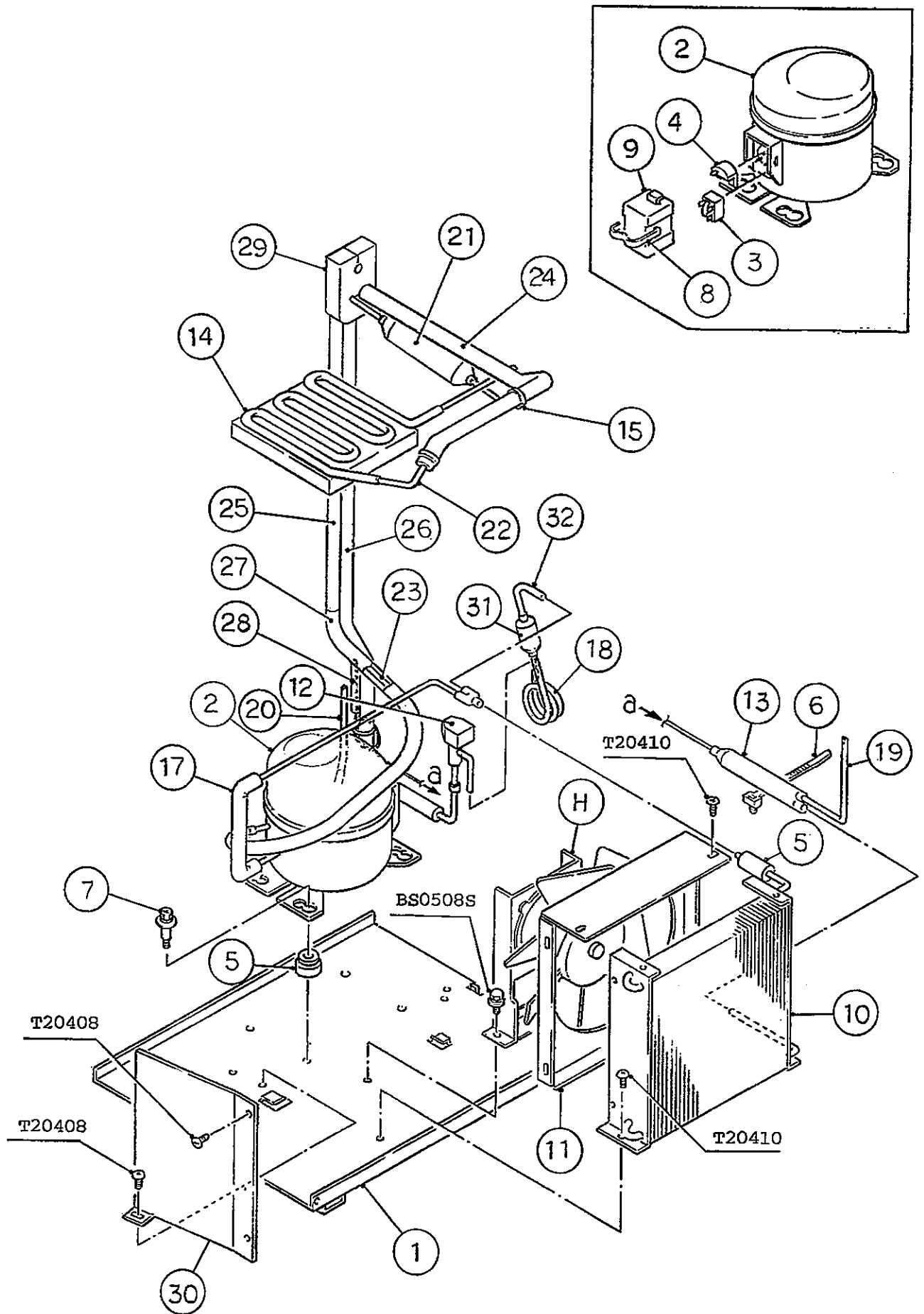
MODEL : <b>IM-45L-1-25</b>							
IM-45L-1				TITLE : <b>A. ICE CUBER ASSY</b>			
INDEX NO.	DESCRIPTION	MATERIAL OR MODEL NUMBER	PART NUMBER	REQ'D NUMBER			
				K-1 A-0	A-1,B-0 C-0,C-1 C-2,D-0 D-1	E-0	F-0,F-1 G-0,H-0
B	REFRIGERATION UNIT	-	-	1	1	1	1
C	ICE MAKING MECHANISM ASSY	-	-	1	1	1	1
D	CONTROL BOX ASSY	-	-	1	1	1	1
E	DOOR ASSY	-	3X3729A01	1	1	1	1
F	WATER CIRCUIT ASSY	-	3H9231A02	1	1	1	1
G	LABEL LOCATION	-	3X4194A01	1	1	—	
			3X4194A02			1	1
1	UNIT FRAME	-	-	1	1	1	1
2	TOP PANEL	S.S	3X3976G03	1	1	1	1
3	INSULATION - TOP PANEL	PE	2H0655-02	1	1	1	1
4	FRONT PANEL (UPPER)	S.S	3X3739G01	1	1	1	1
5	FRONT PANEL (LOWER)	S.S	2H4362-01	1	1	1	1
6	REAR PANEL	G.S	3H7553-03	1	1	1	1
7	LOUVER	ABS	101812-09	1	1	1	1
8	TAPE - BARRIER	w50 x L100	4X1442-02	1	1	1	1
9	FRONT FRAME	S.S, EEC-10	3H1678-08	1	1	1	1
10	INSULATION - FRONT FRAME	PE, 120	4H2317-05	1	1	1	1
11	PIPE COVER	G.S	3H0202-01	1	1	1	1
12	HINGE (RIGHT)	S.S	4H2583-01	1	1	1	1
13	HINGE (LEFT)	S.S	4H2584-01	1	1	1	1
14	HINGE SPACER (A)	S.S	4H0605-01	REQ'D	REQ'D	REQ'D	REQ'D
15	HINGE SPACER (B)	S.S	4H0605-02	REQ'D	REQ'D	REQ'D	REQ'D
16	DRAIN PAN	ABS	2H3147G01	1	1	1	1
17	DRAIN TUBE	SI	4H2585-01	1	1	1	1
18	DRAIN PIPE	ABS	4H1141-07	1	1	1	1
19	SLOPE	ABS	2H1349-01	1	1	1	1
20	COLLAR	S.S	4H0171-01	4	4	4	4
21	HOOK	S.S	404060-10	1	1	1	1
22	SPRING	ZINC-PLATED WIRE	416609-01	1	1	1	1
23	AIR FILTER	PP	332631G01	1	1	1	1
24	CLAMP	NSL-7	457064-01	1	1	1	1
25	POWER SUPPLY CORD	10A	4Y1082-01	1	1	1	1
26	TRANSFORMER	220V/100V	4R2819-01	1	1	1	1



IM-45L-1-25  
IM-45L-1

B. REFRIGERATION UNIT

(G-0) (H-0) and later  
(D-1) (E-0) (F-0) (F-1)  
(C-0) (C-1) (C-2) (D-0)  
(K-1) (A-0) (A-1) (B-0)



**CHINA**

MODEL : <b>IM-45L-1-25</b>							
IM-45L-1				TITLE : <b>B. REFRIGERATION UNIT</b>			
INDEX NO.	DESCRIPTION	MATERIAL OR MODEL NUMBER	PART NUMBER	REQ'D NUMBER			
				K-1 A-0	A-1,B-0 C-0,C-1 C-2,D-0 D-1	E-0	F-0,F-1 G-0,H-0
H	FAN MOTOR ASSY	(S-0897)	3H2757A03	1	1	1	1
1	BASE	G.S	3H3570G01	1	1	1	1
2	COMPRESSOR	PE80Y-5ZV	444736-01	1	1	1	1
3	STARTING RELAY	330N355D	436178-01	1	1	1	1
4	STARTING CAPACITOR	4TM283TFBYY-53	446791-04	1	1	1	1
5	RUBBER GROMMET	-	432252-01	4	4	4	4
6	TIE	-	436156-01	1	1	1	1
7	BOLT	M6	448834-01	4	4	4	4
8	COVER BAND	-	434798-01	1	1	1	1
9	COVER	-	434797-01	1	1	1	1
10	CONDENSER - AIR-COOLED	-	2H1066-01	1	1	1	1
11	SHROUD	G.S	3H4539-01	1	1	1	1
12	HOT GAS SOLENOID VALVE	AMS-24B10HD-1	418866-02	1	1	1	1
13	DRIER	KC-7861	444792-01	1	1	1	1
14	EVAPORATOR	-	3H1681G01	1	1	1	1
		-	3H5611G01	1	1	1	1
15	TIE	CV-100	7920-0002	REQ'D	REQ'D	REQ'D	REQ'D
16	JOINT - G	COPPER	4X1092-07	1	1	1	1
17	COPPER TUBE - HIGH SIDE	COPPER	3H3209G04	1	1	1	1
18	COPPER TUBE (A) - HOT GAS	COPPER	4X1292-01	1	1	1	1
19	PROCESS TUBE (A)	COPPER	4H4351-01	1	1	1	1
20	PROCESS TUBE (B)	COPPER	4H3594-01	1	1	1	1
21	HEAT EXCHANGER	-	2H0599G02	1	1	1	1
22	COPPER TUBE (B) - HOT GAS	(3H1217A04)	3H1930-01	1	1	1	1
23	COPPER TUBE - LOW SIDE	-	3H3210-01	1	1	1	1
24	INSULATION TUBE (A)	10 ID x 20 OD L=550	3H1217-05	1	1	1	1
25	INSULATION TUBE (D)	L=490	7762-1323	1	1	1	1
26	INSULATION TUBE (F)	L=905	7762-0717	1	1	1	1
27	INSULATION TUBE (G)	L=560	7762-0117	1	1	1	1
28	TUBE	EIT60 OAWG L=350	3H1217-23	1	1	1	1
29	INSULATION	-	4H4753-01	1	1	1	1
30	AIR GUIDE	G.S	3H5240-01	1	1	1	1

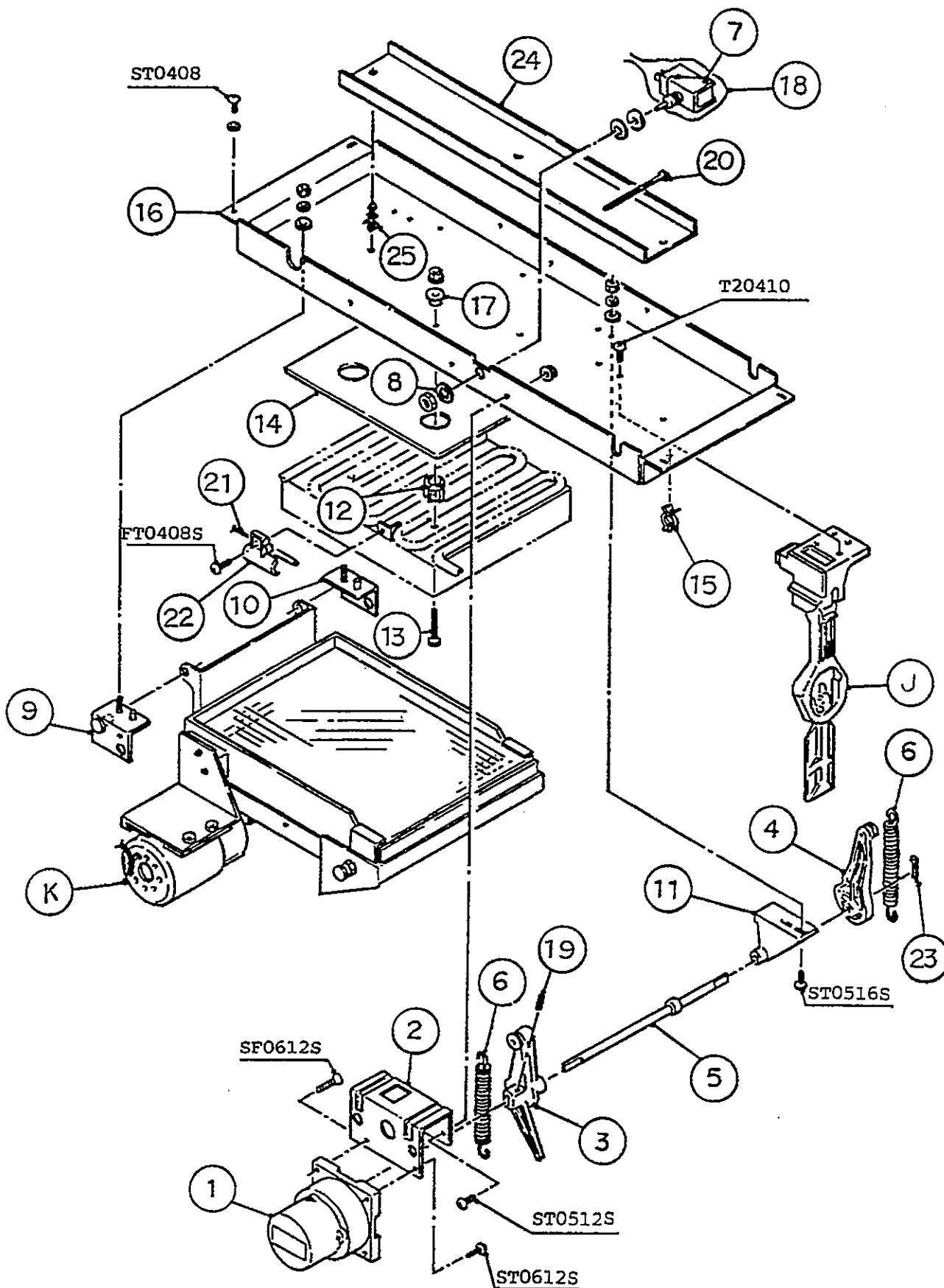




IM-45L-1-25  
IM-45L-1

C. ICE MAKING MECHANISM ASSY

(G-0) (H-0) and later  
(D-1) (E-0) (F-0) (F-1)  
(C-0) (C-1) (C-2) (D-0)  
(K-1) (A-0) (A-1) (B-0)



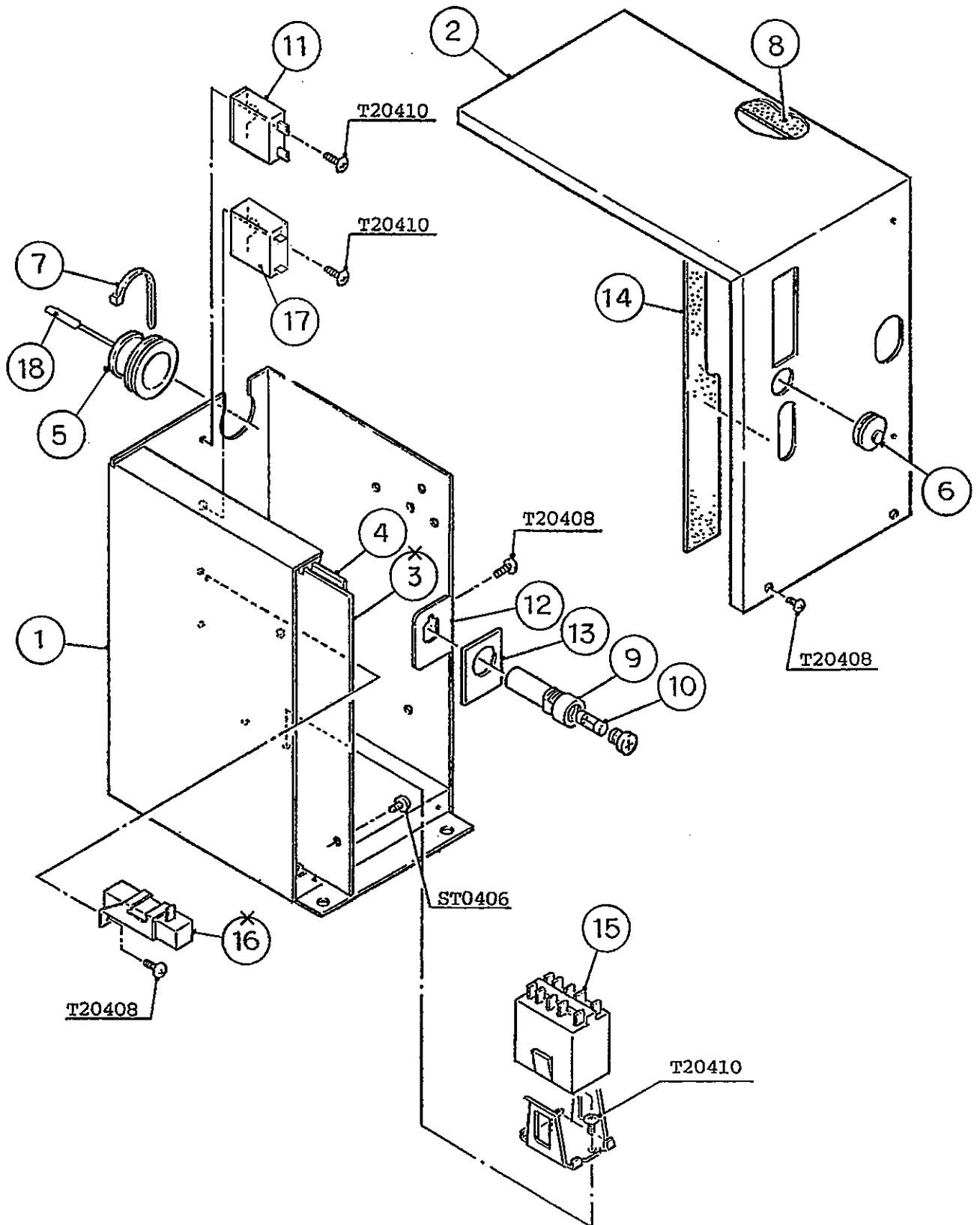
**CHINA**

MODEL : <b>IM-45L-1-25</b>							
IM-45L-1				TITLE : <b>C. ICE MAKING MECHANISM ASSY</b>			
INDEX NO.	DESCRIPTION	MATERIAL OR MODEL NUMBER	PART NUMBER	REQ'D NUMBER			
				K-1 A-0	A-1,B-0 C-0,C-1 C-2,D-0 D-1	E-0	F-0,F-1 G-0,H-0
J	BIN CONTROL SWITCH ASSY	(S-0942)	3H1537A04	1	1	1	1
K	WATER PAN ASSY	-	-	1	1	1	1
1	ACTUATOR MOTOR	TC0530	421132-01	1	—		
		SR65A41-11	434295-01		1	1	1
2	BRACKET - ACTUATOR MOTOR	G.S	3H1388-01	1	1	1	1
3	CAM (A)	AC	2H0659-01	1	1	1	1
4	CAM (B)	AC	3H1389-01	1	1	1	1
5	CAM SHAFT	S.S	4Y2369G01	1	1	1	1
6	SPRING	S.S	4H2640-01	2	2	2	2
7	TOGGLE SWITCH	VAT4-71	431977-01	1	1	1	1
8	WASHER - TOGGLE SWITCH	S.S	406196-01	1	1	1	1
9	HANGER BRACKET (FRONT) - WATER PAN	S.S	4H2591G01	1	1	1	1
10	HANGER BRACKET (REAR) - WATER PAN	S.S	4H2592G01	1	1	1	1
11	CAM SHAFT HOLDER	ABS	307256-02	1	1	1	1
12	SPACER	(45L-1-25)AC	4H1673G01	4	4	4	4
		(45L-1)	4H0471-01	4	4	4	4
13	SCREW - EVAPORATOR MOUNTING	S.S	4H2819-01	4	4	4	4
			4H2593-01	4	4	4	4
14	INSULATION - ICE MAKING MECHANISM BRACKET	(45L-1-25)PE	4H1467-01	1	1	1	1
		(45L-1)	4H1153-01	1	1	1	1
15	CLAMP	No. 2674	427902-02	1	1	1	1
16	BRACKET - ICE MAKING MECHANISM	(45L-1-25) PAINTED STEEL	3H1680-01	1	1	1	1
		(45L-1)	3H1405-01	1	1	1	1
17	WASHER	AC	4H0777-01	4	4	4	4
18	COVER - THERMISTOR	PE	408163-01	1	1	1	1
19	SPRING PIN	S.S, 3x22	712S-0322	1	1	1	1
20	TIE	CV-100	7920-0002	2	2	2	2
21	THERMISTOR-CUBE CONTROL	-	425373-03	1	1	1	—
		-	462976-02				1
22	HOLDER - THERMISTOR	PE	315479-01	1	1	1	1
23	SPLIT PIN	S.S, 2x12	711S-0212	1	1	1	1
24	GUIDE - CONNECTOR	G.S	4H5618-01	1	1	1	1
25	BOARD SUPPORT	KGLS-4S	414929-02	3	3	3	3

IM-45L-1-25  
IM-45L-1

D. CONTROL BOX ASSY

(G-0) (H-0) and later  
(D-1) (E-0) (F-0) (F-1)  
(C-0) (C-1) (C-2) (D-0)  
(K-1) (A-0) (A-1) (B-0)

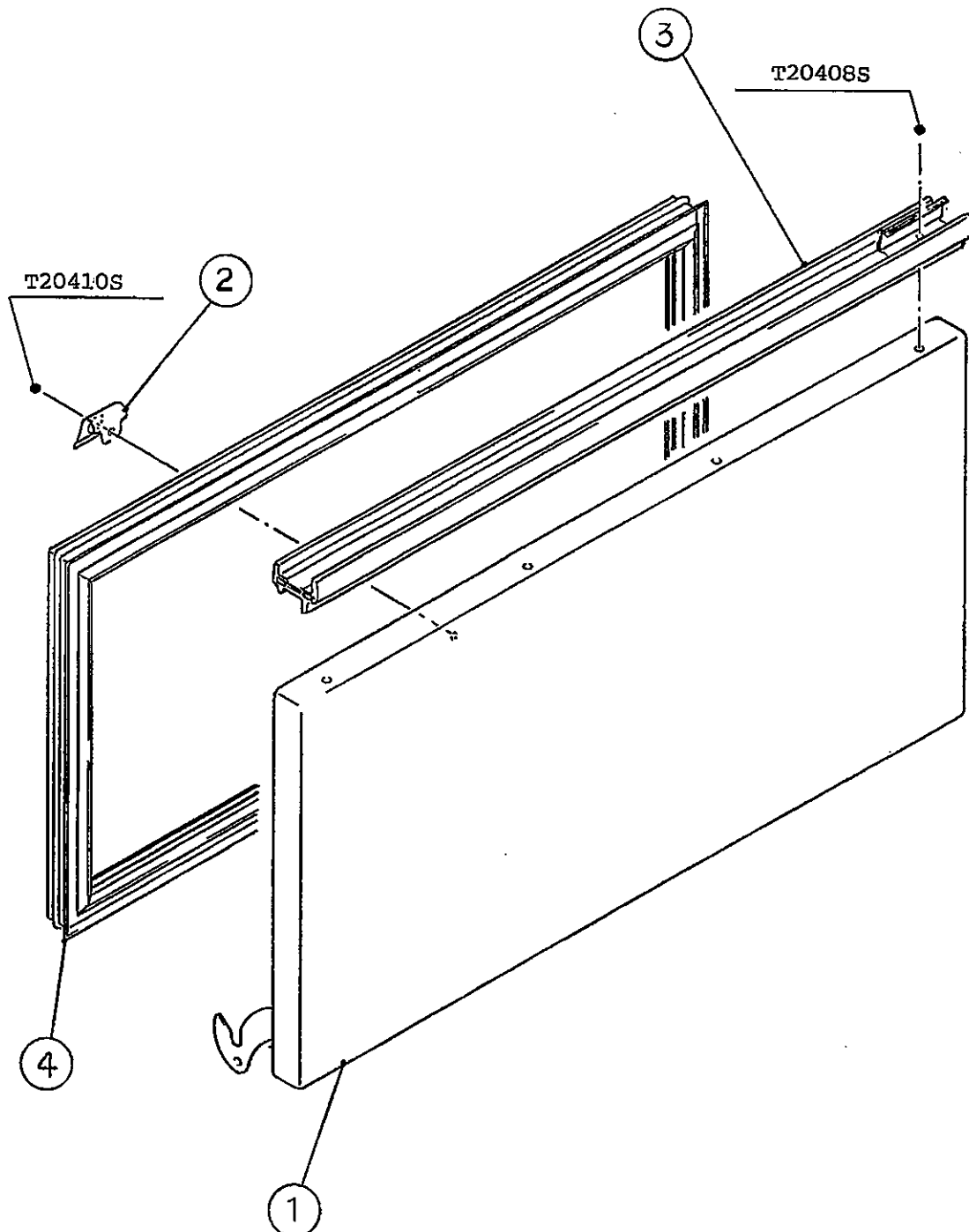




IM-45L-1-25  
IM-45L-1

E. DOOR ASSY

(G-0) (H-0) and later  
(D-1) (E-0) (F-0) (F-1)  
(C-0) (C-1) (C-2) (D-0)  
(K-1) (A-0) (A-1) (B-0)

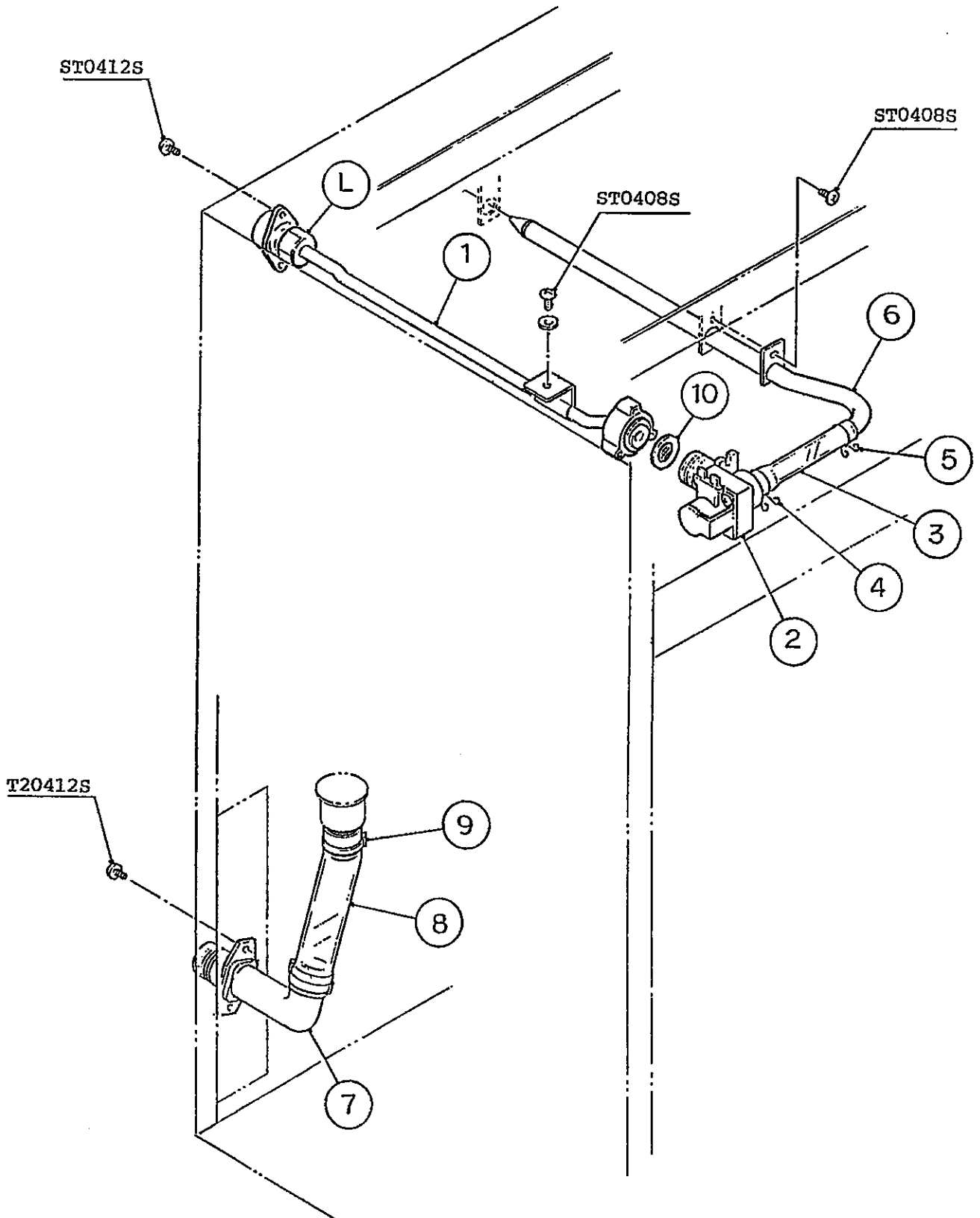




IM-45L-1-25  
IM-45L-1

F. WATER CIRCUIT ASSY

(G-0) (H-0) and later  
(D-1) (E-0) (F-0) (F-1)  
(C-0) (C-1) (C-2) (D-0)  
(K-1) (A-0) (A-1) (B-0)

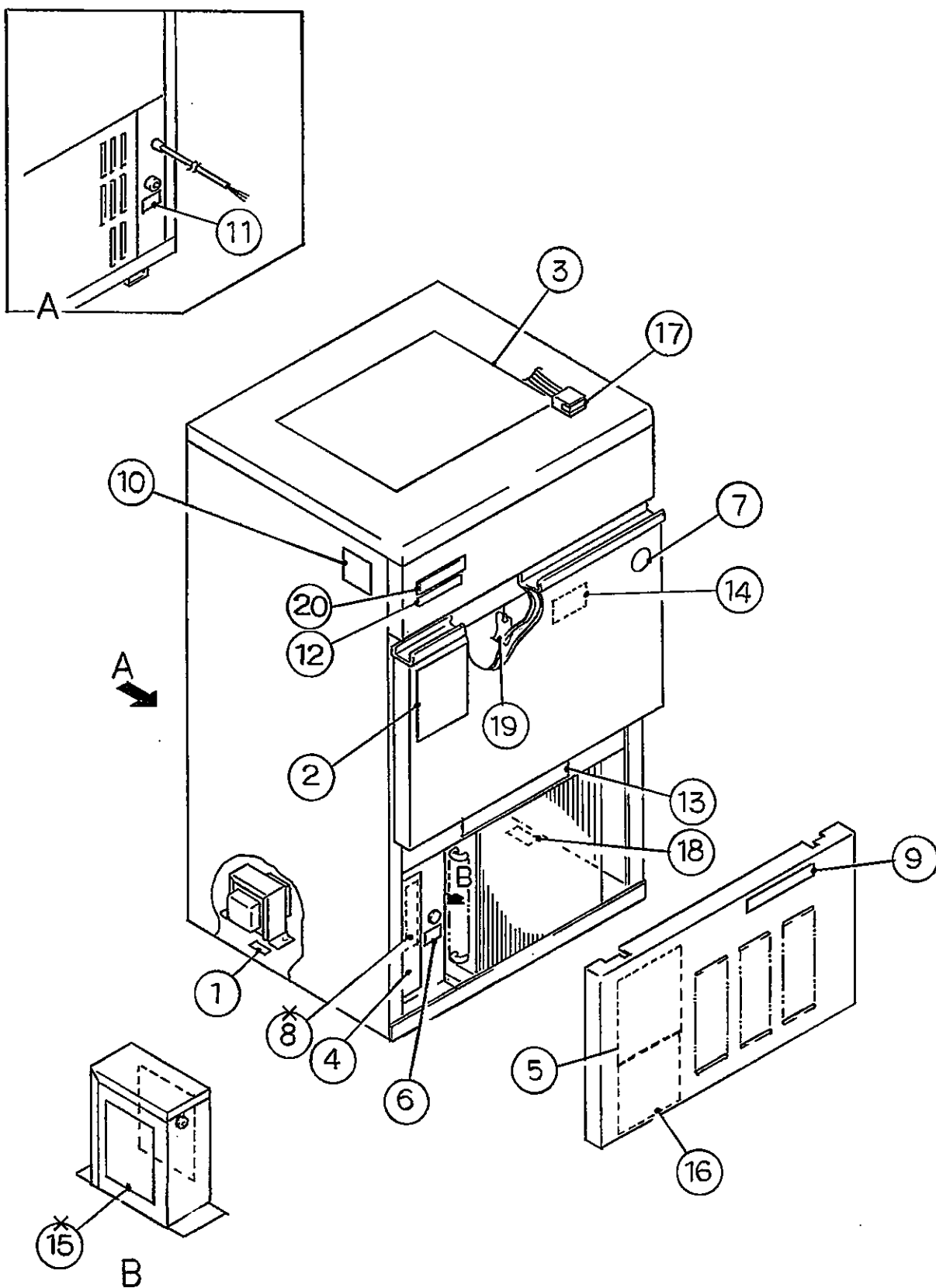






G. LABEL LOCATION

(G-0) (H-0) and later  
(D-1) (E-0) (F-0) (F-1)  
(C-0) (C-1) (C-2) (D-0)  
(K-1) (A-0) (A-1) (B-0)



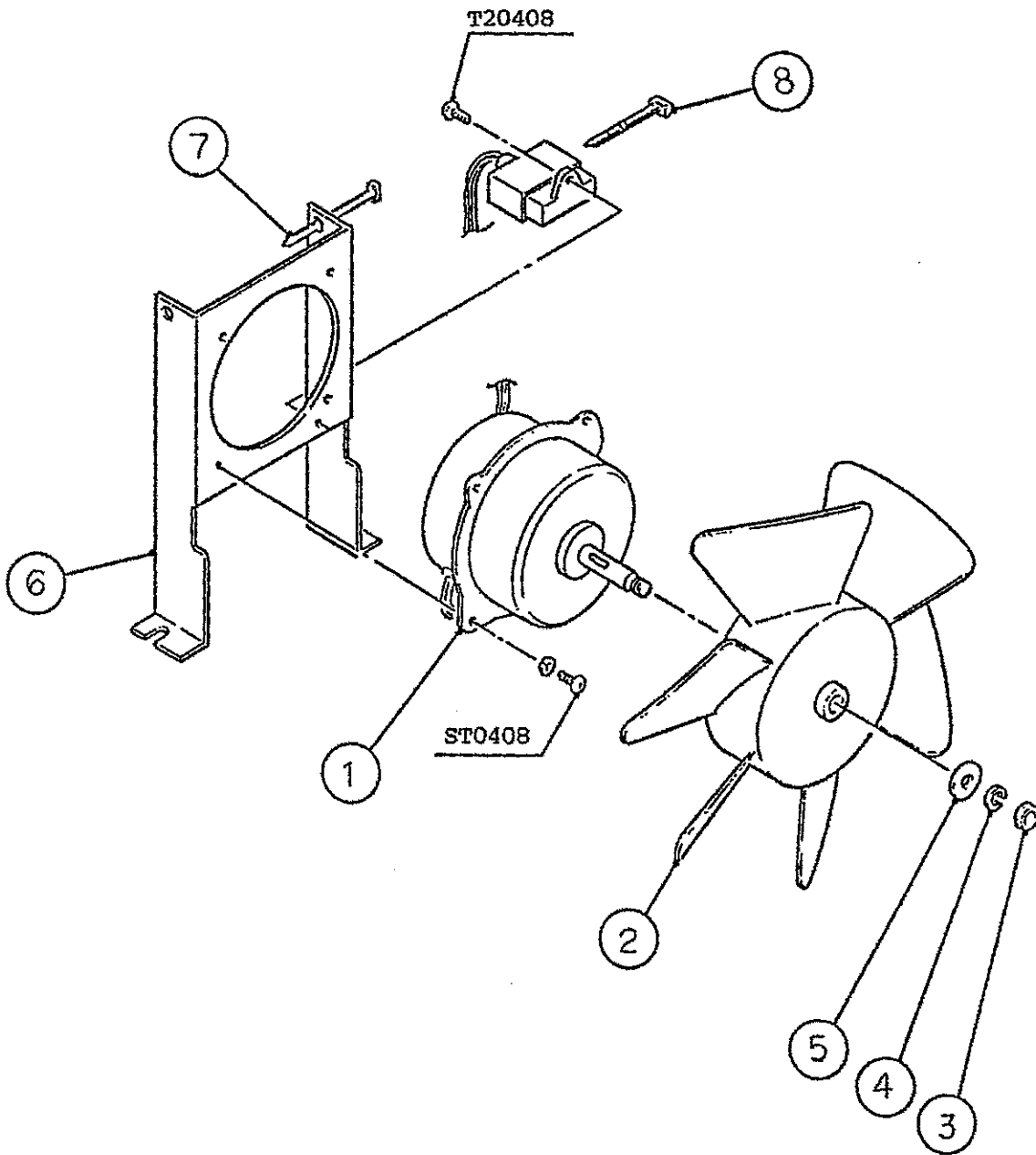
**CHINA**

MODEL : IM-45L-1-25 IM-45L-1								TITLE : G. LABEL LOCATION			
INDEX NO.	DESCRIPTION	MATERIAL OR MODEL NUMBER	PART NUMBER	REQ'D NUMBER							
				K-1 A-0	A-1,B-0 C-0,C-1 C-2,D-0 D-1	E-0	F-0,F-1 G-0,H-0				
1	LABEL - GROUND	PETP FILM	455371-01	1	1	1	1				
2	MAINTENANCE LABEL - EXTERIOR	PETP FILM	455362-01	1	1	1	1				
3	INSTRUCTION SHEET	PAPER	229461-01	1	1	1	1				
4	LABEL - CONTROL	PES FILM	455364-01	1	1	1	—				
			366920-01				1				
5	WIRING LABEL	PVC FILM	341967-01	1	1	—					
			365656-01			1	—				
			366962-01				1				
6	LABEL - FUSE	PETP FILM	455370-02	1	1	1	1				
7	LABEL - PENGUIN	PETP FILM	434432-01	1	1	1	1				
8	LABEL - VOLUME	PETP FILM	455360-01	1	1	1	×				
9	LABEL - AIR FILTER	PETP FILM	455367-01	1	1	1	1				
10	NAMEPLATE	PES FILM	N/A	1	1	1	1				
11	LABEL	PES FILM	455369-01	1	1	1	1				
12	MODEL NUMBER LABEL	-	4X8157-01	1	1	1	1				
13	INSTRUCTION LABEL	-	341943-01	1	1	1	1				
14	LABEL - BIN CONTROL	-	455365-01	1	1	1	1				
15	LABEL - CONTROLLER BOARD	-	455361-01	1	1	1	×				
16	MAINTENANCE LABEL - EXTERIOR	-	341942-01	1	1	1	1				
17	LABEL - PLUG	-	455368-01	1	1	1	1				
18	LABEL - R134a	-	444463-01	1	1	1	1				
19	TAG - CAUTION	PAPER	455385-01	1	1	1	1				
20	EMBLEM	-	456245-01	1	1	1	1				

IM-45L-1-25  
IM-45L-1

H. FAN MOTOR ASSY

(G-0) (H-0) and later  
(D-1) (E-0) (F-0) (F-1)  
(C-0) (C-1) (C-2) (D-0)  
(K-1) (A-0) (A-1) (B-0)

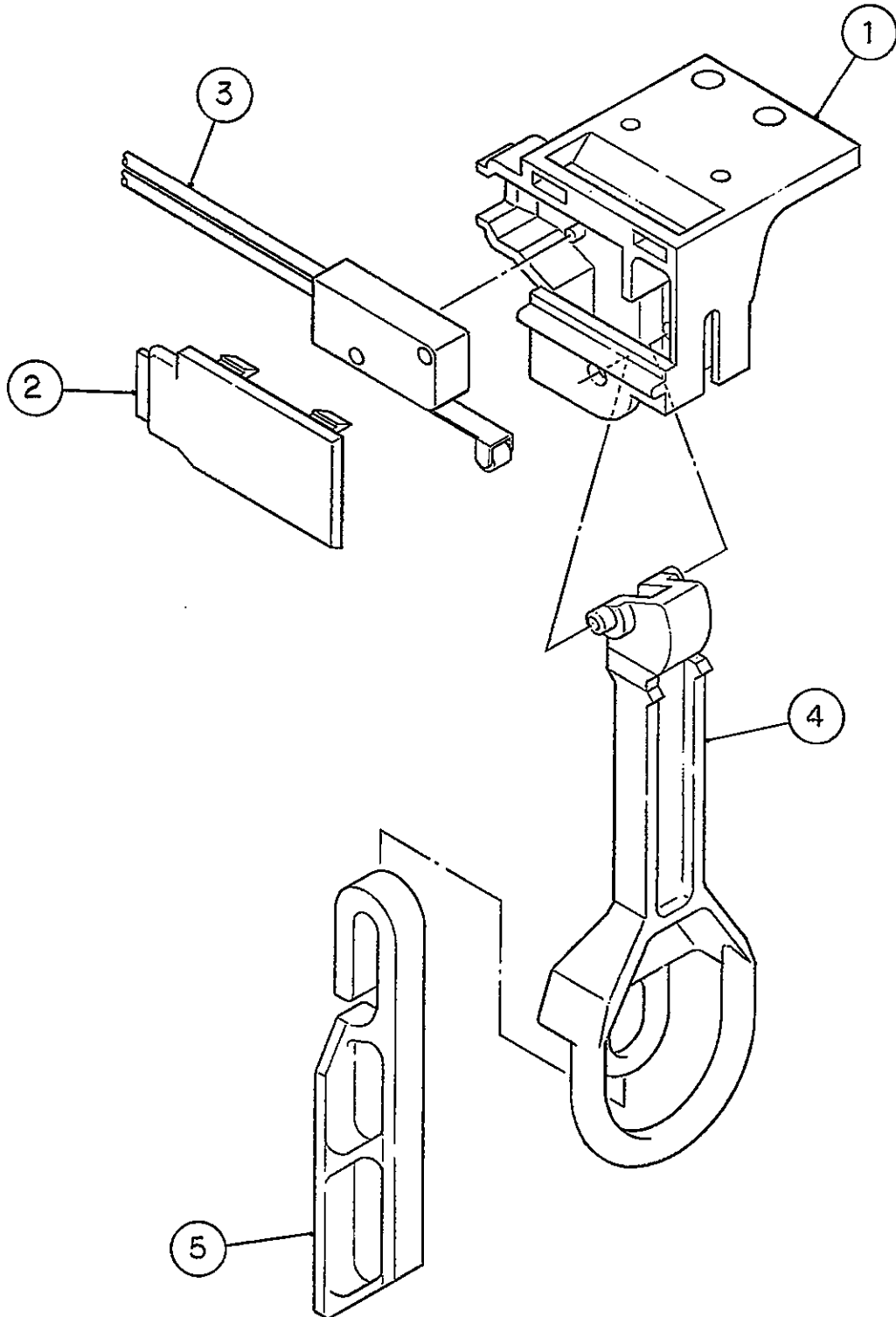




IM-45L-1-25  
IM-45L-1

J. BIN CONTROL SWITCH ASSY

(G-0) (H-0) and later  
(D-1) (E-0) (F-0) (F-1)  
(C-0) (C-1) (C-2) (D-0)  
(K-1) (A-0) (A-1) (B-0)

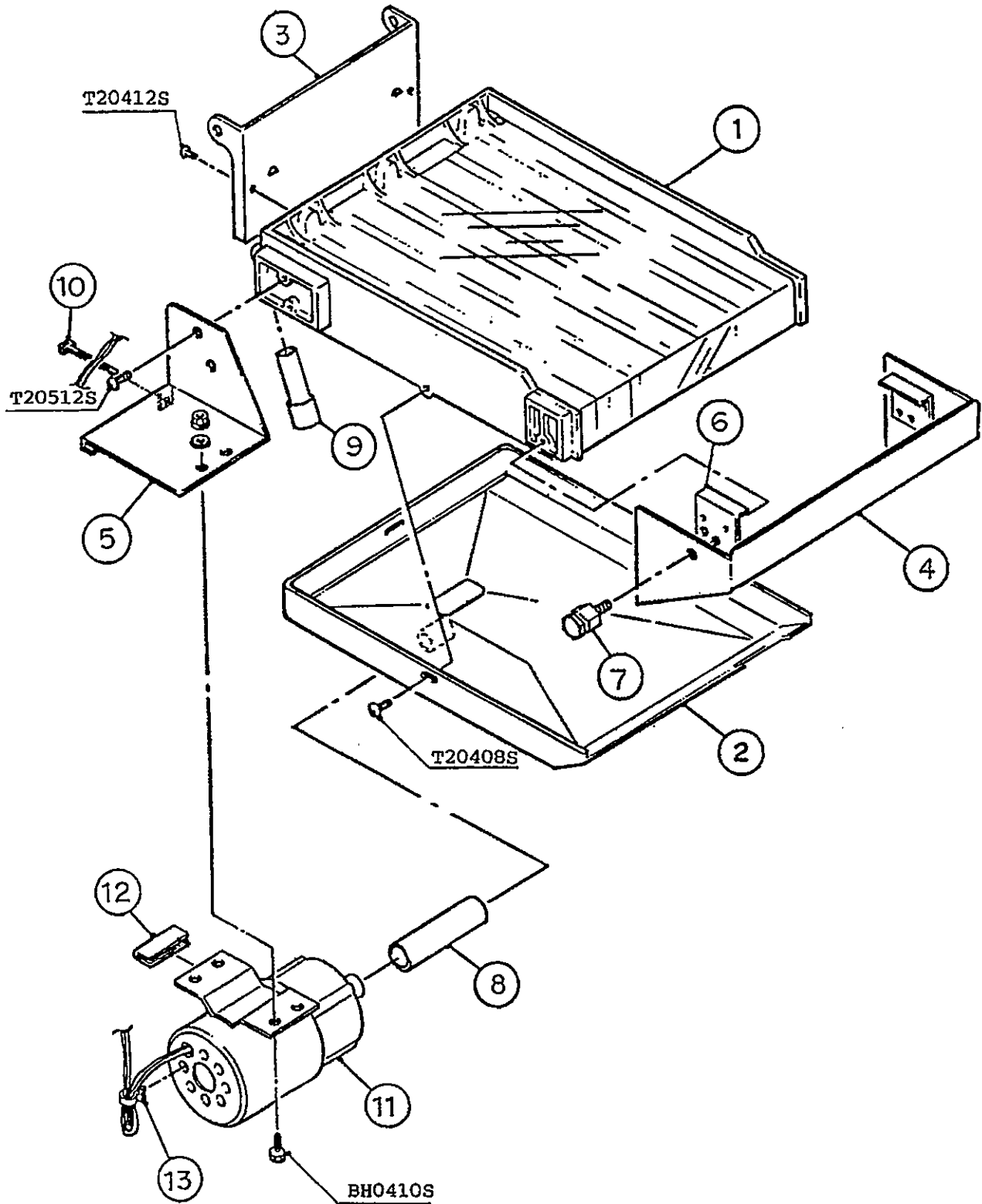




IM-45L-1-25  
IM-45L-1

K. WATER PAN ASSY

(G-0) (H-0) and later  
(D-1) (E-0) (F-0) (F-1)  
(C-0) (C-1) (C-2) (D-0)  
(K-1) (A-0) (A-1) (B-0)



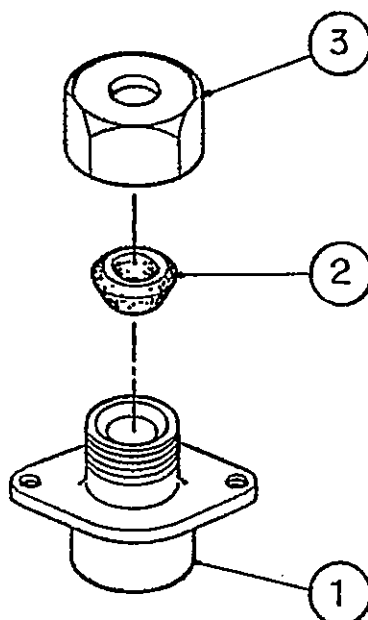




IM-45L-1-25  
IM-45L-1

L. FITTING (K) ASSY

(G-0) (H-0) and later  
(D-1) (E-0) (F-0) (F-1)  
(C-0) (C-1) (C-2) (D-0)  
(K-1) (A-0) (A-1) (B-0)





IM-45L-1-25  
IM-45L-1

M. ACCESSORIES

(G-0) (H-0) and later  
(D-1) (E-0) (F-0) (F-1)  
(C-0) (C-1) (C-2) (D-0)  
(K-1) (A-0) (A-1) (B-0)

