



HOSHIZAKI

Parts Manual

Modular Flaker

Models

F-2000MWH

F-2000MRH(3)(-C)

F-2000MLH



hoshizakiamerica.com

Number: 71339
Issued: 2-3-2012
Revised: 4-7-2016

CONTENTS

Auxiliary Codes.....	3
Note About Ordering Parts	5
A. Main Assembly & Refrigeration Circuit	6
B. Ice Making Unit.....	10
C. Water Circuit.....	12
D. Control Box Assembly.....	15
E. Accessories & Labels	17

Auxiliary Codes

F-2000MWH

L-0 July 2001
M-0 March 2002
M-1 August 2002
N-0 December 2002
P-0 December 2003
P-1 May 2004
Q-0 January 2005
R-0 December 2005
S-0 January 2007
T-0 February 2008
T-1 June 2008
U-0 January 2009
V-0 January 2010
V-1 June 2010
V-2 September 2010
A-0 January 2011
A-1 October 2011
B-0 January 2012
B-1 March 2012
C-0 February 2013
C-1 July 2013
C-2 November 2013
D-0 February 2014

F-2000MRH

L-0 May 2001
M-0 April 2002
N-0 January 2003
P-0 January 2004
P-1 August 2004
Q-0 March 2005
R-0 December 2005
S-0 January 2007
T-0 January 2008
T-1 June 2008
U-0 January 2009
V-0 January 2010
V-2 August 2010
V-3 November 2010
A-0 January 2011
A-1 November 2011
B-0 January 2012
B-1 March 2012
C-0 January 2013
C-1 July 2013
C-2 August 2013
D-0 January 2014

F-2000MRH3

L-0 April 2001
M-0 January 2002
N-0 December 2002
P-0 December 2003
P-1 August 2004
Q-0 May 2005
R-0 January 2006
S-0 January 2007
T-0 January 2008
T-1 June 2008
U-0 January 2009
V-0 January 2010
V-1 May 2010
V-2 August 2010
V-3 November 2010
A-0 January 2011
A-1 October 2011
B-0 January 2012
B-1 March 2012
C-1 July 2013
D-0 January 2014

F-2000MRH-C

T-0 April 2008
T-1 June 2008
U-0 January 2009
V-0 January 2010
V-1 June 2010
V-2 August 2010
V-3 October 2010
A-0 January 2011
A-1 October 2011
B-0 January 2012
B-1 March 2012
C-0 January 2013
C-1 June 2013
C-2 August 2013
D-0 January 2014

F-2000MLH

M-0	February 2002
M-1	June 2002
N-0	January 2003
P-0	December 2003
P-1	May 2004
Q-0	December 2004
R-0	December 2005
S-0	January 2007
T-0	January 2008
U-0	February 2009
V-0	February 2010
V-1	May 2010
V-2	August 2010
A-0	January 2011
A-1	November 2011
B-0	January 2012
B-1	March 2012
C-0	January 2013
C-1	July 2013
C-2	November 2013
D-0	January 2014

Auxiliary Code Breakdown

The auxiliary code is the first two characters in the serial number. The first character indicates the year. Years progress or regress in alphabetical order. The series runs from "A" through "V" and the letters "I" and "O" are skipped. The second character indicates significant part changes within a year. Base is "0" and this number advances for each change. In cases where there is a letter in parentheses, this designates the month. This is the last character in the serial number. The series runs from "(A)" through "(M)" and the letter "(I)" is skipped. This designation is only included when identifying a parts change within an auxiliary code.

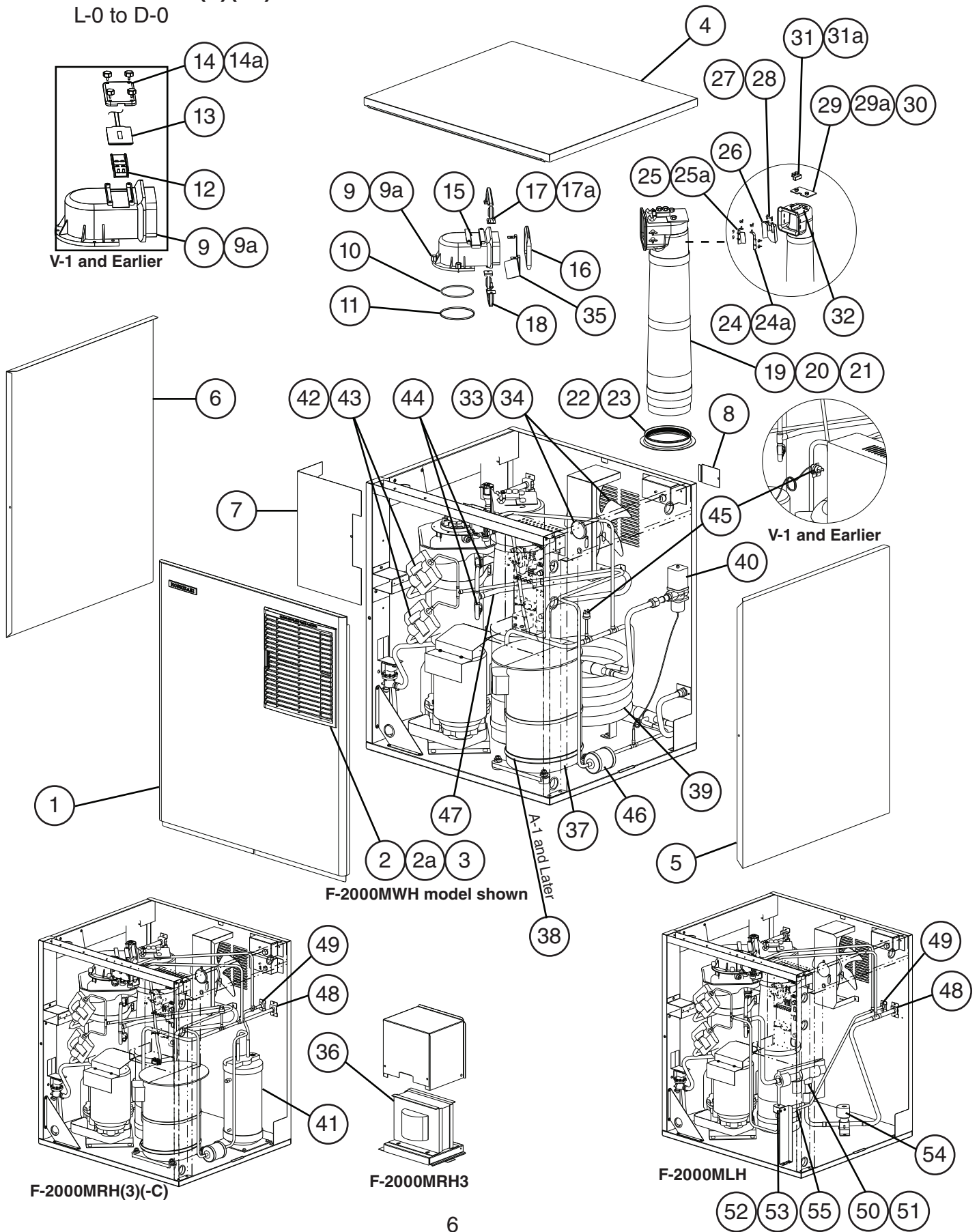
Note About Ordering Parts

Most assemblies cannot be ordered as complete units; parts in the assemblies generally must be ordered separately.

A. Main Assembly & Refrigeration Circuit

F-2000M_H(3)(-C)

L-0 to D-0

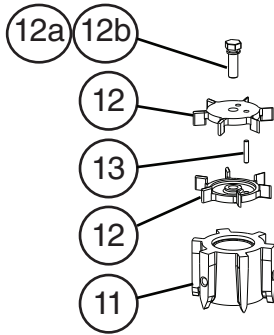


Title: A. Main Assembly & Refrigeration Circuit Model: F-2000M_H(3)(-C)												
Index No.	Description	Material or Model Number	Part Number	Required Number								
				L-0	M-0 to Q-0 (K)	Q-0 (L) to T-0	T-1 to U-0	V-0 V-1	V-2 to A-0	A-1 to B-0	B-1 to C-1	C-2 D-0
Main Assembly												
1	Front Panel		2A2075-01	1	1	1	1	1	1	1	1	1
2	Louver		1A0547-01	1	1	1	1	1	1	1	1	1
2a	Push Retainer		4A2414-01	3	3	3	3	3	3	3	3	3
3	Air Filter		2A2062G01	1	1	1	1	1	1	1	1	1
4	Top Panel		2A2074-01	1	1	1	1	1	1	1	1	1
5	Right Side Panel		2A2077G01	1	1	1	1	1	1	1	1	1
6	Left Side Panel		2A2076G01	1	1	1	1	1	1	1	1	1
7	Control Box Cover		340314-01	1	1	1	1	1	1	1	1	1
8	Junction Box Cover	F-2000MWH	433410-01	1	1	1	1	1	1	1	1	1
		F-2000MRH(3)(-C)		2	2	2	2	2	2	2	2	2
9	Spout		105378G01	1	1	1	1	1	1	1	1	1
9a	Thumbscrew		415949G11	3	3	3	3	3	3	3	3	3
10	O-Ring		7616-G095	1	1	1	1	-				
			4A4755-05					1	1	1	1	1
11	Nylon Ring		431736-01	1	1	1	1	1	1	1	1	1
12	Actuator		327038-01	1	1	1	1	1	-			
13	Belt Switch		440973-01	1	1	1	1	1	-			
14	Switch Cover		327037-01	1	1	1	1	1	-			
14a	Thumbscrew		415949G04	4	4	4	4	4	-			
15	Spout Cover		4A5174-01						1	1	1	1
16	Spout-to-Chute Packing		327040-01	1	1	1	1	1	1	1	1	1
17	Upper Spout Strap		327042-04	1	1	1	1	1	1	-		
			3A6912-02							1	1	1
17a	Wing Nut	M6, SS	7E12-0600	2	2	2	2	2	2	2	2	2
18	Lower Spout Strap		327041G02	1	1	1	1	1	1	-		
			3A6913G01							1	1	1
19	Chute		216219-01	1	1	1	1	1	1	1	1	1
20	Chute Insulation		216220-01	1	1	1	1	1	1	1	1	1
21	Chute Tie		436531G02	3	3	3	3	3	3	3	3	3
22	Chute Packing		432877-02	1	1	1	1	1	1	1	1	1
23	Nylon Ring		327427-01	1	1	1	1	1	1	1	1	1
24	Chute Baffle A		341012G01	1	1	1	1	1	1	1	1	1
24a	Wing Nut		7E12-0400	3	3	3	3	3	3	3	3	3
25	Chute Baffle B		341013G01	1	1	1	1	1	1	1	1	1
25a	Wing Nut		7E12-0400	3	3	3	3	3	3	3	3	3
26	Actuator		436848G02	1	1	1	1	1	1	1	1	1
27	Shaft		436851-01	1	1	1	1	1	1	1	1	1
28	Snap Pin		715S-0005	2	2	1	2	2	2	2	2	2
29	Plate		4A2039-01	1	1	1	1	1	1	1	1	1
29a	Thumbscrew		415949G10	2	2	2	2	2	2	2	2	2

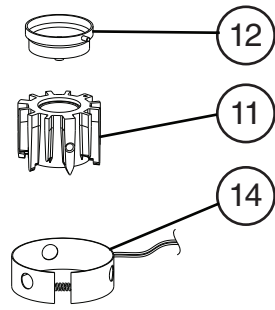
Title: A. Main Assembly & Refrigeration Circuit Model: F-2000M_H(3)(-C)												
Index No.	Description	Material or Model Number	Part Number	Required Number								
				L-0	M-0 to Q-0 (K)	Q-0 (L) to T-0	T-1 to U-0	V-0 V-1	V-2 to A-0	A-1 to B-0	B-1 to C-1	C-2 D-0
30	Packing		441217-01	1	1	1	-					
31	Bin Control (proximity switch)		4A2033-01	1	1	1	1	1	1	1	1	1
31a	Thumbscrew		415949G08	2	2	2	2	2	2	2	2	2
32	Bin Control Bracket (proximity switch)		3A1744G01	1	1	1	1	1	1	1	1	1
33	Fan Motor		440917-01	1	1	1	1	1	1	1	1	1
34	Fan Blade		434959-01	1	1	1	1	1	1	1	1	1
35	Drip Guide		3A1628-01	1	1	1	1	1	1	1	1	1
36	Main Transformer	F-2000MRH3(-C)	2U0128-01	1	1	1	1	1	1	1	1	1
Refrigeration Circuit												
37	Compressor (A-1 and later utilize external crankcase heater - item 38)	F-2000MWH F-2000MRH(-C)	4A1420-02	1	1	1	1	1	1	-		
			4A4890-01							1	1	1
		F-2000MRH3	4A1419-02	1	1	1	1	1	1	-		
			4A4891-01							1	1	1
38	Crankcase Heater		434186-01							1	1	-
			4A5397-02									1
39	Condenser	F-2000MWH HS-0164	2A0931-02	1	-							
			2A2359G05		1	1	1	1	1	1	1	-
			3A7324-01									1
40	Water Regulating Valve	F-2000MWH	4A1417-01	1	1	1	1	1	1	1	1	1
41	Receiver	F-2000MRH(3)(-C)	438209-01	1	1	1	1	1	1	1	1	1
42	Thermostatic Expansion Valve		4A1117-01	2	2	2	2	2	2	2	2	2
43	Thermostatic Expansion Valve Cover		4A1168-01	2	2	2	2	2	2	2	2	2
44	Thermostatic Expansion Valve Bulb Holder		3A0112-01	2	2	2	2	2	2	2	2	2
45	High-Pressure Switch	F-2000MWH F-2000MRH F-2000MRH-C F-2000MRH3	433441-05	1	1	1	1	1	-			
			463180-05						1	1	1	1
46	Drier	F-2000MWH F-2000MRH F-2000MRH-C F-2000MRH3	4A1338-01	1	1	1	1	1	1	1	1	1
47	Heat Exchanger	F-2000MWH F-2000MRH F-2000MRH-C F-2000MRH3	1A1544G01	1	1	1	1	1	1	1	1	1
48	Discharge Line Coupling	F-2000MRH F-2000MRH-C F-2000MRH3	434072-01	1	1	1	1	1	1	1	1	1
	Suction Line Coupling	F-2000MLH	448569-01	1	1	1	1	1	1	1	1	1
49	Liquid Line Coupling	F-2000MRH F-2000MRH-C F-2000MRH3 F-2000MLH	426554-01	1	1	1	1	1	1	1	1	1
50	EPR (Evaporator Pressure Regulator) Valve	F-2000MLH	446872-02		1	1	1	1	1	1	1	1

Title: A. Main Assembly & Refrigeration Circuit Model: F-2000M_H(3)(-C)												
Index No.	Description	Material or Model Number	Part Number	Required Number								
				L-0	M-0 to Q-0 (K)	Q-0 (L) to T-0	T-1 to U-0	V-0 V-1	V-2 to A-0	A-1 to B-0	B-1 to C-1	C-2 D-0
51	EPR (Evaporator Pressure Regulator) Valve Cover	F-2000MLH	340434-01		1	1	1	1	1	1	1	1
52	Liquid Line Valve Body	F-2000MLH	440352-01		1	-						
			4A3276-01			1	1	1	1	1	1	1
53	Valve Coil	F-2000MLH	440353-01		1	-						
			4A3277-01			1	1	1	1	1	1	1
54	Suction Line Valve	F-2000MLH	446873-01		1	1	1	1	1	1	1	1
55	Strainer	F-2000MLH	4A1385-01		1	1	1	1	1	1	1	1

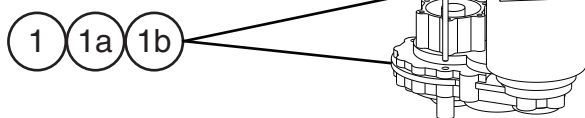
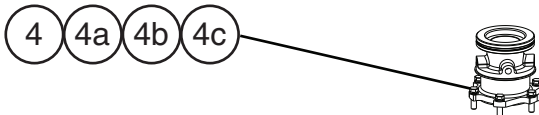
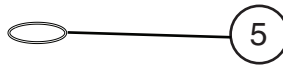
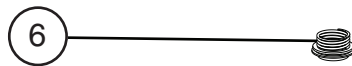
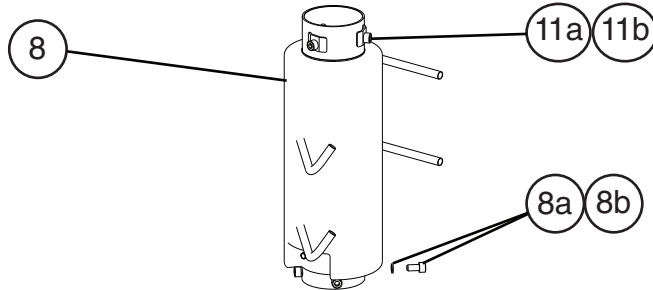
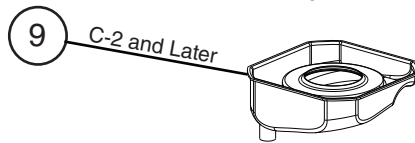
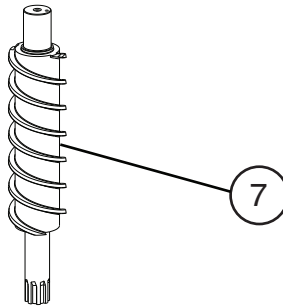
B. Ice Making Unit
F-2000M_H(3)(-C)
 L-0 to D-0



F-2000MWH
 F-2000MRH
 F-2000MRH3
 F-2000MLH

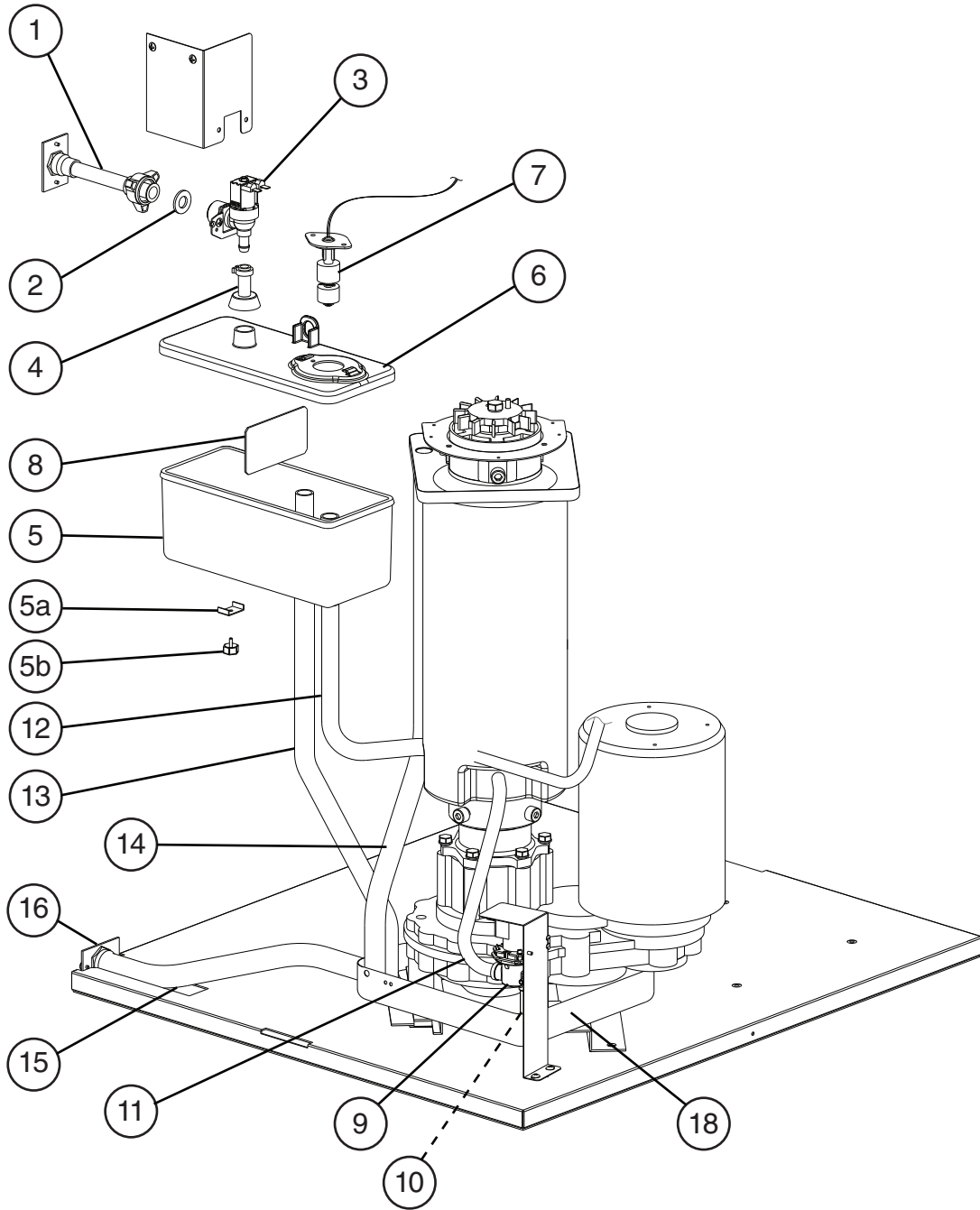


F-2000MRH-C

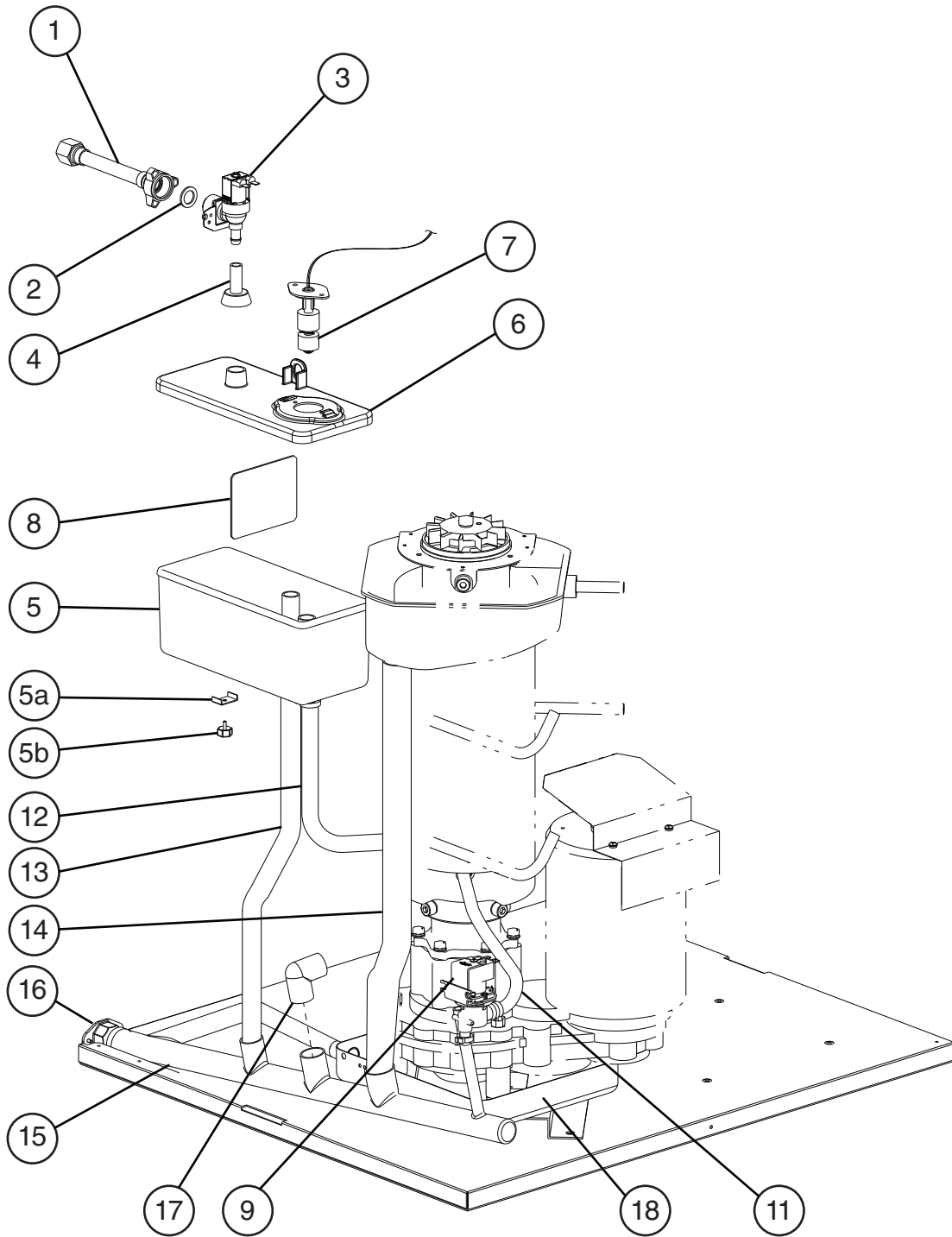


Title: B. Ice Making Unit Model: F-2000M_H(3)(-C)											
Index No.	Description	Material or Model Number	Part Number	Required Number							
				L-0 to U-1	V-0 to C-1	C-2 to D-0					
1	Gear Motor		2U0129-01	1	1	1					
1a	Socket Head Cap Screw	10x1.5, SS	420600-02	3	3	3					
1b	Spring Washer	M10, SS	7L22-1000	3	3	3					
2	Gear Motor Barrier		3A1639-01	1	1	1					
2a	Truss Head Screw	4x8, SS	7C32-0408	2	2	2					
2b	Rubber Seal Washer	M4	4A5268-01	2	2	2					
3	Coupling		420372-01	1	1	1					
4	Housing		206509G02	1	1	1					
4a	Hex Head Bolt	8x25, SS	7B02-0825	6	6	6					
4b	Washer	M8, SS	7W22-0800	6	6	6					
4c	Split Lock Washer	M8, SS	7L22-0800	6	6	6					
5	O-Ring		7616-G090	1	-						
			4A4755-04		1	1					
6	Mechanical Seal		432493-01	1	1	1					
7	Auger		120864G02	1	1	1					
8	Evaporator		228196G01	1	-						
			228196G06		1	-					
			2A7028G01			1					
8a	Socket Head Cap Screw	10x20, SS	7S12-1020	4	4	4					
8b	Split Lock Washer	M10, SS	7L22-1000	4	4	4					
9	Upper Drain Pan		2A6885-01			1					
10	Flange		352714-01		1	1					
11	Extruding Head	F-2000MWH F-2000MRH F-2000MRH3 F-2000MLH F-2000MRH-C	216407G01	1	1	1					
			2A1594G01	1	1	1					
11a	Seal Bolt	M10, SS	474757G01	3	3	3					
11b	Washer		425277-01	3	-						
12	Cutter	F-2000MWH F-2000MRH F-2000MRH3 F-2000MLH F-2000MRH-C	327026-01	2	2	2					
			315736G01	1	1	1					
12a	Hex Head Bolt	F-2000MWH F-2000MRH F-2000MRH3 F-2000MLH 10x35, SS	7B02-1035	1	1	1					
12b	Split Lock Washer	F-2000MWH F-2000MRH F-2000MRH3 F-2000MLH M10, SS	7L22-1000	1	1	1					
13	Dowel Pin	F-2000MWH F-2000MRH F-2000MRH3 F-2000MLH	713S-0526	1	1	1					
14	Heater	F-2000MRH-C	4A4335-01	1	1	1					

C. Water Circuit
F-2000M_H(3)(-C)
1/2
L-0 to C-1



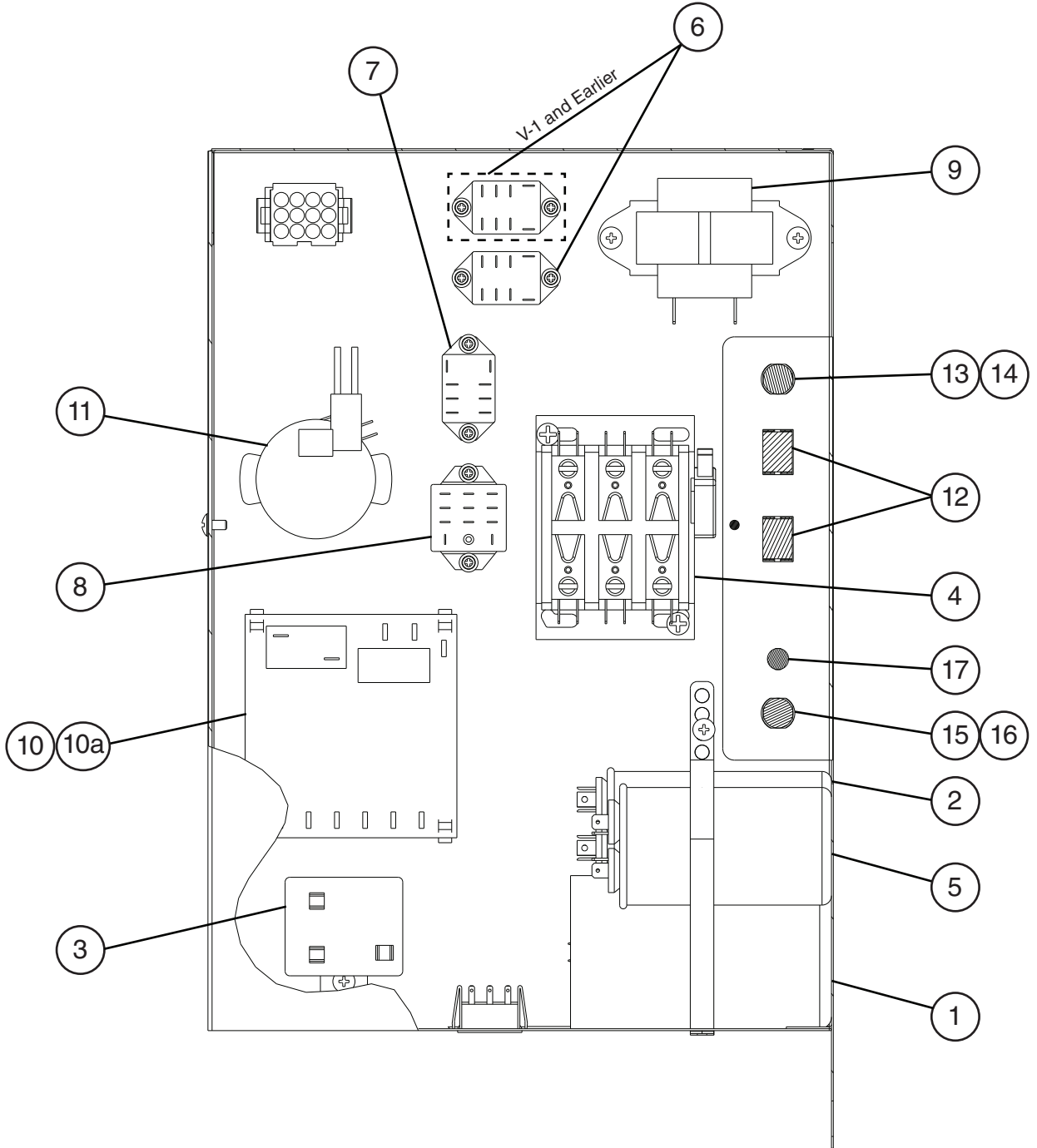
C. Water Circuit
F-2000M_H(3)(-C)
2/2
C-2, D-0



Title: C. Water Circuit Model: F-2000M_H(3)(-C)

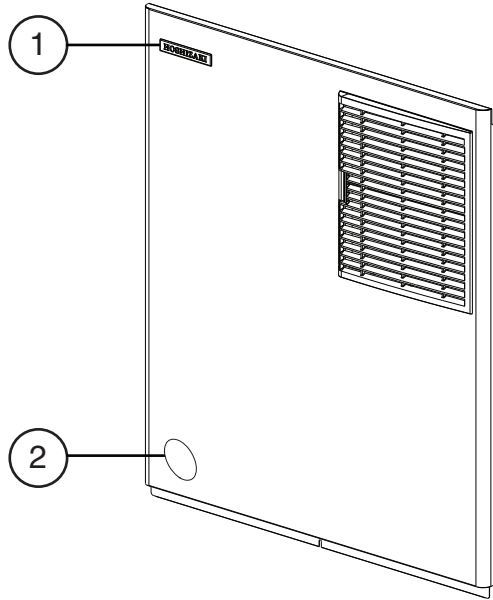
Index No.	Description	Material or Model Number	Part Number	Required Number									
				L-0	M-0 to P-0	P-1 to B-0	B-1 to C-1	C-2 to D-0					
1	Water Supply Pipe		4A0891G01	1	1	1	-						
			4A0891G02				1	1					
2	Washer		4A0867-01	1	1	1	1	-					
	Rubber Gasket		413854-03					1					
3	Inlet Water Valve		4A0865-01	1	1	1	-						
			4A5309-01				1	1					
4	Reservoir Inlet		4A0869-01	1	1	1	1	1					
5	Reservoir		208125-01	1	1	1	1	1					
5a	Collar		423416-03	1	1	1	1	1					
5b	Thumbscrew		415949G08	1	1	1	1	1					
6	Reservoir Cover		208126-01	1	1	1	1	1					
7	Float Switch		435490-01	1	1	1	1	1					
8	Reservoir Separator		423538-02	1	1	1	1	1					
9	Drain Valve		4A2077-01	1	-								
			4A2772-01		1	1	1	1					
10	Hose	L=45 mm	7716-0913	1	1	1	1	-					
11	Vinyl Hose	L=370 mm	7725-0912	1	-								
	Silicone Hose	L=225 mm	7730I3896		1	1	1	-					
12	Silicone Hose	L=260 mm	7730-1519	1	1	1	1	1					
13	Silicone Hose	L=520 mm	7730-1721	1	1	-							
			7730-1822			1	-						
			7725-1923				1	-					
		L=480 mm						1					
14	Vinyl Hose	L=650 mm	7725-1923	1	1	1	1	-					
		L=525 mm	4A0658L01						1				
15	Vinyl Hose	L=320 mm	7716-2025	1	1	1	1	-					
	Drain Hose		3A7490-01						1				
16	Drain Fitting		4A0776G01	1	1	1	1	-					
			4A5528-01						1				
17	Elbow		4A5624-01						1				
18	Lower Drain Pan		219358G01	1	1	1	1	1					
Hose Clamps													
	Hose Clamp	14-15 mm	4A2017-08	4	4	4	4	4					
	Hose Clamp	17-21 mm	4A2017-05	2	2	2	2	2					
	Hose Clamp	21-26 mm	4A2017-01	2	2	2	-						
	Hose Clamp	26-30 mm	4A2017-02	1	1	1	1	1					

D. Control Box Assembly
F-2000M_H(3)(-C)
 L-0 to D-0



Title: D. Control Box Assembly Model: F-2000M_H(3)(-C)												
Index No.	Description	Material or Model Number	Part Number	Required Number								
				L-0	M-0 to Q-0 (E)	Q-0 (F) to T-0	T-1 to V-1	V-2 V-3	A-0 to A-0 (H)	A-0 (J) to C-0	C-1 to D-0	
1	Start Capacitor	F-2000MWH F-2000MRH F-2000MRH-C 189-227MFD, 330VAC	3A0076-12	1	1	1	1	1	1	1	1	
2	Run Capacitor	F-2000MWH F-2000MRH F-2000MRH-C 40MFD, 370VAC	439943-09	1	-							
			3A2005-13		1	1	1	1	1	1	1	1
3	Start Relay	F-2000MWH F-2000MRH F-2000MRH-C	4A1107-09	1	1	1	1	1	1	1	1	
4	Magnetic Contactor	F-2000MWH F-2000MRH F-2000MRH3 F-2000MRH-C	4A0794-01	1	1	1	1	1	1	1	1	
5	Gear Motor Capacitor	65MFD, 250VAC	441021-01	1	1	1	1	1	1	-		
		65MFD, 370VAC	4A5450-01							1	1	
6	Water Control Relay	24VAC	406132-06	1	1	1	1	1	1	1	1	
	Spout Control Relay (V-1 and Earlier)			1	1	1	1	-				
7	Circuit Protect Relay	F-2000MWH F-2000MRH F-2000MRH-C F-2000MLH 220/240VAC	418271-05	1	1	1	1	1	1	1	1	
8	Compressor Delay Relay (gear motor protect relay)	120VAC	418179-03	1	1	1	1	1	1	1	1	
9	Control Transformer		4A0557-01	1	1	1	1	1	1	1	1	
10	Control Board		437305-01	1	1	1	1	1	1	1	-	
	"L-A" Control Board		4A5591-01								1	
10a	Control Board Support		4A0336-03	4	4	4	4	4	4	4	4	
11	Drain (flush) Timer		4A0889-01	1	1	1	1	1	1	1	-	
			4A2157-01								1	
12	Drain (flush) Switch and Power Switch	F-2000MLH	4A0558-01	2	2	2	2	2	2	2	2	
13	Fuse Holder		4A5443-01	1	1	1	1	1	1	1	1	
14	Fuse	AGC-1A, 250VAC	4A0893-01	1	1	1	1	1	1	1	1	
15	Protector		440972-01	1	1	-						
	Fuse Holder		4A0892-02			1	1	1	-			
			4A3449-02							1	1	1
16	Fuse	GMD-7A, 125VAC slow-blow	4A3804-01			1	1	1	1	1	1	
17	Lamp		4A1821-01	1	-							
			4A2672-01		1	1	1	-				

E. Accessories & Labels
F-2000M_H(3)(-C), F-2000MLH
 L-0 to D-0



Title: E. Accessories & Labels Model: F-2000M_H(3)(-C)					Required Number								
Index No.	Description	Material or Model Number	Part Number	L-0 to D-0									
1	Hoshizaki Emblem Label		4A0560-01	1									
2	Penguin Label		4A0526-01	1									
3	Universal Brace		4A0363-01	2									
3a	Hex Head Bolt	5x12, SS	7B02-0512	2									