



**SERVICE PARTS MANUAL
CIM SERIES**

**CIM0330, CIM0430, CIM0436, CIM0530 and CIM0636
CIM0335, CIM0435, CIM0535 and CIM0635**



This parts list contains the service parts available for the following CIM Series.

| | | | |
|----------------|---------------------|----------------|---------------------|
| CIM0330 | 115/60/1 | CIM0335 | 220-240/50/1 |
| CIM0430 | 115/60/1 | | |
| CIM0436 | 208-230/60/1 | CIM0435 | 220-240/50/1 |
| CIM0530 | 115/60/1 | CIM0535 | 220-240/50/1 |
| CIM0636 | 208-230/60/1 | CIM0635 | 220-240/50/1 |

Model Number Example

CIM0330HA

CIM = **C**uber **I**ce **M**achine

03 = 300 lb, in 24 hours capacity

3 = 30 inch wide cabinet

0 = 115 Volt, **5** = 220-240/50/1 **6** = 208-230/60/1 Volt

H = Half Cube Size, **F** = Full Cube Size

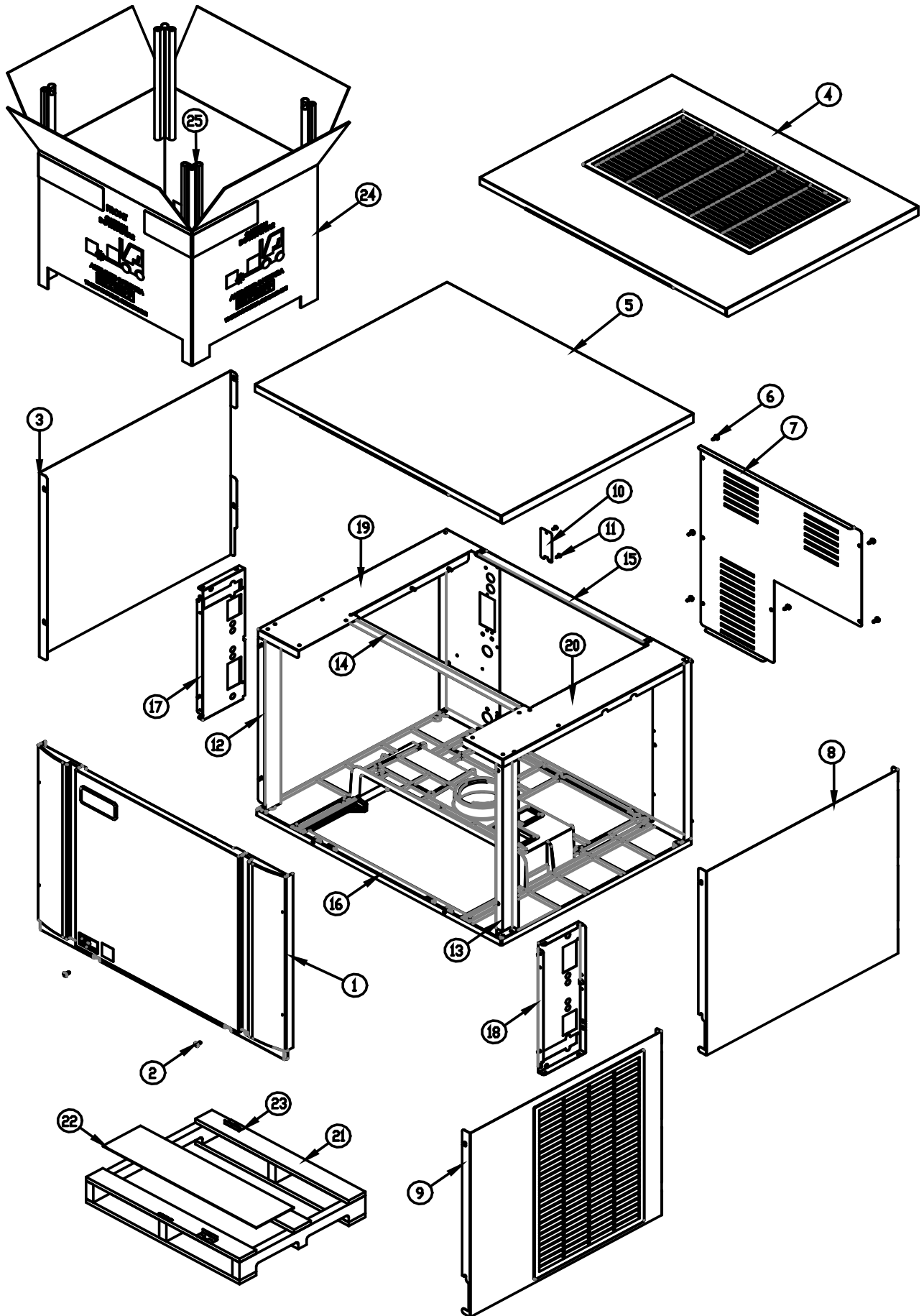
A = Air Cooled Condenser, **W** = Water Cooled Condenser **R**=Remote Condenser

Check the model number on the data plate and refer to the correct listing for the specific component.

Check carefully that the correct part is identified and ordered.

| | |
|-------------------------------|-------------------|
| Table of Contents | Page 1 |
| Cabinet | Page 2-3 |
| Water System | Page 4-5 |
| Air Cooled Condenser | Page 6-7 |
| Water Cooled Condenser | Page 8-9 |
| Remote Condenser | Page 10-11 |
| Electrical | Page 12-14 |
| KCUBEDISP | Page 15 |

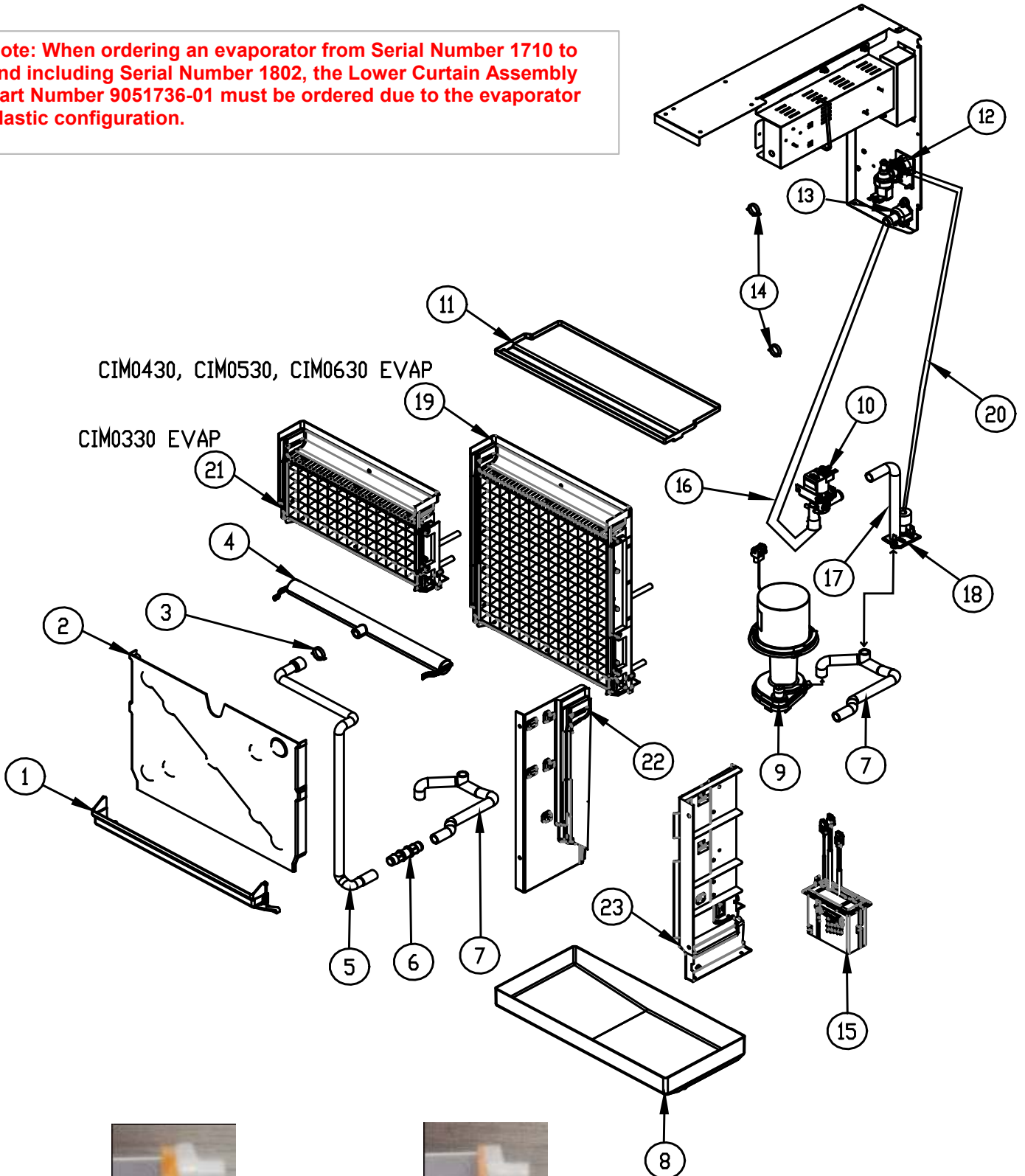
Ice-O-Matic
 11100 East 45th Ave.
 Denver Co. 80239
 800-423-3367



| Item No. | Model Number | | | | | Description |
|----------|--------------|-------------|-------------|-------------|-------------|---|
| | CIM0330 | CIM0430 | CIM0436 | CIM0530 | CIM0636 | |
| 1 | 2031540-01S | 2031540-01S | 2031540-01S | 2031540-01S | 2031540-01S | Front Panel |
| 2 | 9031237-01 | 9031237-01 | 9031237-01 | 9031237-01 | 9031237-01 | Front Panel Screws |
| 3 | 3022007-02 | 3022007-02 | 3022007-02 | 3022007-02 | 3022007-02 | Left Side Side Panel |
| 4 | 2101496-02S | 2101496-02S | 2101496-02S | 2101496-02S | 2101496-02S | Top Panel-Air Cooled |
| 5 | 3022012-03 | 3022012-03 | 3022012-03 | 3022012-03 | 3022012-03 | Top Panel-Remote and Water Cooled |
| 6 | 9031046-01 | 9031046-01 | 9031046-01 | 9031046-01 | 9031046-01 | Rear Cover Screws |
| 7 | 3013634-01 | 3013634-01 | 3013634-01 | 3013634-01 | 3013634-01 | Rear Cover |
| 8 | 3022007-03 | 3022007-03 | 3022007-03 | 3022007-03 | 3022007-03 | Right Side Panel-Air, Remote and Water Cooled |
| 9 | 2101495-01S | 2101495-01S | 2101495-01S | 2101495-01S | 2101495-01S | Right Side Panel-Air Cooled |
| 10 | 3013674-01 | 3013674-01 | 3013674-01 | 3013674-01 | 3013674-01 | Junction Box Cover |
| 11 | 9031046-01 | 9031046-01 | 9031046-01 | 9031046-01 | 9031046-01 | Junction Box Screw |
| 12 | 2021786-01 | 2021786-01 | 2021786-01 | 2021786-01 | 2021786-01 | Left Front Corner Post |
| 13 | 2021786-02 | 2021786-02 | 2021786-02 | 2021786-02 | 2021786-02 | Right Front Corner post |
| 14 | 3013637-02 | 3013637-02 | 3013637-02 | 3013637-02 | 3013637-02 | Brace 30 Inch |
| 15 | 3013636-01 | 3013636-01 | 3013636-01 | 3013636-01 | 3013636-01 | Rear Brace |
| 16 | 9051725-02 | 9051725-02 | 9051725-02 | 9051725-02 | 9051725-02 | Base |
| 17 | 2021784-01 | 2021784-01 | 2021784-01 | 2021784-01 | 2021784-01 | Front Left Brace |
| 18 | 2021785-01 | 2021785-01 | 2021785-01 | 2021785-01 | 2021785-01 | Front Right Brace |
| 19 | 2021780-01 | 2021780-01 | 2021780-01 | 2021780-01 | 2021780-01 | Right Side Framework 30"Assembly |
| 20 | 2021781-01 | 2021781-01 | 2021781-01 | 2021781-01 | 2021781-01 | Left Side Framework 30"Assembly |
| 21 | 9011369-02 | 9011369-02 | 9011369-02 | 9011369-02 | 9011369-02 | Elevation Skid 30 Inch |
| 22 | 9011378-01 | 9011378-01 | 9011378-01 | 9011378-01 | 9011378-01 | Carton Liner 30 Inch |
| 23 | 9051765-01 | 9051765-01 | 9051765-01 | 9051765-01 | 9051765-01 | Shipping Bracket 2 Req. (Field Installed) |
| 24 | 9011374-02 | 9011374-02 | 9011374-02 | 9011374-02 | 9011374-02 | Carton, Elevation 30 Inch |
| 25 | 9011320-15 | 9011320-15 | 9011320-15 | 9011320-15 | 9011320-15 | Corner Post (Each), Elevation, (4 Required) |
| | 9031026-04P | 9031026-04P | 9031026-04P | 9031026-04P | 9031026-04P | Pop Rivets Not Shown (Package of 10) |

| | CIM0335 | | CIM0435 | CIM0535 | CIM0635 | Description |
|----|-------------|--|-------------|-------------|-------------|---|
| 1 | 2031540-01S | | 2031540-01S | 2031540-01S | 2031540-01S | Front Panel |
| 2 | 9031237-01 | | 9031237-01 | 9031237-01 | 9031237-01 | Front Panel Screws |
| 3 | 3022007-02 | | 3022007-02 | 3022007-02 | 3022007-02 | Left Side Side Panel |
| 4 | 2101496-02S | | 2101496-02S | 2101496-02S | 2101496-02S | Top Panel-Air Cooled |
| 5 | Not Used | | Not Used | 3022012-03 | 3022012-03 | Top Panel-Remote and Water Cooled |
| 6 | 9031046-01 | | 9031046-01 | 9031046-01 | 9031046-01 | Rear Cover Screws |
| 7 | 3013634-01 | | 3013634-01 | 3013634-01 | 3013634-01 | Rear Cover |
| 8 | Not Used | | Not Used | 3022007-03 | 3022007-03 | Right Side Panel-Remote and Water Cooled |
| 9 | 2101495-01S | | 2101495-01S | 2101495-01S | 2101495-01S | Right Side Panel-Air Cooled |
| 10 | 3013674-01 | | 3013674-01 | 3013674-01 | 3013674-01 | Junction Box Cover |
| 11 | 9031046-01 | | 9031046-01 | 9031046-01 | 9031046-01 | Junction Box Screw |
| 12 | 2021786-01 | | 2021786-01 | 2021786-01 | 2021786-01 | Left Front Corner Post |
| 13 | 2021786-02 | | 2021786-02 | 2021786-02 | 2021786-02 | Right Front Corner post |
| 14 | 3013637-02 | | 3013637-02 | 3013637-02 | 3013637-02 | Brace 30 Inch |
| 15 | 3013636-01 | | 3013636-01 | 3013636-01 | 3013636-01 | Rear Brace |
| 16 | 9051725-02 | | 9051725-02 | 9051725-02 | 9051725-02 | Base |
| 17 | 2021784-01 | | 2021784-01 | 2021784-01 | 2021784-01 | Front Left Brace |
| 18 | 2021785-01 | | 2021785-01 | 2021785-01 | 2021785-01 | Front Right Brace |
| 19 | 2021780-01 | | 2021780-01 | 2021780-01 | 2021780-01 | Right Side Framework 30"Assembly |
| 20 | 2021781-01 | | 2021781-01 | 2021781-01 | 2021781-01 | Left Side Framework 30"Assembly |
| 21 | 9011369-02 | | 9011369-02 | 9011369-02 | 9011369-02 | Elevation Skid 30 Inch |
| 22 | 9011378-01 | | 9011378-01 | 9011378-01 | 9011378-01 | Carton Liner 30 Inch |
| 23 | 9051765-01 | | 9051765-01 | 9051765-01 | 9051765-01 | Shipping Bracket 2 Req. (Field Installed) |
| 24 | 9011374-02 | | 9011374-02 | 9011374-02 | 9011374-02 | Carton, Elevation 30 Inch |
| 25 | 9011320-15 | | 9011320-15 | 9011320-15 | 9011320-15 | Corner Post (Each), Elevation, (4 Required) |
| | 9031026-04P | | 9031026-04P | 9031026-04P | 9031026-04P | Pop Rivets Not Shown (Package of 10) |

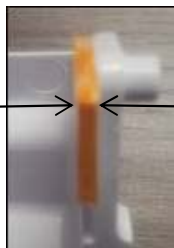
Note: When ordering an evaporator from Serial Number 1710 to and including Serial Number 1802, the Lower Curtain Assembly Part Number 9051736-01 must be ordered due to the evaporator plastic configuration.



CIM0430, CIM0530, CIM0630 EVAP

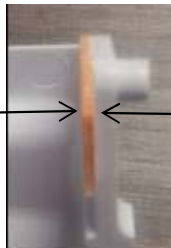
CIM0330 EVAP

.100



1051225-01

.055



1051225-02

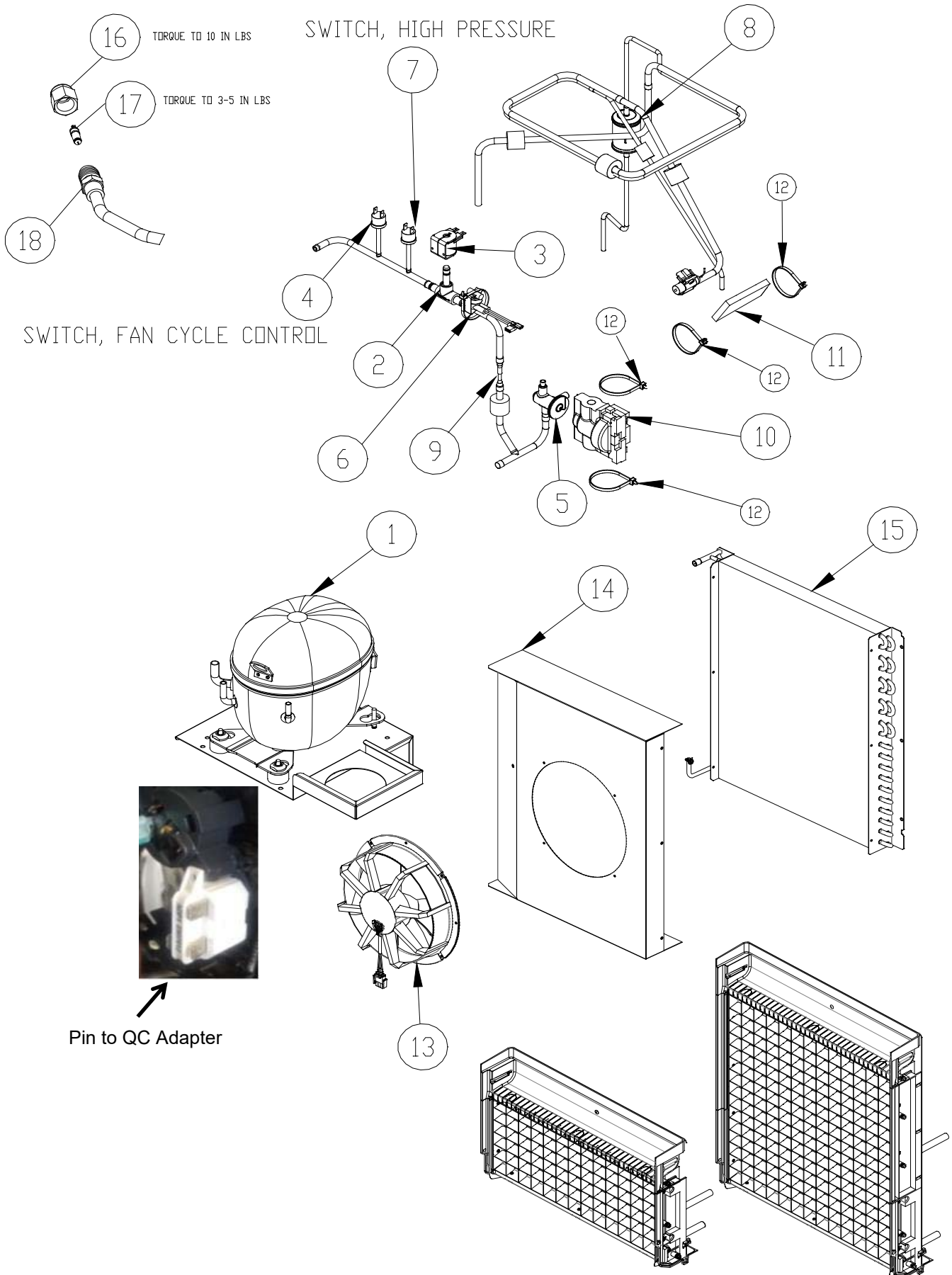
Lower Curtain Dimensions

CIM Service Parts

Water System

Important-Check the CIM Model Number and Serial Number when ordering the Lower Curtain

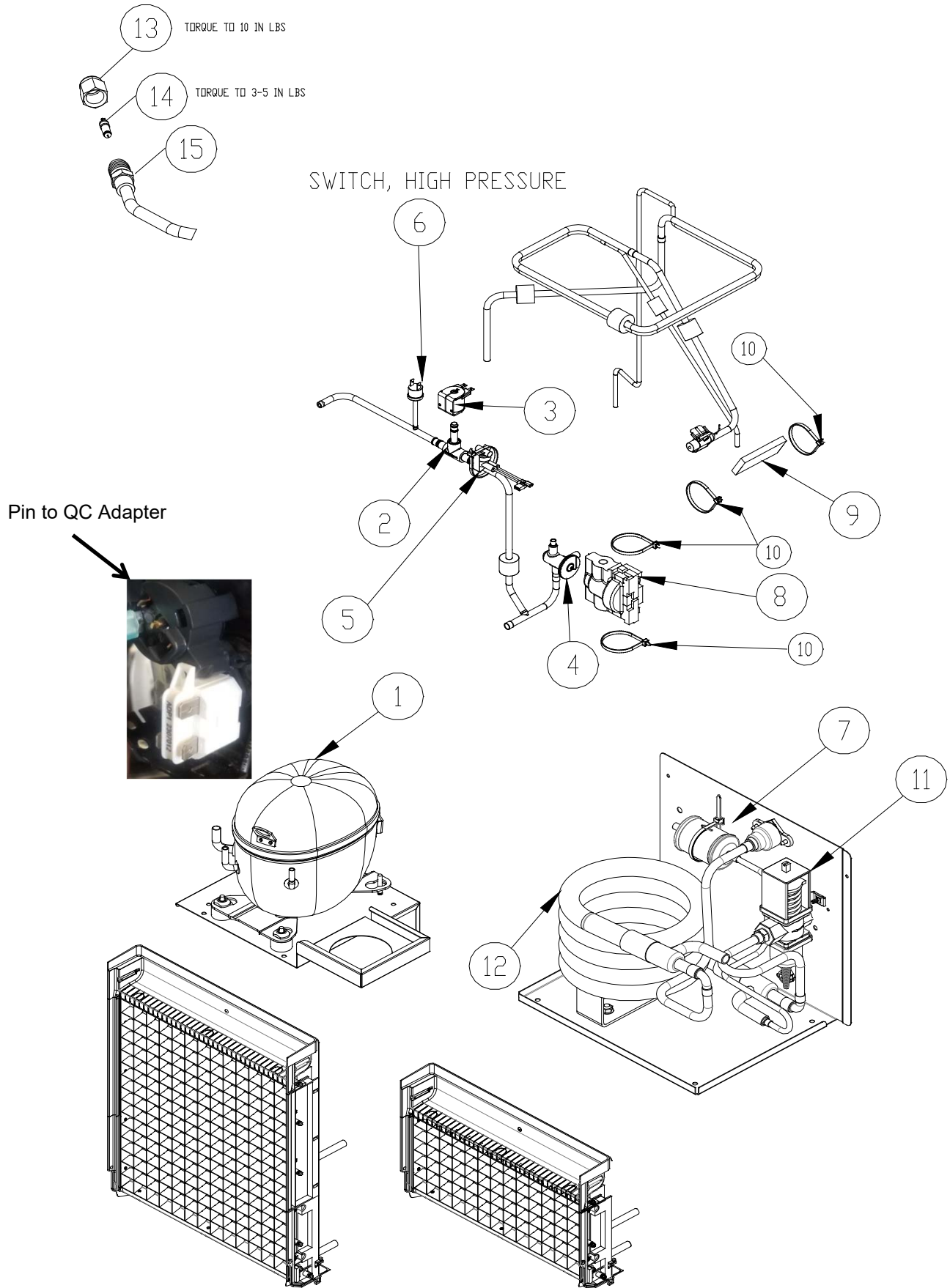
| Item No. | Model Number | | | | | Description |
|----------|---------------------------|-------------|--------------|-------------|--------------|--|
| | CIM0330 | CIM0430 | CIM0436 | CIM0530 | CIM0636 | |
| 1 | 9051736-01 | 9051736-01 | 9051736-01 | 9051736-01 | 9051736-01 | Lower Curtain Assembly From SN 1803 |
| | 1051225-02 | 1051225-02 | 1051225-02 | 1051225-02 | 1051225-02 | Lower Curtain Assembly From SN 1801 to 1802 |
| | 1051225-01 | 1051225-01 | 1051225-01 | 1051225-01 | 1051225-01 | Lower Curtain Assembly From SN 1710 to 1712 |
| 2 | 9051726-01 | 9051726-02 | 9051726-02 | 9051726-02 | 9051726-02 | Evaporator Cover |
| 3 | 9021010-06 | 9021010-06 | 9021010-06 | 9021010-06 | 9021010-06 | Hose Clamp, Plastic |
| 4 | 9051766-01 | 9051766-01 | 9051766-01 | 9051766-01 | 9051766-01 | Water Distribution Tube Assembly |
| 5 | 9051749-01 | 9051749-02 | 9051749-02 | 9051749-02 | 9051749-02 | Water Tube, Upper |
| 6 | 9091177-01 | 9091177-01 | 9091177-01 | 9091177-01 | 9091177-01 | Coupler, Straight, 5/8 I.D. Tubing |
| 7 | 9051748-01 | 9051748-01 | 9051748-01 | 9051748-01 | 9051748-01 | Water Tube, Sump |
| 8 | 9051737-01 | 9051737-01 | 9051737-01 | 9051737-01 | 9051737-01 | Sump/Water Trough |
| 9 | 2062336-01S | 2062336-01S | 2062336-02S | 2062336-01S | 2062336-02S | Water Pump |
| 10 | 9041105-04 | 9041105-04 | 9041105-05 | 9041105-04 | 9041105-05 | Purge Valve |
| 11 | 9051738-01 | 9051738-01 | 9051738-01 | 9051738-01 | 9051738-01 | Top Cover |
| 12 | 9041108-01 | 9041108-01 | 9041108-02 | 9041108-01 | 9041108-02 | Water Inlet Valve |
| 13 | 9091140-01 | 9091140-01 | 9091140-01 | 9091140-01 | 9091140-01 | Drain Fitting |
| 14 | 9021010-04 | 9021010-04 | 9021010-04 | 9021010-04 | 9021010-04 | Hose Clamp, Plastic |
| 15 | 1051224-01 | 1051224-01 | 1051224-01 | 1051224-01 | 1051224-01 | Float Switch Assembly (Includes Instructions) |
| 16 | 9051781-31 | 9051781-31 | 9051781-31 | 9051781-31 | 9051781-31 | Purge Valve Tubing to Drain |
| 17 | 9051541-01 | 9051541-01 | 9051541-01 | 9051541-01 | 9051541-01 | Purge Valve Tube to Inlet Outlet Bracket |
| 18 | 9051739-01 | 9051739-01 | 9051739-01 | 9051739-01 | 9051739-01 | Inlet Outlet Bracket |
| 19 | | 1051223-03 | 1051223-03 | 1051223-03 | 1051223-03 | Evaporator-FULL Cube = 7/8 x 7/8 x 7/8 |
| 19 | | 1051223-04 | 1051223-04 | 1051223-04 | 1051223-04 | Evaporator-HALF Cube = 3/8 x 7/8 x 7/8 |
| 20 | 9051782-36 | 9051782-36 | 9051782-36 | 9051782-36 | 9051782-36 | Water Inlet Valve to Inlet Outlet Bracket Tube |
| 21 | 1051223-01 | | | | | Evaporator-FULL Cube = 7/8 x 7/8 x 7/8 |
| 21 | 1051223-02 | | | | | Evaporator-HALF Cube = 3/8 x 7/8 x 7/8 |
| 22 | 3051729-01 | 3051729-01 | 3051729-01 | 3051729-01 | 3051729-01 | Evaporator Support Left Hand Side |
| 23 | 9051730-01 | 9051730-01 | 9051730-01 | 9051730-01 | 9051730-01 | Evaporator Support Right Hand Side |
| | 115/60/1 | 115/60/1 | 208-230/60/1 | 115/60/1 | 208-230/60/1 | ← Machine Voltage |
| | | | | | | ← Machine Voltage |
| Item No. | Model Number 220-240/50/1 | | | | | Description |
| | CIM0335 | | CIM0435 | CIM0535 | CIM0635 | |
| 1 | 9051736-01 | 9051736-01 | 9051736-01 | 9051736-01 | 9051736-01 | Lower Curtain Assembly From SN 1803 |
| | 1051225-02 | 1051225-02 | 1051225-02 | 1051225-02 | 1051225-02 | Lower Curtain Assembly From SN 1801 to 1802 |
| | 1051225-01 | 1051225-01 | 1051225-01 | 1051225-01 | 1051225-01 | Lower Curtain Assembly From SN 1710 to 1712 |
| 2 | 9051726-01 | | 9051726-02 | 9051726-02 | 9051726-02 | Evaporator Cover |
| 3 | 9021010-05 | | 9021010-05 | 9021010-05 | 9021010-05 | Hose Clamp, Plastic |
| 4 | 9051766-01 | | 9051766-01 | 9051766-01 | 9051766-01 | Water Distribution Tube Assembly |
| 5 | 9051749-01 | | 9051749-02 | 9051749-02 | 9051749-02 | Water Tube, Upper |
| 6 | 9091177-01 | | 9091177-01 | 9091177-01 | 9091177-01 | Coupler, Straight, 5/8 I.D. Tubing |
| 7 | 9051748-01 | | 9051748-01 | 9051748-01 | 9051748-01 | Water Tube, Sump |
| 8 | 9051737-01 | | 9051737-01 | 9051737-01 | 9051737-01 | Sump/Water Trough |
| 9 | 2062336-02S | | 2062336-02S | 2062336-02S | 2062336-02S | Water Pump, Includes Brackets |
| 10 | 9041105-05 | | 9041105-05 | 9041105-05 | 9041105-05 | Purge Valve |
| 11 | 9051738-01 | | 9051738-01 | 9051738-01 | 9051738-01 | Top Cover |
| 12 | 9041108-01 | | 9041108-02 | 9041108-01 | 9041108-02 | Water Inlet Valve |
| 13 | 9091140-01 | | 9091140-01 | 9091140-01 | 9091140-01 | Drain Fitting |
| 14 | 9021010-04 | | 9021010-04 | 9021010-04 | 9021010-04 | Hose Clamp, Plastic |
| 15 | 1051224-01 | | 1051224-01 | 1051224-01 | 1051224-01 | Float Switch Assembly (Includes Instructions) |
| 16 | 9051781-31 | | 9051781-31 | 9051781-31 | 9051781-31 | Purge Valve Tubing to Drain |
| 17 | 9051541-01 | | 9051541-01 | 9051541-01 | 9051541-01 | Purge Valve Tube to Inlet Outlet Bracket |
| 18 | 9051739-01 | | 9051739-01 | 9051739-01 | 9051739-01 | Inlet Outlet Bracket |
| 19 | | | 1051223-03 | 1051223-03 | 1051223-03 | Evaporator-FULL Cube = 7/8 x 7/8 x 7/8 |
| 19 | | | 1051223-04 | 1051223-04 | 1051223-04 | Evaporator-HALF Cube = 3/8 x 7/8 x 7/8 |
| 20 | 3051270-36 | | 3051270-36 | 3051270-36 | 3051270-36 | Water Inlet Valve to Inlet Outlet Bracket Tube |
| 21 | 1051223-01 | | | | | Evaporator-FULL Cube = 7/8 x 7/8 x 7/8 |
| 21 | 1051223-02 | | | | | Evaporator-HALF Cube = 3/8 x 7/8 x 7/8 |
| 22 | 9051729-01 | 9051729-01 | 9051729-01 | 9051729-01 | 9051729-01 | Evaporator Support Left Hand Side |
| 23 | 9051730-01 | 9051730-01 | 9051730-01 | 9051730-01 | 9051730-01 | Evaporator Support Right Hand Side |



REFERENCE PAGE 4 AND 5 FOR EVAPORATOR

| Item No. | Model Number | | | | | Description |
|----------|--------------|-------------|--------------|-------------|--------------|--|
| | CIM0330A | CIM0430A | CIM0436A | CIM0530A | CIM0636A | |
| 1 | 9181163-101 | 9181163-101 | 9181164-101 | 9181137-11B | 9181145-11A | Compressor Kit |
| 2 | 9151192-03 | 9151192-03 | 9151192-03 | 9151192-01 | 9151192-01 | Hot Gas Valve Body |
| 3 | 9151193-01 | 9151193-01 | 9151193-02 | 9151193-01 | 9151193-02 | Hot Gas Valve Coil |
| 4 | 9041106-01 | 9041106-01 | 9041106-01 | 9041106-01 | 9041106-01 | Switch, Fan Cycle |
| 5 | 9151154-101 | 9151149-101 | 9151149-101 | 9151149-101 | 9151149-101 | TXV |
| 6 | 9041098-02 | 9041098-02 | 9041098-02 | 9041098-02 | 9041098-02 | High Temp Switch |
| 7 | 9041111-01 | 9041111-01 | 9041111-01 | 9041111-01 | 9041111-01 | Switch, High Pressure |
| 8 | 9151163-01 | 9151163-01 | 9151163-01 | 9151163-01 | 9151163-01 | Drier (Included in Compressor Kit) |
| 9 | 9091179-01 | 9091179-01 | 9091179-01 | 9091179-01 | Not Used | Restrictor |
| 10 | 9131544-01 | 9131544-01 | 9131544-01 | 9131544-01 | 9131544-01 | Insulation, TXV |
| 11 | 9131143-07 | 9131143-07 | 9131143-07 | 9131143-07 | 9131143-07 | Insulation, Bulb |
| 12 | 9021021-01 | 9021021-01 | 9021021-01 | 9021021-01 | 9021021-01 | Cable Tie-For TXV and Bulb Insulation |
| 13 | 9161135-01 | 9161135-01 | 9161135-02 | 9161135-01 | 9161135-02 | Fan Motor Assembly |
| 14 | 3013639-01 | 3013639-01 | 3013639-01 | 3013639-01 | 3013639-01 | Fan Shroud |
| 15 | 9141152-01 | 9141152-01 | 9141152-01 | 9141152-01 | 9141152-01 | Condenser |
| 16 | 9091086-03 | 9091086-03 | 9091086-03 | 9091086-03 | 9091086-03 | Service Valve Cap |
| 17 | 9091086-02 | 9091086-02 | 9091086-02 | 9091086-02 | 9091086-02 | Service Valve Core |
| 18 | 9091086-01 | 9091086-01 | 9091086-01 | 9091086-01 | 9091086-01 | Service Valve Stem |
| | 115/60/1 | 115/60/1 | 208-230/60/1 | 115/60/1 | 208-230/60/1 | ← Machine Voltage |
| | CIM0330A | CIM0430A | CIM0436A | CIM0530A | CIM0636A | Starting Components (Included in Comp Kit) |
| | 9181163-101 | 9181163-101 | 9181164-101 | 9181137-11B | 9181145-11A | Compressor Kit |
| | 9181003-50 | 9181003-50 | 9181003-26 | 9181003-50 | 9181003-52 | Start Capacitor |
| | 9181009-25 | 9181009-25 | 9181009-08 | 9181009-25 | 9181009-19 | Run Capacitor |
| | 9181010-33 | 9181010-33 | 9181010-27 | 9181010-14 | 9181010-27 | Compressor Relay |
| | 9181005-49 | 9181005-49 | 9181005-50 | 9181005-45 | Internal | Overload |
| | 9181195-01 | 9181195-01 | | | | Pin to QC Adapter |

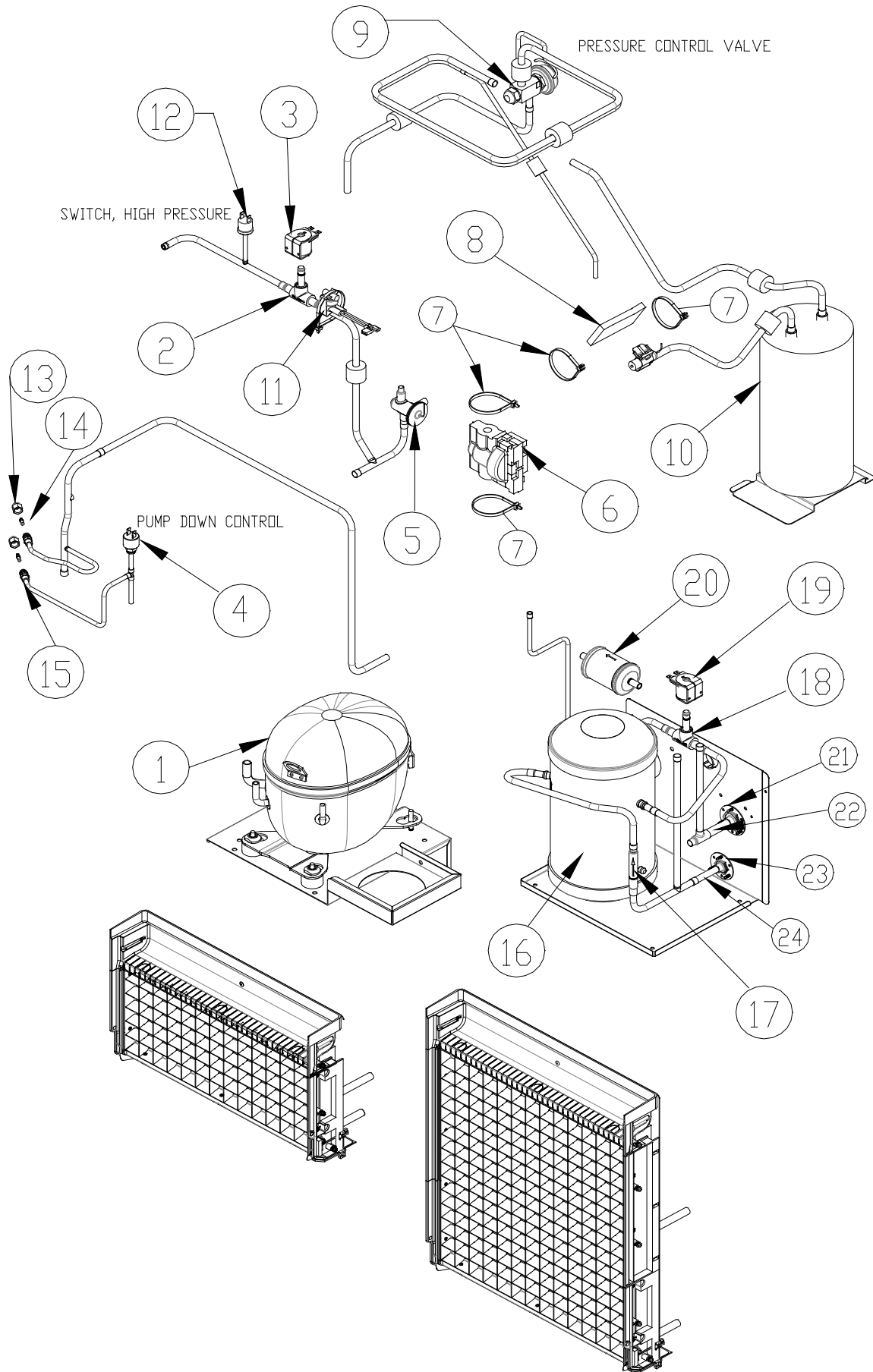
| Item No. | Model Number 220-240/50/1 | | | | | Description |
|----------|---------------------------|--|-------------|-------------|-------------|--|
| | CIM0335A | | CIM0435A | CIM0535A | CIM0635A | |
| 1 | 9181165-101 | | 9181138-11A | 9181166-101 | 9181147-11A | Compressor Kit |
| 2 | 9151192-03 | | 9151192-03 | 9151192-01 | 9151192-01 | Hot Gas Valve Body |
| 3 | 9151193-02 | | 9151193-02 | 9151193-02 | 9151193-02 | Hot Gas Valve Coil |
| 4 | 9041106-01 | | 9041106-01 | 9041106-01 | 9041106-01 | Switch, Fan Cycle |
| 5 | 9151154-101 | | 9151149-101 | 9151149-101 | 9151149-101 | TXV |
| 6 | 9041098-02 | | 9041098-02 | 9041098-02 | 9041098-02 | High Temp Switch |
| 7 | 9041111-01 | | 9041111-01 | 9041111-01 | 9041111-01 | Switch, High Pressure |
| 8 | 9151163-01 | | 9151163-01 | 9151163-01 | 9151163-01 | Drier (Included in Compressor Kit) |
| 9 | 9091179-01 | | 9091179-01 | 9091179-01 | Not Used | Restrictor |
| 10 | 9131544-01 | | 9131544-01 | 9131544-01 | 9131544-01 | Insulation, TXV |
| 11 | 9131143-07 | | 9131143-07 | 9131143-07 | 9131143-07 | Insulation, Bulb |
| 12 | 9021021-01 | | 9021021-01 | 9021021-01 | 9021021-01 | Cable Tie-For TXV and Bulb Insulation |
| 13 | 9161135-02 | | 9161135-02 | 9161135-02 | 9161135-02 | Fan Motor Assembly |
| 14 | 3013639-01 | | 3013639-01 | 3013639-01 | 3013639-01 | Fan Shroud |
| 15 | 9141152-01 | | 9141152-01 | 9141152-01 | 9141152-01 | Condenser |
| 16 | 9091086-03 | | 9091086-03 | 9091086-03 | 9091086-03 | Service Valve Cap |
| 17 | 9091086-02 | | 9091086-02 | 9091086-02 | 9091086-02 | Service Valve Core |
| 18 | 9091086-01 | | 9091086-01 | 9091086-01 | 9091086-01 | Service Valve Stem |
| | CIM0335A | | CIM0435A | CIM0535A | CIM0635A | Starting Components (Included in Comp Kit) |
| | 9181165-101 | | 9181138-11A | 9181166-101 | 9181147-11A | Compressor Kit |
| | 9181003-54 | | 9181003-32 | 9181003-32 | 9181003-54 | Start Capacitor |
| | 9181009-26 | | 9181009-26 | 9181009-28 | 9181009-17 | Run Capacitor |
| | 9181010-27 | | 9181010-32 | 9181010-34 | 9181010-01 | Compressor Relay |
| | 9181005-50 | | 9181005-46 | 9181005-51 | Internal | Overload |



REFERENCE PAGE 4 AND 5 FOR EVAPORATOR

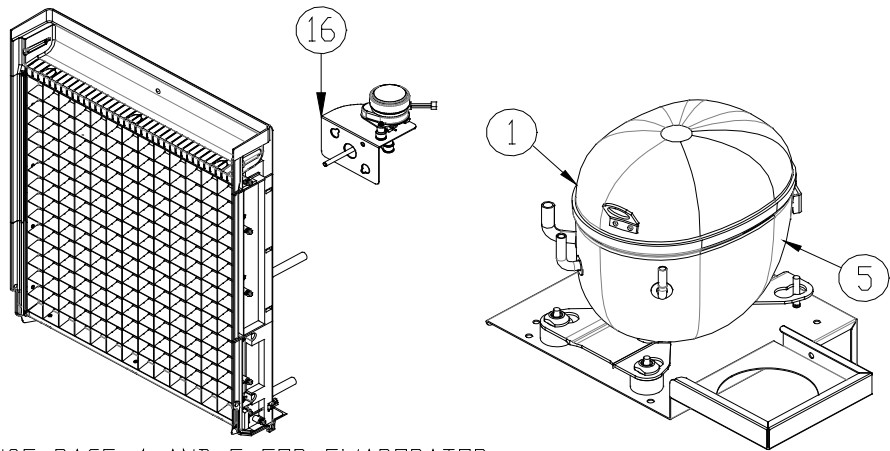
| Item No. | Model Number | | | | | Description |
|----------|--------------|-------------|--------------|-------------|--------------|--|
| | CIM0330W | CIM0430W | CIM0436W | CIM0530W | CIM0636W | |
| 1 | 9181163-101 | 9181163-101 | 9181164-101 | 9181137-11B | 9181145-11A | Compressor Kit |
| 2 | 9151192-03 | 9151192-03 | 9151192-03 | 9151192-03 | 9151192-03 | Hot Gas Valve Body |
| 3 | 9151193-01 | 9151193-01 | 9151193-02 | 9151193-01 | 9151193-02 | Hot Gas Valve Coil |
| 4 | 9151154-101 | 9151149-101 | 9151149-101 | 9151149-101 | 9151149-101 | TXV |
| 5 | 9041098-02 | 9041098-02 | 9041098-02 | 9041098-02 | 9041098-02 | High Temp Switch |
| 6 | 9041111-01 | 9041111-01 | 9041111-01 | 9041111-01 | 9041111-01 | Switch, High Pressure |
| 7 | 9151163-01 | 9151163-01 | 9151163-01 | 9151163-01 | 9151163-01 | Drier (Included in Compressor Kit) |
| 8 | 9131544-01 | 9131544-01 | 9131544-01 | 9131544-01 | 9131544-01 | Insulation, TXV |
| 9 | 9131143-07 | 9131143-07 | 9131143-07 | 9131143-07 | 9131143-07 | Insulation, Bulb |
| 10 | 9021021-01 | 9021021-01 | 9021021-01 | 9021021-01 | 9021021-01 | Cable Tie-For TXV and Bulb Insulation |
| 11 | 9041059-01 | 9041059-01 | 9041059-01 | 9041059-01 | 9041059-01 | Water Regulator |
| 12 | 9141156-01 | 9141156-01 | 9141156-01 | 9141156-01 | 9141156-01 | Condenser |
| 13 | 9091086-03 | 9091086-03 | 9091086-03 | 9091086-03 | 9091086-03 | Service Valve Cap |
| 14 | 9091086-02 | 9091086-02 | 9091086-02 | 9091086-02 | 9091086-02 | Service Valve Core |
| 15 | 9091086-01 | 9091086-01 | 9091086-01 | 9091086-01 | 9091086-01 | Service Valve Stem |
| | 115/60/1 | 115/60/1 | 208-230/60/1 | 115/60/1 | 208-230/60/1 | ← Machine Voltage |
| | CIM0330A | CIM0430A | CIM0436A | CIM0530A | CIM0636A | Starting Components (Included in Comp Kit) |
| | 9181163-101 | 9181163-101 | 9181164-101 | 9181137-11B | 9181145-11A | Compressor Kit |
| | 9181003-50 | 9181003-50 | 9181003-26 | 9181003-50 | 9181003-52 | Start Capacitor |
| | 9181009-25 | 9181009-25 | 9181009-08 | 9181009-25 | 9181009-19 | Run Capacitor |
| | 9181010-33 | 9181010-33 | 9181010-27 | 9181010-14 | 9181010-27 | Compressor Relay |
| | 9181005-49 | 9181005-49 | 9181005-50 | 9181005-45 | Internal | Overload |
| | 9181195-01 | 9181195-01 | | | | Pin to QC Adapter |

| Item No. | Model Number 220-240/50/1 | | | | Machine Voltage | Description |
|----------|---------------------------|--|--|-------------|-----------------|--|
| | | | | | | |
| 1 | | | | CIM0535W | CIM0635W | Compressor Kit |
| 2 | | | | 9151192-03 | 9151192-03 | Hot Gas Valve Body |
| 3 | | | | 9151193-02 | 9151193-02 | Hot Gas Valve Coil |
| 4 | | | | 9151149-101 | 9151149-101 | TXV |
| 5 | | | | 9041098-02 | 9041098-02 | High Temp Switch |
| 6 | | | | 9041111-01 | 9041111-01 | Switch, High Pressure |
| 7 | | | | 9151163-01 | 9151163-01 | Drier (Included in Compressor Kit) |
| 8 | | | | 9131544-01 | 9131544-01 | Insulation, TXV |
| 9 | | | | 9131143-07 | 9131143-07 | Insulation, Bulb |
| 10 | | | | 9021021-01 | 9021021-01 | Cable Tie-For TXV and Bulb Insulation |
| 11 | | | | 9041059-01 | 9041059-01 | Water Regulator |
| 12 | | | | 9141156-01 | 9141156-01 | Condenser |
| 13 | | | | 9091086-03 | 9091086-03 | Service Valve Cap |
| 14 | | | | 9091086-02 | 9091086-02 | Service Valve Core |
| 15 | | | | 9091086-01 | 9091086-01 | Service Valve Stem |
| | | | | CIM0535A | CIM0635A | Starting Components (Included in Comp Kit) |
| | | | | 9181166-101 | 9181147-11A | Compressor Kit |
| | | | | 9181003-32 | 9181003-54 | Start Capacitor |
| | | | | 9181009-28 | 9181009-17 | Run Capacitor |
| | | | | 9181010-34 | 9181010-01 | Compressor Relay |
| | | | | 9181005-51 | Internal | Overload |

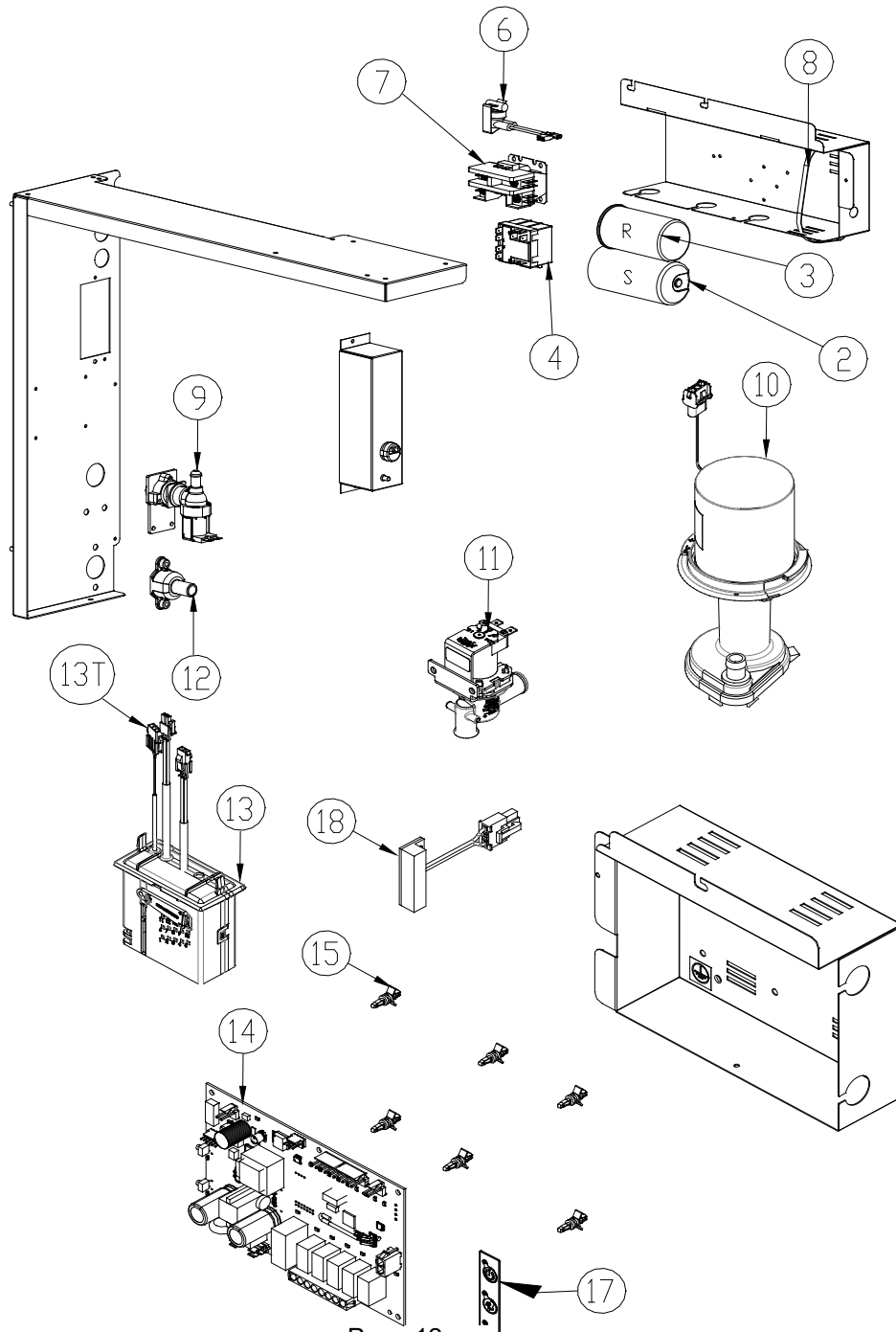


REFERENCE PAGE 4 AND 5 FOR EVAPORATOR

| Item No. | Model Number | | | Description |
|----------|--------------|--------------|--------------|---|
| | CIM0530R | CIM0535R | CIM0636R | |
| 1 | 9181137-11B | 9181166-101 | 9181145-11A | Compressor Kit |
| 2 | 9151192-01 | 9151192-01 | 9151192-01 | Hot Gas Valve Body |
| 3 | 9151193-01 | 9151193-02 | 9151193-02 | Hot Gas Valve Coil |
| 4 | 9041092-02 | 9041092-02 | 9041092-02 | Pump Down Control |
| 5 | 9151149-101 | 9151149-101 | 9151149-101 | TXV |
| 6 | 9131544-01 | 9131544-01 | 9131544-01 | Insulation, TXV |
| 7 | 9021025-01 | 9021025-01 | 9021025-01 | Cable Tie-For TXV and Bulb Insulation |
| 8 | 9131143-07 | 9131143-07 | 9131143-07 | Insulation, TXV Bulb |
| 9 | 9151146-01 | 9151146-01 | Not Used | Pressure Control Valve |
| 10 | 9151071-01 | 9151071-01 | Not Used | Accumulator |
| 11 | 9041098-02 | 9041098-02 | 9041098-02 | High Temp Switch |
| 12 | 9041111-01 | 9041111-01 | 9041111-01 | Switch, High Pressure |
| 13 | 9091086-03 | 9091086-03 | 9091086-03 | Service Valve Cap |
| 14 | 9091086-02 | 9091086-02 | 9091086-02 | Service Valve Core |
| 15 | 9091086-01 | 9091086-01 | 9091086-01 | Service Valve Stem |
| 16 | 9151074-01 | 9151074-01 | 9151074-01 | Receiver |
| 17 | 9151139-01 | 9151139-01 | 9151139-01 | Check Valve |
| 18 | 9151192-02 | 9151192-02 | 9151192-02 | Liquid Line Solenoid |
| 19 | 9151193-01 | 9151193-02 | 9151193-02 | Liquid Line Coil |
| 20 | 9151163-03 | 9151163-03 | 9151163-03 | Drier (Included in Compressor Kit) |
| 21 | 9091001-09 | 9091001-09 | 9091001-09 | 1/2 Inch Coupling Flange (Large) |
| 22 | 9091001-12 | 9091001-12 | 9091001-12 | 1/2 Inch Coupling (Large) |
| 23 | 9091001-03 | 9091001-03 | 9091001-03 | 3/8 Inch Coupling Flange (Small) |
| 24 | 9091001-11 | 9091001-11 | 9091001-11 | 3/8 Inch Coupling (Small) |
| | CIM0530R | CIM0535A | CIM0636R | Starting Components (Included in Comp Kit) |
| | 9181137-11B | 9181166-101 | 9181145-11A | Compressor Kit |
| | 9181003-50 | 9181003-32 | 9181003-52 | Start Capacitor |
| | 9181009-25 | 9181009-28 | 9181009-19 | Run Capacitor |
| | 9181010-14 | 9181010-34 | 9181010-27 | Potential Relay |
| | 9181005-45 | 9181005-51 | Internal | Overload |
| | 115/60/1 | 220-240/50/1 | 208-230/60/1 | ← Machine Voltage |



REFERENCE PAGE 4 AND 5 FOR EVAPORATOR

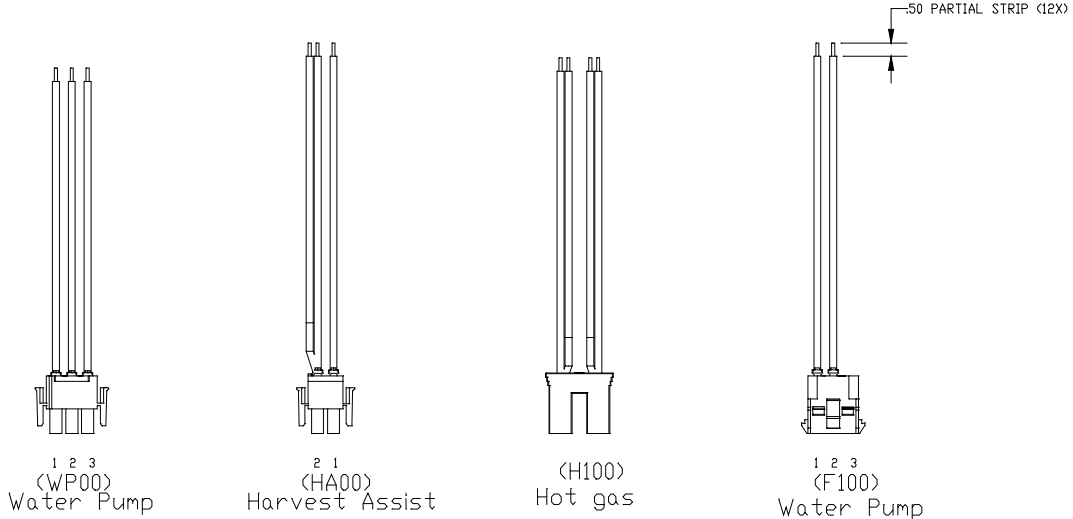


| Item No. | Model Number | | | | | Description |
|----------|--------------|-------------|--------------|-------------|--------------|---|
| | CIM0330A | CIM0430A | CIM0436A | CIM0530A | CIM0636A | |
| 1 | 9181163-101 | 9181163-101 | 9181164-101 | 9181137-11B | 9181145-11A | Compressor |
| 2 | 9181003-50 | 9181003-50 | 9181003-26 | 9181003-50 | 9181003-52 | Start Capacitor |
| 3 | 9181009-25 | 9181009-25 | 9181009-08 | 9181009-25 | 9181009-19 | Run Capacitor |
| 4 | 9181010-33 | 9181010-33 | 9181010-27 | 9181010-14 | 9181010-27 | Potential Relay |
| 5 | 9181005-49 | 9181005-49 | 9181005-50 | 9181005-45 | Internal | Overload |
| 6 | 9041098-02 | 9041098-02 | 9041098-02 | 9041098-02 | 9041098-02 | Switch, High Temp |
| 7 | 9101002-07 | 9101002-07 | 9101002-06 | 9101002-07 | 9101002-06 | Contactora |
| 8 | 9021096-01 | 9021096-01 | 9021096-01 | 9021096-01 | 9021096-01 | Cable Tie, Metal |
| 9 | 9041108-01 | 9041108-01 | 9041108-02 | 9041108-01 | 9041108-02 | Valve, Water Inlet |
| 10 | 2062336-01 | 2062336-01 | 2062336-02 | 2062336-01 | 2062336-02 | Water Pump |
| 11 | 9041105-04 | 9041105-04 | 9041105-05 | 9041105-04 | 9041105-05 | Purge Valve |
| 12 | 9091140-01 | 9091140-01 | 9091140-01 | 9091140-01 | 9091140-01 | Purge Drain |
| 13 | 1051224-01 | 1051224-01 | 1051224-01 | 1051224-01 | 1051224-01 | Float Switch Assembly (Includes Instructions) |
| 13T | 9041112-01 | 9041112-01 | 9041112-01 | 9041112-01 | 9041112-01 | Thermister in Float Housing |
| 14 | 9101368-02 | 9101368-02 | 9101368-02 | 9101368-02 | 9101368-02 | Board Dual Voltage |
| 15 | 9051698-01P | 9051698-01P | 9051698-01P | 9051698-01P | 9051698-01P | Plastic Standoff, Control Board (Pkg of 10) |
| 16 | 9161134-01 | 9161134-01 | 9161134-02 | 9161134-01 | 9161134-02 | Harvest Assist |
| 17 | 9101394-01 | 9101394-01 | 9101394-01 | 9101394-01 | 9101394-01 | Membrane Switch (ON-OFF) (Includes Cable) |
| 18 | 9101379-01 | 9101379-01 | 9101379-01 | 9101379-01 | 9101379-01 | Switch, Magnetic Reed (Bin Control On Evap) |
| | 115/60/1 | 115/60/1 | 208-230/60/1 | 115/60/1 | 208-230/60/1 | ← Machine Voltage |

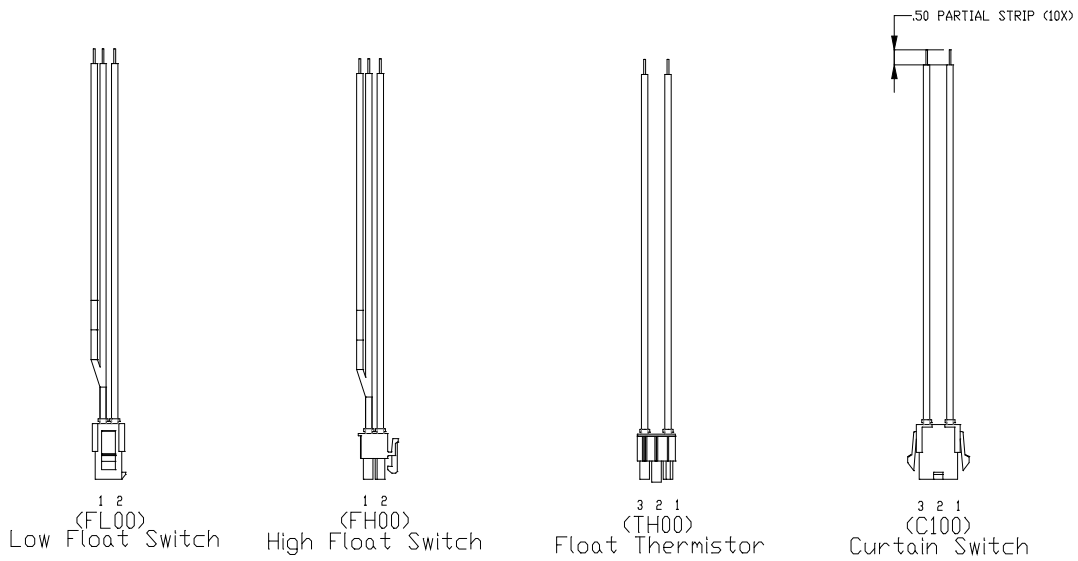
| Item No. | Model Number 220-240/50/1 | | | | | ← Machine Voltage |
|----------|---------------------------|--|-------------|-------------|-------------|---|
| | CIM0335A | | CIM0435A | CIM0535A | CIM0635A | |
| 1 | 9181165-101 | | 9181138-11A | 9181166-101 | 9181147-11A | Compressor Kit |
| 2 | 9181003-54 | | 9181003-32 | 9181003-32 | 9181003-54 | Start Capacitor |
| 3 | 9181009-26 | | 9181009-26 | 9181009-28 | 9181009-17 | Run Capacitor |
| 4 | 9181010-27 | | 9181010-32 | 9181010-34 | 9181010-01 | Compressor Relay |
| 5 | 9181005-50 | | 9181005-46 | 9181005-51 | Internal | Overload |
| 6 | 9041098-02 | | 9041098-02 | 9041098-02 | 9041098-02 | Switch, High Temp |
| 7 | 9101002-06 | | 9101002-06 | 9101002-06 | 9101002-06 | Contactora |
| 8 | 9021096-01 | | 9021096-01 | 9021096-01 | 9021096-01 | Cable Tie, Metal |
| 9 | 9041108-02 | | 9041108-02 | 9041108-02 | 9041108-02 | Valve, Water Inlet |
| 10 | 2062336-02 | | 2062336-02 | 2062336-02 | 2062336-02 | Water Pump |
| 11 | 9041105-05 | | 9041105-05 | 9041105-05 | 9041105-05 | Purge Valve |
| 12 | 9091140-01 | | 9091140-01 | 9091140-01 | 9091140-01 | Purge Drain |
| 13 | 1051224-01 | | 1051224-01 | 1051224-01 | 1051224-01 | Float Switch Assembly (Includes Instructions) |
| 13T | 9041112-01 | | 9041112-01 | 9041112-01 | 9041112-01 | Thermister in Float Housing |
| 14 | 9101368-02 | | 9101368-02 | 9101368-02 | 9101368-02 | Board Dual Voltage |
| 15 | 9051698-01P | | 9051698-01P | 9051698-01P | 9051698-01P | Plastic Standoff, Control Board (Pkg of 10) |
| 16 | 9161134-02 | | 9161134-02 | 9161134-02 | 9161134-02 | Harvest Assist |
| 17 | 9101394-01 | | 9101394-01 | 9101394-01 | 9101394-01 | Membrane Switch (ON-OFF) (Includes Cable) |
| 18 | 9101379-01 | | 9101379-01 | 9101379-01 | 9101379-01 | Switch, Magnetic Reed (Bin Control On Evap) |

Wiring harness service kits are now available to provide a specific connector to be replaced due to a damaged connector or wire.

| <u>Kit Part Number</u> | <u>Components Serviced</u> | <u>Voltage</u> |
|------------------------|---|----------------|
| 1051237-01 | Water Pump, Harvest Assist, Hot Gas Valv 115 or 230 | 115 or 230 |
| 1051237-02 | Low Float Switch, High Float Switch, Thermistor, Curtain Switch | 12 Volt D.C. |



KIT, WIRING HARNESS, LINE VOLTAGE
1051237-01



KIT, WIRING HARNESS, SIGNAL VOLTAGE
1051237-02

| Item | Part Number | Description |
|------|-------------|---|
| 1 | 2021747-02 | Deflector |
| 2 | 2061293-51 | Wire Assembly |
| 3 | 3013572-01 | Bin Stat Tube Bracket |
| 4 | 3033768-01 | Bin Stat Tube |
| 5 | 6021018-03 | Tubing PVC Insulation (For Bin Stat Cap Tube) |
| 6 | 9041097-01 | Bin Thermostat |
| 7 | 9101395-01 | Wiring Harness, Bin Stat (CIM Units) |

